



Sigma Xi: The Scientific Research Society

presents

Tanya Soule

IPFW Department of Biology

Microbial Sunscreens: Opportunities and Obstacles

Wednesday, October 24, 2012, 6:30-7:30 p.m.

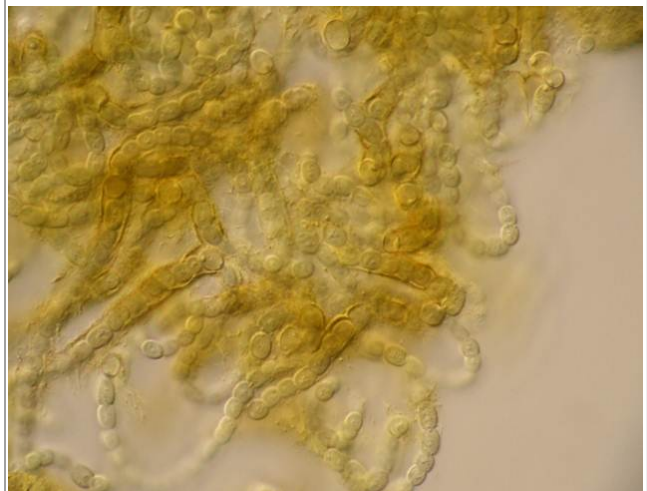
[Firefly Coffee House](#), 3523 North Anthony Blvd.

This topic will be presented in a

Science Café

format, as part of a series of events bringing science to the public in an informal setting.

Dr. Soule will give a brief presentation on her research in microbiology. The rest of the hour will be for questions and discussion.



The presentation is free and the public is specifically invited - no science background is assumed or required.

For more information, visit the web site of the IPFW Sigma Xi Chapter

<http://ipfw.edu/affiliates/sigmaxi/>