

# **2007-2008 STATISTICAL PROFILE**



**INDIANA UNIVERSITY - PURDUE UNIVERSITY FORT WAYNE**

Indiana University - Purdue University Fort Wayne  
Institutional Research

November, 2007

PREFACE

The Indiana University - Purdue University Fort Wayne Statistical Profile is intended to serve as a comprehensive resource about institutional facts and student characteristics. This is the twenty-fifth year of publication of the Statistical Profile.

Many people in various offices have contributed to the development of the information that is presented here. I want to express appreciation for all of their contributions.

Your comments and suggestions for improvement of future editions are always welcome.

Jack C. Dahl  
Institutional Research

## TABLE OF CONTENTS

INSTITUTIONAL INFORMATION .....	-1-
General Officers .....	-2-
Community Advisory Council .....	-3-
History of the Fort Wayne Campus .....	-4-
Notable Events .....	-6-
Undergraduate and Graduate Degree Programs .....	-10-
Organizational Chart .....	-12-
STUDENT INFORMATION .....	-13-
Summary of Enrollment by County .....	-14-
Allen County Student Residence .....	-16-
Enrollment by State of Residency .....	-17-
Enrollment by Foreign Country or Territory .....	-18-
Transfer Students* by Former Indiana College/university .....	-21-
Incoming Transfer* Student Summary by State .....	-23-
Profile of Enrollment .....	-24-
Enrollment by Class Standing .....	-25-
Enrollment by Level and Residency .....	-25-
Undergraduate Admissions and Matriculants .....	-26-
Class Rank and Test Scores of Beginners .....	-26-
Average Age by Student Level .....	-27-
Enrollment by Ethnic Category .....	-27-
Enrollment by Visa Status .....	-28-
Students by Academic Unit and Level .....	-29-
Students by Academic Unit, Major and Program .....	-30-
Summer Session Enrollment .....	-44-
Enrollment by Sex and Status .....	-45-
Enrollment History .....	-46-
Credit Hour History .....	-47-
Full-time Equivalent Enrollment .....	-48-
Continuing Education Enrollments .....	-49-
Certificates and Degrees Conferred .....	-50-
Residence of Alumni .....	-51-
FACULTY AND STAFF .....	-52-
Institutional Staff Data Comparison .....	-53-
Regular Minority Employees .....	-54-
Minority Employees by Ethnic Category .....	-54-
Regular Employees by Gender .....	-55-
Full-time Faculty Salaries by Rank .....	-55-
Sabbatical Leaves by Department/division .....	-56-
Tenured Faculty* by Department/division .....	-58-
Tenured Faculty* by Rank and Sex .....	-59-

SOURCES OF SUPPORT .....	-60-
General Funds Operating Budget .....	-61-
State Appropriation .....	-62-
Student Financial Aid by Type of Aid .....	-63-
Student Fees per Credit Hour .....	-64-
Sources and Major Distribution of Funds .....	-65-
Grants and Contracts by Funding Source .....	-65-
Sources of Gifts to IPFW .....	-66-
Summary of Gifts to IPFW .....	-66-
 FACILITIES .....	 -67-
Helmke Library Holdings .....	-68-
Capital Holdings .....	-69-

**PART I**  
**INSTITUTIONAL INFORMATION**

## **GENERAL OFFICERS**

Michael A. McRobbie, President, Indiana University

France A. Córdoba, President, Purdue University

Michael A. Wartell, Chancellor, Indiana University - Purdue University Fort Wayne

## **THE TRUSTEES**

### Indiana University

William R. Cast  
Philip N. Eskew, Jr.  
Stephen L. Ferguson  
Jack M. Gill  
Arthur D. (A.D.) King  
Thomas E. Reilly, Jr.  
Derica W. Rice  
Patrick A. Shoulders  
Sue H. Talbot

### Purdue University

Michael J. Birck  
JoAnne Brouillette  
Susan B. Butler  
John D. Hardin, Jr.  
Keith J. Krach  
J. Timothy McGinley  
William S. Oesterle  
Mamon M. Powers, Jr.  
Thomas Spurgeon  
Jill L. Steiner

## **INDIANA-PURDUE FOUNDATION AT FORT WAYNE**

### Indiana Directors

Kathryn D. Callen (2009)  
William R. Cast (2010)  
Harriet S. Inskip (2008)  
Edgar F. Kettler (2012)  
Jeanne S. Miller (2011)

### Purdue Directors

Bob F. Jesse (2012)  
Alfred W. Kettler, Jr. (2008)  
J. Timothy McGinley (2011)  
Edward L. Neuffer (2010)  
Mamon M. Powers, Jr. (2009)

### Foundation Directors - Public Members

Betsy Chapman (2010)  
David P. Molfenter (2011)  
Helen Murray (2008)  
Glenn Rossman (2012)  
Paul E. Shaffer (2009)

**COMMUNITY ADVISORY COUNCIL  
INDIANA UNIVERSITY - PURDUE UNIVERSITY FORT WAYNE  
2007-08**

JoAnn Brouillette

William R. Cast

Bob F. Jesse

M. James Johnston

Pamela M. Kelly, MD

Don McArdle

Eleanor Marine

David P. Molfenter

Paul E. Shaffer

# HISTORY OF THE FORT WAYNE CAMPUS

## INDIANA UNIVERSITY

### Deans and Directors of the Fort Wayne Campus

Frank W. Shockley	1917
Floyd R. Neff	1917-1951
Ralph E. Broyles	1951-1974
(Title of Chancellor for IU Regional Campus 1970 - 1974)	

### Locations of the Fort Wayne Campus

- 1917 - Administrative offices - 3rd floor of Allen County courthouse; Evening classes - Central High School
- 1925 - Administrative offices - Central Building, 114 West Wayne Street
- 1930 - Administrative offices - Dime Bank Building; daytime classes - YWCA
- 1939 - Luther Institute Building purchased; offices and classrooms at 1120 South Barr Street
- 1964 - 2101 East Coliseum Boulevard (shared with Purdue University)

## PURDUE UNIVERSITY

### Deans and Directors of the Fort Wayne Campus

Conwell Poling	1942-47
Richard M. Bateman	1947-60
Robert L. Ewigleben	1960-65
D. Richard Smith	1965-70
Lawrence O. Nelson	1970 (interim)
Roger J. Manges	1970-74

### Locations of the Fort Wayne Campus

- 1941 - Central Building, 114 West Wayne Street
- 1946 - Transfer Building, Main and Calhoun Streets
- 1947 - Catholic Community Center Building, Jefferson and Barr Streets
- 1964 - 2101 East Coliseum Boulevard (shared with Indiana University)

## INDIANA UNIVERSITY - PURDUE UNIVERSITY FORT WAYNE

In July, 1974, Indiana University at Fort Wayne and Purdue University at Fort Wayne merged under one chancellor.

### Chancellors of the Fort Wayne Campus

Donald Schwartz	1974-78	Edward A. Nicholson, Jr.	1984-86 (acting)
Frances T. Borkowski	Summer 1978 (acting)	Thomas P. Wallace	1986-88
Dwight F. Henderson	1978-79 (acting)	Joanne B. Lantz	1988-94
Joseph P. Giusti	1979-84	Michael A. Wartell	1994-



# HISTORY OF THE FORT WAYNE CAMPUS, continued

## Major Construction Projects

<b>ALFRED W. KETTLER HALL</b>		<b>PARKING GARAGE #1</b>	
Groundbreaking	10-18-62	Construction Began	6-12-90
Cornerstone Laying	9-17-63	Building Completed	2-26-91
Building Completed	1964		
Dedicated	11-8-64	<b>ENGINEERING, TECHNOLOGY, and COMPUTER SCIENCE BUILDING</b>	
Named	5-15-73	Construction Began	2-6-91
		Building Completed	11-16-92
<b>FLOYD R. NEFF HALL</b>		Dedicated	9-21-93
Groundbreaking	5-11-70	Name change from Engineering and Technology	
Building Completed	1972	Building	4-23-04
Dedicated & Named	5-15-73		
		<b>ERNEST E. WILLIAMS THEATRE</b>	
<b>WALTER E. HELMKE LIBRARY</b>		Construction Began	5-28-91
Groundbreaking	11-2-70	Building Completed	10-26-92
Building Completed	1972	Dedicated & Named	4-16-93
Dedicated	5-15-73		
Named	9-20-77	<b>SCIENCE BUILDING</b>	
		Groundbreaking	5-8-96
<b>WALTER W. WALB STUDENT UNION</b>		Building Completed	2-27-98
Groundbreaking	5-11-70	Dedicated	9-15-98
Building Completed	1973		
Dedicated & Named	9-20-77	<b>PARKING GARAGE #2</b>	
		Construction Began	5-27-97
<b>CLASSROOM - MEDICAL BUILDING</b>		Building Completed	6-25-98
Groundbreaking	12-13-79		
Building Completed	1981	<b>WILLIS FAMILY BRIDGE</b>	
Dedicated	5-12-82	Groundbreaking	10-10-02
		Completed	2003
<b>HILLIARD GATES SPORTS CENTER</b>		Dedicated & Named	9-16-03
Groundbreaking	5-12-80		
Building Completed	1981	<b>STUDENT HOUSING</b>	
Dedicated	5-12-82	Phase 1	
Rededicated & Named	10-11-92	Groundbreaking	5-28-03
		Completed	August 2004
<b>LIFE SCIENCES RESOURCE CENTER</b>		Dedicated & Named	9-21-04
Construction Began	11-85	Phase 2	
Building Completed	1986	Groundbreaking	6-26-06
Dedicated	9-16-86	Completed	2007
		<b>JOHN AND RUTH RHINEHART MUSIC CENTER</b>	
<b>VISUAL ARTS BUILDING</b>		Groundbreaking	11-1-05
Construction Began	11-17-89	Completed	2007
Building Completed	5-31-91	Dedicated and Named	10-4-07
Dedicated	9-15-92		
Name changed from		<b>MEDICAL EDUCATION BUILDING</b>	
Fine Arts Building	3-3-00	Groundbreaking	10-2-07
<b>PRINTING SERVICES AND WAREHOUSE BUILDING</b>			
Construction Began	3-19-90		
Building Completed	12-14-90		

## **NOTABLE EVENTS**

- 6-4-58 Indiana-Purdue Foundation at Fort Wayne established.
- 11-29-58 Purchase of the original tract for the campus.
- 9-17-64 First combined Indiana University and Purdue University classes at Coliseum Boulevard site.
- 1966 General and Technical Studies Division established (programs integrated into other units in 1982).
- 1968 First degrees conferred.
- 1974 Administrative unification of Indiana University at Fort Wayne and Purdue University at Fort Wayne under one chancellor.
- 1975 Crooked Lake Biological Station lease acquired.
- 1976 Fine Arts School on Berry Street merged with Indiana University - Purdue University at Fort Wayne.
- 1978 Weekend College initiated.
- 1981 Faculty Senates of Indiana University - Purdue University Fort Wayne combined.
- 1983 Library Endowment established as the first major endowment at the university.
- 1985 Purdue University designated responsible corporation for campus management purposes.
- 1986 First named professorship established (Jack W. Schrey Professorship).
- 1987 Academic units reorganized to reflect homogeneous missions.
- 1988 152-acre William T. McKay property adjacent to the campus acquired for the Indiana-Purdue Foundation at Fort Wayne.
- 1989 IPFW 25th Anniversary celebrated.
- Parkview Hospital Nursing Program merger with IPFW completed.
- 1990 Fort Wayne Center for Medical Education approved to offer second year of medical school curriculum.
- 1991 IPFW established first baccalaureate program in women's studies in Indiana.
- Downtown Fine Arts facilities consolidated at Coliseum Boulevard campus.

continued on following page

## **NOTABLE EVENTS, continued**

- 1992 Friends of Indiana University - Purdue University Fort Wayne pavilion erected in Aquarius Park.
- First major building (Kettler Hall) mortgage paid off.
- Indiana University - Purdue University at Fort Wayne changed to Indiana University - Purdue University Fort Wayne in 1992.
- 1993 Theatre Arts Building dedicated on April 16 and named for Ernest E. Williams, the late editor of The News-Sentinel from 1966 to 1982.
- Men's basketball team won the Great Lakes Valley Conference championship and an NCAA postseason berth.
- 1994 IPFW Volleydons hosted the NCAA Final Four.
- Joanne B. Lantz Student Scholarship Endowment established.
- 1995 General education program implemented for all baccalaureate programs.
- Omnibus Lecture Series initiated.
- 1996 IPFW received \$ 1.7 million scholarship gift from estate of Carlisle and Georgia Wilbur
- Collegiate Connections Program initiated
- 1998 Science Building dedicated on September 15. Greenhouse named for H. William Davies, Ph.D., Professor Emeritus of Biology.
- IPFW sponsored the first all-campus Undergraduate Research and Creative Endeavor Symposium.
- The "Plex" opened on the McKay farm to provide indoor soccer facilities in support of the Youth Education through Sports initiative.
- 1999 CELT, the Center for the Enhancement of Learning and Teaching, began providing a wide range of programs to improve instruction and promote the use of technology in teaching.
- 2000 The SCAN Children's Garden opened on campus to recognize individuals who have helped children become adults.

continued on following page

## **NOTABLE EVENTS, continued**

- (2000) The Helmke Library campaign concluded with the opening of the Science Information Center and an Electronic Information Training Center, as well as an expanded endowment to support enhanced services.
- 'OASIS' was implemented to provide web-based access to a wide range of enrollment services including admission, registration, and fee payment.
- 2001 The IPFW/Parkview Health and Wellness Clinic opened on the campus.
- Centers of Excellence were established to promote faculty research and service to the region.
- The Athletics program began the transition to Division I affiliation.
- 2002 The Chapman Professor of English was established as IPFW's first endowed professorship.
- The Fort Wayne Public Television Center opened on land leased from IPFW.
- The SCT Banner student information system was implemented, providing a wide variety of new services for students, faculty, and staff.
- The Management and Academic Mission Agreement was renewed by IU and Purdue trustees for the period July 1, 2003 to July 1, 2008.
- 2003 The Willis Family Bridge connecting the campus to Student Housing on the Waterfield Campus was completed and dedicated.
- The *Discover IPFW* capital campaign was announced with a goal of raising \$20 million.
- 2004 The Waterfield Campus Student Housing complex opened for Fall 2004 and was dedicated.
- The IPFW Warsaw Center grand opening was held on December 2, 2003.
- The Dolnick Learning Center, on the grounds of the State Developmental Center, became a site for IPFW and Ivy Tech - Fort Wayne classes.
- A bronze mastodon was installed and dedicated.
- The First Year Experience Program was established to coordinate services for students and improve student retention.
- An IPFW license plate program was approved.

continued on following page

## **NOTABLE EVENTS, continued**

- 2005      The Northeast Indiana Innovation Center opened on IPFW grounds north of the main campus.
- Three endowed chair positions were established: the Shaffer Chair of Finance, the Steel Dynamics Chair of Engineering, and the Systems Engineering Chair.
- The “Last Stampede” and Gala concluded the Mastodons on Parade program, which was the highlight event of IPFW’s 40<sup>th</sup> Anniversary Celebration. The Gala auction raised \$200,000 for United Way.
- 2006      The Richard T. Doermer School of Business and Management Sciences became IPFW’s first named school.
- IPFW athletic’s programs accepted an invitation to join the Mid-Continent Conference. The conference became The Summit League on June 1, 2007.
- A Japanese Saturday School opened on campus as a collaboration between IPFW and the Fort Wayne-Allen County Economic Development Alliance.
- 2007      The *Discover IPFW* capital campaign concluded with \$43 million in support for IPFW, which was more than twice the original goal.
- The John and Ruth Rhinehart Music Center opened.
- A groundbreaking ceremony was held for the IPFW Holiday Inn at the Coliseum.
- Chancellor Wartell was honored with a Sagamore of the Wabash Award from the Governor’s office.

## **UNDERGRADUATE AND GRADUATE DEGREE PROGRAMS\***

### **ARTS AND SCIENCES**

#### *Undergraduate Programs*

Anthropology, B.A.  
Biology, A.A., B.S.  
Biology Teaching, B.S.  
Chemical Methods, A.S.  
Chemistry, B.S., B.S.C.  
Chemistry Teaching, B.S.  
Computer Science, B.A (Mathematical Sciences).  
Economics, B.A. (Political Science)  
English, A.A., B.A.  
French, A.A., B.A.  
Geology, B.A., B.S.  
German, A.A., B.A.  
History, A.A., B.A.  
Interpersonal and Organizational Communication, B.A.  
Mathematics, A.A., B.S.  
Mathematics Teaching, B.S.  
Media and Public Communication, B.A.  
Medical Technology, B.S.  
Philosophy, B.A.  
Physics, B.S.  
Physics Teaching, B.S.  
Political Science, A.A., B.A.  
Psychology, A.A., B.A.  
Sociology, B.A.  
Spanish, A.A., B.A.  
Speech and Hearing Therapy, B.S.  
Women's Studies, A.A., B.A.

#### *Graduate Programs*

Biological Science, M.S.  
English, M.A, M.A.T.  
Liberal Studies, M.L.S.  
Mathematics, M.S.  
Professional Communication Studies, M.A., M.S.  
Sociological Practice, M.A.  
Speech Language Pathology, M.A.

### **BUSINESS AND MANAGEMENT SCIENCES**

#### *Undergraduate Programs*

Business, A.S.B., B.S.B.

#### *Graduate Program*

Business Administration, M.B.A.

### **CONTINUING STUDIES**

#### *Undergraduate Programs*

General Studies, A.A.G.S., B.G.S.

### **EDUCATION**

#### *Undergraduate Programs*

Early Childhood Education, A.S.  
Elementary Education, B.S.Ed.  
    Early Childhood  
    Middle Childhood  
Secondary Education, B.S.Ed.  
    Adolescence/Young Adulthood  
    Earth Space Science Education  
    English Education  
    French Education  
    German Education  
    Social Studies Education  
    Spanish Education  
    Early Adolescence

#### *Graduate Programs*

Counseling, M.S.Ed.  
Educational Leadership, M.S.Ed.  
Elementary Education, M.S.Ed.  
Secondary Education, M.S.Ed.  
Special Education, M.S.Ed.

continued on following page

## **UNDERGRADUATE AND GRADUATE DEGREE PROGRAMS, continued**

### **ENGINEERING, TECHNOLOGY, AND COMPUTER SCIENCE**

#### *Undergraduate Programs*

Architectural Engineering Technology, A.S.  
Civil Engineering, B.S.C.E.  
Civil Engineering Technology, A.S.  
Computer Engineering, B.S.Cp.E.  
Computer Engineering Technology, B.S.  
Computer Science, A.S., B.S.  
Construction Engineering Technology, B.S.  
Electrical Engineering, B.S.E.E.  
Electrical Engineering Technology, A.S., B.S.  
Industrial Engineering Technology, A.S., B.S.  
Information Systems, A.S., B.S.  
Interior Design, A.S., B.S.  
Mechanical Engineering, B.S.M.E.  
Mechanical Engineering Technology, A.S., B.S.

#### *Graduate Program*

Applied Computer Science, M.S.  
Engineering, M.S.E.  
Technology, M.S.

### **HEALTH AND HUMAN SERVICES**

#### *Undergraduate Programs*

Dental Hygiene, A.S.  
Dental Laboratory Technology, A.S.  
Hotel, Restaurant, & Tourism Management, A.S.  
Hospitality Management, B.S.  
Human Services, B.S.  
Nursing, A.S., B.S.  
Radiography, A.S.

#### *Graduate Program*

Nursing Administration, M.S.

### **LABOR STUDIES**

#### *Undergraduate Programs*

Labor Studies, A.S., B.S.

### **ORGANIZATIONAL LEADERSHIP AND SUPERVISION**

#### *Undergraduate Programs*

Organizational Leadership and  
Supervision, A.S., B.S.

#### *Graduate Program*

Organizational Leadership and  
Supervision, M.S.

### **PUBLIC AND ENVIRONMENTAL AFFAIRS**

#### *Undergraduate Program*

Public Affairs, B.S.P.A.

#### *Graduate Programs*

Public Affairs, M.P.A.  
Public Management, M.P.M.

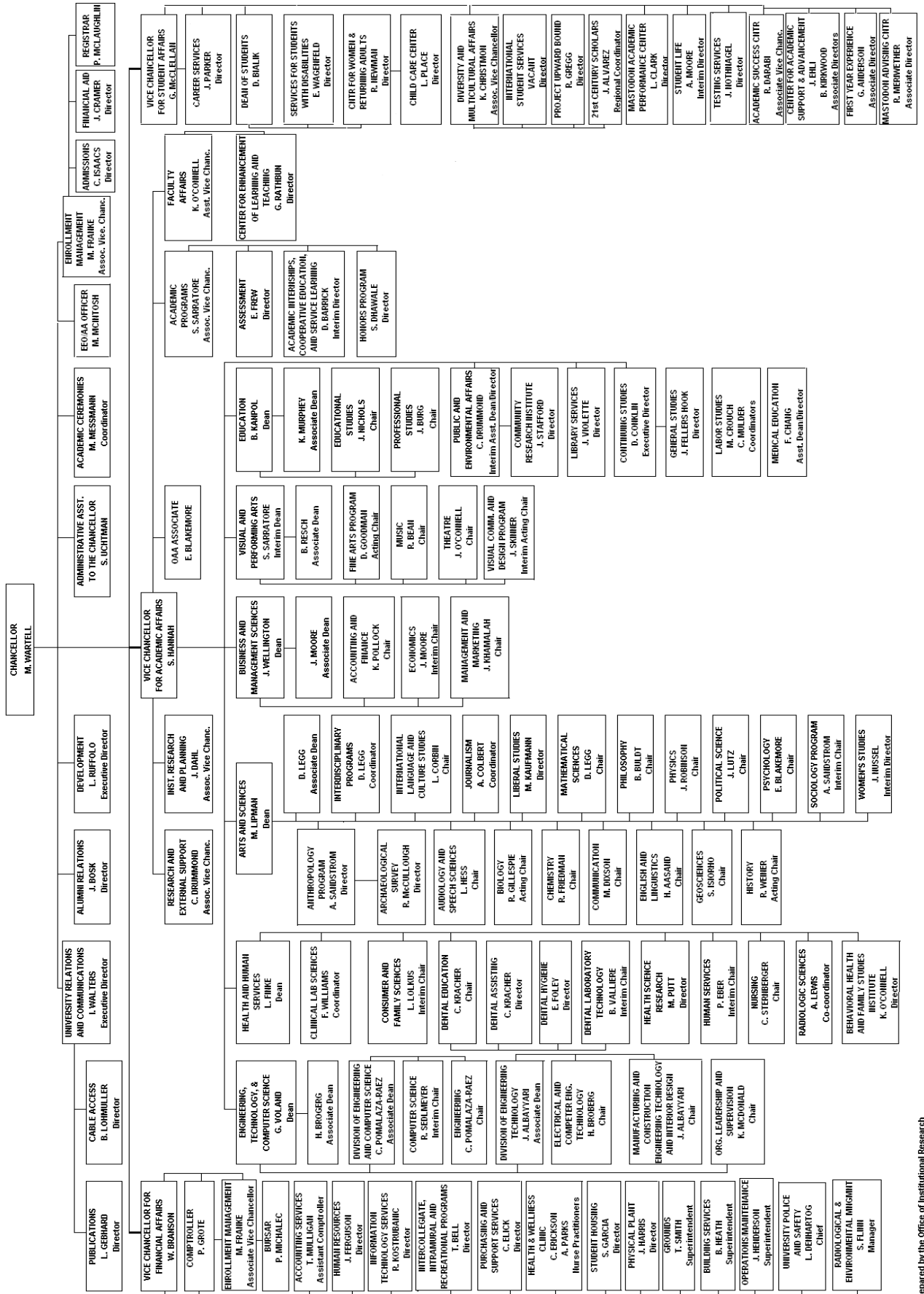
### **VISUAL AND PERFORMING ARTS**

#### *Undergraduate Programs*

Art Education, B.A.  
Commercial Art, A.S.  
Fine Arts, B.A., B.F.A.  
Music, B.Mus., B.S.  
Music Education, B.Mus.Ed.  
Music Therapy, B.S.  
Theatre, B.A.

\*Degree programs which may be completed at IPFW. Transfer and certificate programs are excluded from this listing. Some degree programs also offer specialization areas not shown in this listing.

**INDIANA UNIVERSITY - PURDUE UNIVERSITY FORT WAYNE  
ORGANIZATIONAL CHART 2007-08**



Prepared by the Office of Institutional Research



**PART II**  
**STUDENT INFORMATION**

**TABLE 1**  
**SUMMARY OF ENROLLMENT BY COUNTY**  
**FALL SEMESTERS 2003 - 2007**

<u>County</u>	<u>2003</u>	<u>2004</u>	<u>2005</u>	<u>2006</u>	<u>2007</u>
Unknown	0	0	0	0	0
Adams	465	425	404	348	381
Allen	6,693	6,765	6,547	6,503	6,425
Bartholomew	1	4	2	2	1
Benton	0	1	4	0	1
Blackford	12	14	17	14	17
Boone	2	2	5	7	7
Brown	0	0	0	0	0
Carroll	2	3	2	4	1
Cass	11	21	24	26	26
Clark	0	2	1	3	3
Clay	1	1	2	1	0
Clinton	0	3	1	5	6
Crawford	0	0	2	1	1
Daviess	1	1	0	0	1
Dearborn	0	0	0	0	1
Decatur	0	0	0	0	2
DeKalb	605	557	557	560	556
Delaware	26	29	26	30	31
Dubois	1	2	2	3	4
Elkhart	47	66	92	143	178
Fayette	2	1	2	4	2
Floyd	1	2	4	3	2
Fountain	0	0	0	0	0
Franklin	0	0	0	0	0
Fulton	25	28	32	30	45
Gibson	0	0	0	0	0
Grant	54	65	64	101	114
Greene	2	1	0	0	0
Hamilton	9	14	16	18	16
Hancock	2	1	1	2	1
Harrison	0	1	1	0	0
Hendricks	3	2	7	5	2
Henry	1	3	5	7	3
Howard	5	8	13	25	25
Huntington	468	428	399	376	397
Jackson	1	0	0	1	0
Jasper	2	0	0	1	3
Jay	19	14	24	28	34
Jefferson	0	0	1	1	1
Jennings	2	0	2	2	2
Johnson	5	1	4	3	5
Knox	1	2	3	1	1
Kosciusko	466	455	498	476	568
LaGrange	133	123	144	146	150

Table 1 continued on following page

**TABLE 1**  
**SUMMARY OF ENROLLMENT BY COUNTY, continued**  
**FALL SEMESTERS 2003 - 2007**

<u>County</u>	<u>2003</u>	<u>2004</u>	<u>2005</u>	<u>2006</u>	<u>2007</u>
Lake	26	27	35	34	62
LaPorte	3	4	15	16	14
Lawrence	0	0	0	0	0
Madison	9	11	9	9	12
Marion	24	34	37	39	39
Marshall	22	20	27	44	51
Miami	29	24	31	37	44
Monroe	14	14	15	10	14
Montgomery	0	5	3	3	0
Morgan	0	2	4	2	5
Newton	0	0	0	0	0
Noble	524	506	530	499	530
Ohio	0	0	0	0	0
Orange	0	0	1	1	0
Owen	1	1	1	0	1
Parke	0	1	1	1	1
Perry	0	1	3	2	1
Pike	0	1	1	1	1
Porter	6	15	21	16	24
Posey	1	2	1	0	0
Pulaski	4	3	2	3	3
Putnam	0	1	1	1	2
Randolph	3	5	6	9	7
Ripley	0	3	0	0	1
Rush	0	0	1	3	1
Scott	0	0	0	0	0
Shelby	0	0	1	2	2
Spencer	1	2	2	2	1
St. Joseph	21	40	41	44	49
Starke	1	3	4	6	8
Steuben	301	282	269	283	278
Sullivan	1	0	0	0	0
Tippecanoe	10	16	18	17	21
Tipton	0	0	3	4	3
Union	0	0	1	0	0
Vanderburg	1	1	2	1	1
Vigo	6	6	2	4	6
Wabash	170	200	198	193	208
Warren	0	0	0	0	0
Warrick	2	2	2	2	2
Washington	0	0	1	1	1
Wayne	7	5	7	7	5
Wells	383	368	368	313	315
White	4	4	2	6	7
Whitley	<u>488</u>	<u>495</u>	<u>489</u>	<u>428</u>	<u>419</u>
TOTAL	11,130	11,149	11,063	10,923	11,152

**TABLE 2**  
**ALLEN COUNTY STUDENT RESIDENCE**  
**FALL SEMESTER 2007**

<u>Zip Code</u>	<u>Count</u>	<u>Percentage</u>
46801/2	199	2.7%
46803	68	0.9%
46804	605	8.3%
46805	518	7.1%
46806	183	2.5%
46807	277	3.8%
46808	334	4.6%
46809	120	1.7%
46814	207	2.9%
46815	744	10.3%
46816	236	3.3%
46818	320	4.4%
46819	145	2.0%
46825	770	10.6%
46835	1,086	15.0%
46845	519	7.2%
Others with less than 1% (46800-99)	<u>39</u>	<u>0.5%</u>
Total Fort Wayne area	6,370	87.8%

<u>Outlying Areas</u>	<u>Zip code</u>	<u>Count</u>	<u>Percentage</u>
Arcola	46704	3	0.0%
Grabill	46741	55	0.8%
Harlan	46743	48	0.7%
Hoagland	46745	48	0.7%
Huntertown	46748	104	1.4%
Leo	46765	115	1.6%
Monroeville	46773	83	1.1%
New Haven	46774	335	4.6%
Woodburn	46797	68	0.9%
Yoder	46798	<u>23</u>	<u>0.3%</u>
Total Outlying Areas		882	12.2%
TOTAL ALLEN COUNTY		7,252	100.0%

Note: Residence reported by address zip code at time of enrollment, not time of admission.

**TABLE 3**  
**ENROLLMENT BY STATE OF RESIDENCY**  
**FALL SEMESTERS, 2003 - 2007**

<u>State or Territory</u>	<u>2003</u>	<u>2004</u>	<u>2005</u>	<u>2006</u>	<u>2007</u>
Alabama	1	1	3	3	0
Alaska	4	2	2	2	2
Arizona	4	2	6	5	5
Arkansas	0	1	0	1	1
California	16	15	18	17	21
Colorado	3	5	6	8	6
Connecticut	1	1	3	1	2
Delaware	0	1	1	1	2
Dist of Columbia	0	0	0	0	1
Florida	11	13	15	17	16
Georgia	5	8	7	5	7
Hawaii	0	1	0	1	1
Idaho	0	1	0	0	1
Illinois	24	34	37	35	38
Indiana	11,130	11,149	11,063	10,923	11,152
Iowa	2	2	3	3	3
Kansas	2	4	3	1	2
Kentucky	15	11	10	7	12
Louisiana	1	1	1	2	2
Maine	0	0	0	1	1
Maryland	1	2	3	3	4
Massachusetts	6	9	12	10	8
Michigan	65	63	72	68	84
Minnesota	6	4	5	6	5
Mississippi	0	1	1	2	0
Missouri	3	6	8	11	8
Montana	0	1	1	0	1
Nebraska	2	2	1	1	4
Nevada	1	1	1	1	0
New Hampshire	0	1	1	1	0
New Jersey	0	1	1	5	6
New Mexico	1	2	2	0	1
New York	9	15	9	11	15
North Carolina	5	3	5	0	0
North Dakota	1	0	0	1	1
Ohio	139	149	182	212	216
Oklahoma	4	2	6	2	2
Oregon	1	2	1	3	4
Pennsylvania	8	6	6	6	10
Rhode Island	0	1	1	1	0
South Carolina	1	2	1	1	0
South Dakota	3	3	2	2	2
Tennessee	5	7	6	6	7
Texas	12	12	13	12	13
Utah	2	5	3	2	3
Vermont	2	0	0	0	0
Virginia	4	4	6	8	10
Washington	2	3	1	3	3
West Virginia	2	2	1	1	2
Wisconsin	13	11	6	5	6
Wyoming	1	1	1	2	1
Unknown	0	0	0	0	0
Foreign Countries	<u>288</u>	<u>237</u>	<u>259</u>	<u>253</u>	<u>252</u>
TOTAL	11,806	11,810	11,795	11,672	11,943

**TABLE 4**  
**ENROLLMENT BY FOREIGN COUNTRY OR TERRITORY**  
**FALL SEMESTERS, 2003-2007**

<u>Foreign Country or Territory</u>	<u>2003</u>	<u>2004</u>	<u>2005</u>	<u>2006</u>	<u>2007</u>
Afghanistan	1	2	2	2	0
Albania	0	0	1	1	0
Algeria	1	0	0	0	0
Angola	34	32	20	11	12
Argentina	1	1	1	0	0
Australia	1	2	1	2	1
Bahamas	0	0	1	2	2
Bahrain	1	1	0	0	1
Bangladesh	11	10	10	10	9
Barbados	0	0	0	1	1
Belgium	1	1	1	1	0
Bolivia	0	0	0	0	0
Bosnia & Herzegovin	0	0	0	0	1
Brazil	3	7	8	9	12
British Indian Ocean	0	0	0	0	0
Bulgaria	7	8	5	4	1
Cameroon	1	2	2	2	2
Canada	13	9	18	19	19
Cayman Islands	0	1	0	0	0
Chad	1	1	0	1	1
Chile	1	1	0	0	0
China, People's Republic of	12	8	6	6	6
Colombia	0	0	0	1	1
Congo (formerly Zaire)	1	2	1	1	1
Costa Rica	0	0	0	0	0
Croatia, Republic of	0	1	1	1	1
Cuba	1	1	1	0	0
Cyprus	0	1	1	1	1
Czech Republic	5	4	3	4	4
Dominican Republic	1	0	2	0	0
Ecuador	1	2	1	0	0
Egypt	1	1	1	0	0
El Salvador	2	0	0	0	0
Ethiopia	7	5	8	7	6
Finland	1	0	1	1	0
France	1	2	1	2	2
Gambia	2	1	1	1	1
Germany	1	1	3	3	4
Ghana	3	3	4	4	1
Greece	0	0	0	0	0
Guatemala	0	0	0	1	1
Haiti	3	1	2	2	2
Honduras	1	2	1	0	1
Hong Kong	1	2	1	1	0
India	28	16	23	21	22
Indonesia	2	1	3	2	1
Iran	2	1	2	1	1
Iraq	1	0	0	1	0

table continued on next page

**TABLE 4**  
**ENROLLMENT BY FOREIGN COUNTRY OR TERRITORY**  
**FALL SEMESTERS, 2003-2007, continued**

<u>Foreign Country or Territory</u>	<u>2003</u>	<u>2004</u>	<u>2005</u>	<u>2006</u>	<u>2007</u>
Ireland	1	1	2	2	2
Israel	1	0	1	1	1
Italy	0	0	0	0	1
Jamaica	2	0	1	1	3
Japan	1	1	1	3	3
Jordan	2	3	1	3	3
Kazakstan	0	0	1	0	0
Kenya	12	13	8	10	17
Korea, Democratic Republic of	0	0	0	0	2
Korea, Republic of	1	0	3	5	4
Kuwait	0	0	0	0	0
Laos	2	0	1	1	1
Macau	0	0	0	1	1
Macedonia, The Former Yugoslav	0	0	0	0	2
Malawi	0	0	1	1	0
Malaysia	1	2	3	2	2
Mauritius	1	0	0	0	0
Mexico	10	4	7	9	10
Moldova	0	0	0	0	0
Morocco	1	0	0	0	0
Myanmar (formerly Burma)	15	9	12	8	7
Namibia	0	0	0	1	1
Nepal	0	0	1	2	4
Netherlands	1	1	1	1	1
Nicaragua	0	0	0	0	0
Nigeria	6	5	7	10	11
Norway	0	0	1	1	1
Pakistan	10	8	4	3	3
Panama	0	0	1	1	1
Peru	2	2	2	2	0
Philippine Islands	5	4	6	6	4
Poland	3	3	3	2	1
Portugal	1	0	0	0	0
Puerto Rico	1	5	2	3	4
Romania	4	3	3	1	1
Russian Federation	8	3	4	1	1
Saint Kitts and Nevis	0	0	2	2	1
Saudi Arabia	1	1	0	0	0
Singapore	0	0	1	1	2
Slovakia	1	1	0	0	0
South Africa	0	1	0	0	0
Spain	3	1	0	1	0
Sri Lanka	2	2	1	1	2
St. Lucia	0	0	0	0	0

table continued on next page

**TABLE 4**  
**ENROLLMENT BY FOREIGN COUNTRY OR TERRITORY**  
**FALL SEMESTERS, 2003-2007, continued**

<u>Foreign Country or Territory</u>	<u>2003</u>	<u>2004</u>	<u>2005</u>	<u>2006</u>	<u>2007</u>
Sudan	2	2	2	2	2
Sweden	0	1	1	1	1
Switzerland	0	0	0	0	0
Syrian Arab Republic	4	3	2	1	1
Taiwan	2	2	2	2	2
Tajikistan	0	0	0	1	1
Tanzania	0	0	0	0	0
Thailand	3	2	3	1	1
Tunisia	0	1	0	0	0
Turkey	2	1	1	1	0
Ukraine	0	0	1	2	1
United Arab Emirates	0	0	0	0	1
United Kingdom	4	6	9	7	9
Uzbekistan	1	0	0	0	0
Venezuela	2	3	4	4	3
Vietnam	10	5	11	11	10
Yemen	1	0	1	1	1
Yugoslavia	5	4	2	4	2
Zambia	0	0	0	0	1
Zimbabwe	<u>0</u>	<u>1</u>	<u>2</u>	<u>3</u>	<u>1</u>
TOTAL	288	237	259	253	252



**TABLE 5**  
**INCOMING TRANSFER STUDENTS\* BY FORMER**  
**INDIANA COLLEGE/UNIVERSITY**  
**FALL SEMESTERS, 2003- 2007**

<u>Institution</u>	<u>2003</u>	<u>2004</u>	<u>2005</u>	<u>2006</u>	<u>2007</u>
Ancilla College	2	2	2	2	1
Anderson University	3	6	4	6	2
Ball State University	71	63	46	29	45
Bethel College	0	2	5	1	4
Butler University	3	2	1	3	2
Calumet College of St. Joseph	2	1	0	0	0
Davenport College-South Bend	0	0	0	0	0
DePauw University	0	0	0	2	0
Earlham College	0	0	0	0	0
Franklin College of Indiana	1	0	0	1	0
Goshen College	1	6	2	0	1
Grace College	7	7	7	8	9
Hanover College	0	1	0	0	1
Holy Cross College	2	0	3	1	0
Huntington College	8	9	7	9	12
Hyles-Anderson College	0	0	0	0	1
Indiana Bible College	0	0	0	0	0
Indiana Business College	2	1	1	3	3
Indiana Institute of Technology	14	10	12	5	11
Indiana State University-Terre Haute	12	9	5	4	6
Indiana University-Bloomington	67	70	60	54	50
Indiana University-East	2	7	5	1	0
Indiana University-Kokomo	9	2	9	5	8
Indiana University-Northwest	3	3	1	1	3
Indiana University-South Bend	13	11	13	10	13
Indiana University-Southeast	0	1	3	1	1
Indiana U.-Purdue U. Fort Wayne	80	63	72	45	36
Indiana U.-Purdue U. Indianapolis	10	24	23	22	23
Indiana U.-Purdue U. Indianapolis - Columbus	0	0	0	0	1
Indiana Wesleyan University	13	5	7	4	9
International Business College	15	10	9	3	9
ITT Technical Institute-Fort Wayne	9	8	9	6	13
ITT Technical Inst.-Indianapolis	0	0	1	0	0
Ivy Tech State College (historical)	0	2	5	2	1
Ivy Tech State College (by region and city)					
1 Northwest (East Chicago, Gary, Michigan City,	0	1	0	1	0
2 North Central (Elkhart, South Bend, Warsaw)	9	9	6	12	9
3 Northeast (Fort Wayne)	166	142	137	125	154
4 Lafayette (Lafayette)	1	2	0	2	2
5 Kokomo (Kokomo, Logansport)	4	1	4	3	6
6 East Central (Anderson, Marion, Muncie)	9	6	12	6	13
7 Wabash Valley (Terre Haute)	0	0	2	0	0
8 Central Indiana (Indianapolis)	0	0	0	0	0

Table 5 continued on next page

**TABLE 5**  
**INCOMING TRANSFER STUDENTS\* BY FORMER**  
**INDIANA COLLEGE/UNIVERSITY**  
**FALL SEMESTERS, 2003 - 2007, continued**

<u>Institution</u>	<u>2003</u>	<u>2004</u>	<u>2005</u>	<u>2006</u>	<u>2007</u>
<i>Ivy Tech State College (by region and city)</i>					
9 Whitewater (Richmond)	0	0	0	0	0
10 Columbus	0	0	0	0	1
11 Southeast (Madison, Lawrenceburg)	0	1	0	0	0
12 Southwest (Evansville)	0	0	0	0	0
13 South Central (Sellersburg)	0	0	0	1	0
14 Bloomington (Bloomington)	0	0	2	0	1
Lincoln Technical Institute	1	0	0	0	2
Lutheran College of Health Prof.	0	0	0	0	0
Manchester College	13	20	9	10	6
Marian College	0	2	3	0	1
Michiana/Brown Mackie College	11	9	5	9	9
Oakland City College	2	0	0	1	1
Purdue University-Calumet	3	6	2	1	4
Purdue University-North Central	7	4	5	6	5
Purdue University-West Lafayette	64	43	35	46	30
Rose Hulman Institute of Tech.	1	2	0	0	1
Rudae's School of Beauty	0	0	0	0	1
Sawyer College	0	0	0	0	0
St. Elizabeth Hospital	0	0	0	0	0
St. Joseph's College	1	2	2	0	3
St. Joseph's Hospital Sch. of Nursing	0	0	0	0	1
St. Mary's College	1	0	1	1	0
St. Mary of the Woods College	0	0	0	2	0
Taylor University-Upland	1	0	1	2	0
Taylor University-Fort Wayne	12	14	6	8	7
Tri-State University	20	18	10	7	12
Tri-State University-Fort Wayne	0	0	0	0	0
Tucker Area Voc-Tech Ctr.	0	0	0	0	0
University of Evansville	1	0	1	1	1
University of Indianapolis	1	2	4	5	5
University of Notre Dame	0	0	0	0	3
University of St. Francis	35	31	31	37	24
University of Southern Indiana	5	6	4	9	9
Valparaiso University	2	0	1	2	2
Vincennes University	15	17	8	6	10
Wabash College	<u>2</u>	<u>0</u>	<u>0</u>	<u>1</u>	<u>0</u>
TOTAL	736	663	603	532	588

**TABLE 6**  
**INCOMING TRANSFER\* STUDENT SUMMARY BY STATE**  
**FALL SEMESTERS, 2003 - 2007**

<u>State or Territory</u>	<u>2003</u>	<u>2004</u>	<u>2005</u>	<u>2006</u>	<u>2007</u>
Alabama	3	8	6	5	3
Alaska	0	1	0	0	0
Arizona	4	4	4	4	3
Arkansas	2	1	0	1	0
California	6	7	4	6	6
Colorado	3	3	1	2	0
Connecticut	0	0	2	0	1
Delaware	0	0	0	0	1
District of Columbia	1	1	0	1	0
Florida	7	3	5	11	8
Georgia	5	2	3	2	3
Hawaii	2	0	0	2	0
Idaho	0	0	0	0	0
Illinois	20	19	20	14	18
Indiana	736	663	603	532	588
Iowa	1	2	2	0	1
Kansas	2	1	3	3	0
Kentucky	4	4	2	1	5
Louisiana	0	1	1	1	4
Maine	0	0	1	1	0
Maryland	3	5	2	2	0
Massachusetts	3	1	2	0	2
Michigan	29	25	23	25	22
Minnesota	2	2	1	1	2
Mississippi	1	1	0	0	0
Missouri	3	3	2	1	3
Montana	1	0	0	0	0
Nebraska	0	1	0	0	2
Nevada	2	1	2	1	0
New Hampshire	0	0	1	0	0
New Jersey	0	0	0	1	0
New Mexico	0	2	0	1	0
New York	5	7	6	1	2
North Carolina	1	0	5	2	2
North Dakota	0	1	2	0	0
Ohio	38	39	34	32	32
Oklahoma	2	1	2	3	0
Oregon	0	1	0	0	0
Pennsylvania	2	2	0	2	0
Rhode Island	0	1	1	0	1
South Carolina	1	3	1	2	0
South Dakota	0	0	0	0	0
Tennessee	1	4	4	6	2
Texas	11	3	5	5	2
Utah	2	1	1	0	3
Vermont	0	0	0	0	0
Virginia	3	2	4	2	4
Washington	1	1	0	1	1
West Virginia	3	0	1	1	2
Wisconsin	4	3	2	6	1
Wyoming	0	0	0	0	0
Unclassified & Foreign Transfers	<u>19</u>	<u>22</u>	<u>31</u>	<u>149</u>	<u>19</u>
<b>TOTAL</b>	<b>933</b>	<b>852</b>	<b>789</b>	<b>830</b>	<b>743</b>

**TABLE 7**  
**PROFILE OF ENROLLMENT**  
**FALL SEMESTERS, 1974 - 2007**

<u>Year</u>	<u>Undergraduate</u>	<u>Graduate</u>	<u>Total</u>
1974	6,875	1,253	8,128
1975	7,529	1,432	8,961
1976	7,857	1,336	9,193
1977	7,964	1,393	9,357
1978	7,781	1,234	9,015
1979	7,929	1,262	9,191
1980	8,912	1,270	10,182
1981	9,245	1,138	10,383
1982	9,153	1,005	10,158
1983	9,571	905	10,476
1984	9,301	884	10,185
1985	9,233	1,101	10,334
1986	9,147	1,035	10,182
1987	9,528	1,053	10,581
1988	9,998	1,075	11,073
1989	10,454	968	11,422
1990	10,961	918	11,879
1991	11,206	871	12,077
1992	11,247	843	12,090
1993	10,898	803	11,701
1994	10,674	839	11,513
1995	10,171	840	11,011
1996	9,889	860	10,749
1997	9,815	854	10,669
1998	9,805	848	10,653
1999	9,733	823	10,556
2000	9,773	759	10,532
2001	10,282	847	11,129
2002	10,880	877	11,757
2003	11,068	738	11,806
2004	11,089	721	11,810
2005	11,028	767	11,795
2006	10,890	782	11,672
2007	11,110	833	11,943

**TABLE 8**  
**ENROLLMENT BY CLASS STANDING**  
**FALL SEMESTERS, 2003 - 2007**

<u>Class Level</u>	<u>2003</u>	<u>2004</u>	<u>2005</u>	<u>2006</u>	<u>2007</u>
Freshman	5,019	5,149	4,947	4,921	4,800
Sophomore	2,707	2,526	2,461	2,498	2,562
Junior	1,354	1,378	1,362	1,388	1,371
Senior	1,642	1,747	1,924	1,780	1,926
Undergrad. Non-Degree	346	289	334	303	451
Graduate	623	616	653	633	681
Graduate Non-Degree	<u>115</u>	<u>105</u>	<u>114</u>	<u>149</u>	<u>152</u>
TOTAL	11,806	11,810	11,795	11,672	11,943

---

**TABLE 9**  
**ENROLLMENT BY LEVEL AND RESIDENCY**  
**FALL SEMESTERS, 2003 - 2007**

<u>Student Level</u>	<u>Resident</u>	<u>Non-Resident</u>	<u>Total</u>
<b>Fall, 2003</b>			
Undergraduate	10,699	369	11,068
Graduate	<u>700</u>	<u>38</u>	<u>738</u>
TOTAL	11,399	407	11,806
<b>Fall, 2004</b>			
Undergraduate	10,690	399	11,089
Graduate	<u>683</u>	<u>38</u>	<u>721</u>
TOTAL	11,373	437	11,810
<b>Fall, 2005</b>			
Undergraduate	10,600	428	11,028
Graduate	<u>735</u>	<u>32</u>	<u>767</u>
TOTAL	11,335	460	11,795
<b>Fall, 2006</b>			
Undergraduate	10,421	469	10,890
Graduate	<u>739</u>	<u>43</u>	<u>782</u>
TOTAL	11,160	512	11,672
<b>Fall, 2007</b>			
Undergraduate	10,609	501	11,110
Graduate	<u>792</u>	<u>41</u>	<u>833</u>
TOTAL	11,401	542	11,943

**TABLE 10**  
**UNDERGRADUATE ADMISSIONS AND MATRICULANTS**  
**FALL SEMESTERS, 2003 - 2007**

<u>Admissions</u>	<u>2003</u>	<u>2004</u>	<u>2005</u>	<u>2006</u>	<u>2007</u>
Beginner	2,402	2,621	2,681	2,767	3,012
Transfer	1,100	974	923	1,007	895
Intercampus Transfer	--	--	--	--	--
IC - Permanent	148	170	199	199	173
IC - Temporary	51	38	22	30	24
Readmission	72	86	60	76	88
Re-entry	774	676	615	595	491
Non-degree	<u>372</u>	<u>293</u>	<u>374</u>	<u>340</u>	<u>496</u>
TOTAL	4,919	4,858	4,874	5,014	5,179
<u>Matriculants</u>	<u>2003</u>	<u>2004</u>	<u>2005</u>	<u>2006</u>	<u>2007</u>
Beginner	1,643	1,910	1,895	1,882	2,044
Transfer	788	708	649	699	635
Intercampus Transfer	--	--	--	--	--
IC - Permanent	97	115	128	117	94
IC - Temporary	35	24	10	17	14
Readmission	61	70	52	68	71
Re-entry	494	448	388	344	291
Non-degree	<u>287</u>	<u>207</u>	<u>266</u>	<u>233</u>	<u>387</u>
TOTAL	3,405	3,482	3,388	3,360	3,536

**TABLE 11**  
**CLASS RANK AND TEST SCORES OF BEGINNERS**  
**FALL SEMESTERS, 2003 - 2007**

	<u>2003</u>	<u>2004</u>	<u>2005</u>	<u>2006</u>	<u>2007</u>
Top 20% of High School Class	20.7%	22.8%	22.5%	24.6%	23.6%
Top 50% of High School Class	61.5%	64.0%	65.2%	67.5%	66.4%
Average SAT Verbal/Reading Score	479	483	485	481	477
Average SAT Math Score	482	493	497	495	494
Average SAT Writing Score	--	--	--	--	465
Average SAT Total Score	961	976	982	976	1436

Note: Profiles shown above include only beginners with data on file (83% for class rank, 90% for test scores in 2007). Re-centered scores reported. Beginning in 2005, Critical Reading Test substituted for Verbal Test. Beginning in 2007, SAT Writing Score included.

**TABLE 12**  
**AVERAGE AGE BY STUDENT LEVEL**  
**FALL SEMESTER, 2007**

<u>Level</u>		<u>Average Age</u>	<u>Age Range</u>
Undergraduate	Freshman		
	Associate	23.8	17-58
	Baccalaureate	21.6	17-62
	Sophomore		
	Associate	28.5	19-67
	Baccalaureate	23.5	18-56
	Junior	25.8	18-66
	Senior	28.7	20-81
	Non-degree	32.4	16-87
	Non-degree/high school	17.1	16-20
	Average age for undergraduate students	24.5	16-87
	Graduate	Degree-seeking	33.8
Non-degree		36.7	22-78
Average age for graduate students		34.3	21-78
<b>Average age for all students</b>		<b>25.1</b>	<b>16-87</b>

**TABLE 13**  
**ENROLLMENT BY ETHNIC CATEGORY**  
**FALL SEMESTERS, 2003 - 2007**

<u>Year</u>	<u>American Indian/Alaskan Native</u>		<u>Asian or Pacific Islander</u>		<u>Black</u>		<u>Hispanic</u>		<u>Other, incl. Non-res. Alien</u>		<u>White</u>		<u>TOTAL</u>
	<u>#</u>	<u>%</u>	<u>#</u>	<u>%</u>	<u>#</u>	<u>%</u>	<u>#</u>	<u>%</u>	<u>#</u>	<u>%</u>	<u>#</u>	<u>%</u>	
2003	45	0.4	239	2.0	610	5.2	268	2.3	403	3.4	10,241	86.7	11,806
2004	45	0.4	233	2.0	612	5.2	292	2.5	415	3.5	10,213	86.5	11,810
2005	45	0.4	264	2.2	597	5.1	301	2.6	415	3.5	10,173	86.2	11,795
2006	46	0.4	246	2.1	575	4.9	320	2.7	439	3.8	10,046	86.1	11,672
2007	45	0.4	260	2.2	615	5.1	326	2.7	455	3.8	10,242	85.8	11,943

**TABLE 14**  
**ENROLLMENT BY VISA STATUS**  
**FALL SEMESTERS, 2004-07**

<u>Visa Type</u>	<u>Visa Description</u>	<u>2004</u>	<u>2005</u>	<u>2006</u>	<u>2007</u>
A2	Government Official or Depend	1	0	0	0
B1	Temporary Visitor for Business	0	1	0	0
E2	Treaty Investor or Dependent	1	1	3	1
F1	Academic Student	136	132	132	157
F2	Dependent of Student	3	2	0	0
G2	International Organization Rep	1	1	1	1
H1	Temporary Speciality Occ	8	6	5	4
H2	Dependent of H1	0	1	0	0
H4	Dependent of H1, H2, H3	2	4	7	7
J1	Exchange Visitor	0	1	2	1
J2	Dependent of Exchange Visitor	0	1	2	1
K1	Fiance(e)	1	0	0	0
K3	Fiance(e)	2	0	0	1
L1	Temporary Employee	0	1	1	2
L2	Dependent of L1	3	3	1	0
R1	Religious Worker	0	1	0	0
R2	Religious Worker Dependent	<u>1</u>	<u>1</u>	<u>0</u>	<u>0</u>
	<b>TOTAL</b>	<b>159</b>	<b>156</b>	<b>154</b>	<b>175</b>



**TABLE 15**  
**STUDENTS BY ACADEMIC UNIT AND LEVEL**  
**FALL SEMESTER, 2007**

<u>UNIT</u>	<u>UNDERGRADUATE</u>		<u>GRADUATE</u>		<u>TOTAL</u>	
	<u>#</u>	<u>%</u>	<u>#</u>	<u>%</u>	<u>#</u>	<u>%</u>
<b><u>FULL-TIME STUDENTS</u></b>						
Arts & Sciences	1,545	21.1	41	48.8	1,586	21.4
Business & Mgmt Sci.	747	10.2	27	32.1	774	10.4
Continuing Studies	294	4.0	0	0.0	294	4.0
Education	800	10.9	6	7.1	806	10.9
Engr. Tech. & Comp.Sci.	738	10.1	3	3.6	741	10.0
Health & Human Services	1,071	14.6	0	0.0	1,071	14.5
Labor Studies	1	0.0	0	0.0	1	0.0
Org. Leadership & SPV	137	1.9	1	1.2	138	1.9
Public & Envir. Affairs	268	3.7	6	7.1	274	3.7
Unit of Affil. Programs	1,279	17.5	0	0.0	1,279	17.3
Visual & Performing Arts	<u>443</u>	<u>6.0</u>	<u>0</u>	<u>0.0</u>	<u>443</u>	<u>6.0</u>
TOTAL	7,323	65.9	84	10.1	7,407	62.0
<b><u>PART-TIME STUDENTS</u></b>						
Arts & Sciences	574	15.2	136	18.2	710	15.7
Business & Mgmt Sci.	287	7.6	135	18.0	422	9.3
Continuing Studies	313	8.3	0	0.0	313	6.9
Education	299	7.9	363	48.5	662	14.6
Engr. Tech.&Comp.Sci.	491	13.0	30	4.0	521	11.5
Health & Human Services	604	15.9	23	3.1	627	13.8
Labor Studies	5	0.1	0	0.0	5	0.1
Org. Leadership & SPV	131	3.5	21	2.8	152	3.4
Public & Envir. Affairs	115	3.0	41	5.5	156	3.4
Unit of Affil. Programs	795	21.0	0	0.0	795	17.5
Visual & Performing Arts	<u>173</u>	<u>4.6</u>	<u>0</u>	<u>0.0</u>	<u>173</u>	<u>3.8</u>
TOTAL	3,787	34.1	749	89.9	4,536	38.0
<b><u>TOTAL STUDENTS</u></b>						
Arts & Sciences	2,119	19.1	177	21.2	2,296	19.2
Business & Mgmt Sci.	1,034	9.3	162	19.4	1,196	10.0
Continuing Studies	607	5.5	0	0.0	607	5.1
Education	1,099	9.9	369	44.3	1,468	12.3
Engr. Tech.& Comp.Sci.	1,229	11.1	33	4.0	1,262	10.6
Health & Human Services	1,675	15.1	23	2.8	1,698	14.2
Labor Studies	6	0.1	0	0.0	6	0.1
Org. Leadership & SPV	268	2.4	22	2.6	290	2.4
Public & Envir. Affairs	383	3.4	47	5.6	430	3.6
Unit of Affil. Programs	2,074	18.7	0	0.0	2,074	17.4
Visual & Performing Arts	<u>616</u>	<u>5.5</u>	<u>0</u>	<u>0.0</u>	<u>616</u>	<u>5.2</u>
TOTAL	11,110	93.0	833	7.0	11,943	100.0

Note: Unit of Affiliated Programs includes Conditional Admissions and Academic Counseling and Career Services.

**TABLE 16**  
**STUDENTS BY ACADEMIC UNIT, MAJOR AND PROGRAM**  
**FALL SEMESTERS, 2003 - 2007**

Description	Degr	Major	Prog	Conct	Univ	2003	2004	2005	2006	2007
<b>COLLEGE OF ARTS AND SCIENCES (AS)</b>										
<b>Agriculture and Forestry (AGFR)</b>										
Agriculture	ND	AGR	ASPX		P	14	23	15	20	24
Extension Education	NDG	EXED	EXPX		P	0	0	0	0	0
Non-Deg. Agriculture	ND	AGRN	ASPX		P	0	0	0	0	0
Pre-Forestry	ND	PFOR	ASPX		P	3	2	0	3	3
Pre-Vet Science	ND	PVET	ASPX		P	41	49	45	42	45
Pre-Vet Technology	ND	PVTT	ASPX		P				<u>1</u>	<u>2</u>
AGFR Total						58	74	60	66	74
<b>Arts and Sciences Special Students (ANSS)</b>										
Non-Deg. Arts & Sci.	ND	ASNI	ASIN		I	0	0	0	6	4
Non-Deg. Arts & Sci.	ND	ASNP	ASPN		P	0	0	5	5	8
Undecided Arts & Sci.	ND	UND	ASIN		I	28	41	38	41	33
Undecided Arts & Sci.	ND	UND	ASPN		P	<u>40</u>	<u>29</u>	<u>37</u>	<u>29</u>	<u>43</u>
ANSS Total						68	70	80	81	88
<b>Audiology and Speech Sciences (AUS)</b>										
Audio. & Speech Sci., Grad.	NDG	AUS	AUSN		P	0	0	0	0	0
Speech & Hearing Therapy	BS	SPHT	AUSB		P	<u>54</u>	<u>77</u>	<u>70</u>	<u>84</u>	<u>104</u>
AUS Total						54	77	70	84	104
<b>Biology (BIOL)</b>										
Biological Science	MS	BIOL	BIOM		P	20	25	26	30	30
Pre-Biological Science MS	NDG	BION	BIOP		P	8	3	5	7	1
Biology	AA	BIOL	BIOA		P	0	0	1	3	2
Biology	BS	BIOL	BIOB		P	133	151	160	162	158
Biology Teaching	BS	BIOT	BIOB		P	13	12	11	11	13
Medical Tech.	BS	MT	BIOB		P	10	12	24	26	24
Pre-Dentistry (BIOL)	BS	BIPD	BIOB		P	9	16	25	24	30
Pre-Medicine (BIOL)	BS	BIPM	BIOB		P	106	109	122	134	125
Pre-Professional School	ND	BIPP	ASPX		P	0	2	1	0	1
Research, Cert.	CERT	BIOC	BIOC		P	<u>0</u>	<u>0</u>	<u>0</u>	<u>0</u>	<u>0</u>
BIOL Total						299	330	375	397	384
<b>Center for Academic Support and Advancement (CASA)</b>										
Non-Degree Transitional St	ND	TRN	TRIN		I	0	0	1	0	0
Non-Degree Transitional St	ND	TRN	TRPN		P	2	0	3	0	0
Pre-Major TRS	ND	TRP	TRIP		I	20	18	24	28	23
Pre-Major TRS	ND	TRP	TRPP		P	<u>64</u>	<u>78</u>	<u>51</u>	<u>52</u>	<u>41</u>
CASA Total						86	96	79	80	64
<b>Chemistry (CHM)</b>										
Chemical Methods	AS	CHEM	CHMA		P	2	1	2	3	2
Chemistry	BS	CHEM	CHMB		P	36	36	28	31	21
Chemistry BS in	BSC	CHEC	CHCB		P	5	4	1	1	2
Chemistry BS in-Biochem opt	BSC	CHEB	CHCB		P	5	3	3	6	8
Chemistry Teaching	BS	CHMT	CHMB		P	3	3	3	3	0
Pre-Dentistry (CHM)	BS	CHPD	CHMB		P	3	3	2	4	6
Pre-Medicine (CHM)	BS	CHPM	CHMB		P	9	10	13	11	16
Research, Cert.	CERT	CHMC	CHMC		P	0	0	0	0	0
# Chemistry	MS	CHMM	CHMM		P	<u>0</u>	<u>1</u>	<u>0</u>	<u>1</u>	<u>1</u>
CHM Total						63	61	52	60	56

**TABLE 16**  
**STUDENTS BY ACADEMIC UNIT, MAJOR AND PROGRAMS**  
**FALL SEMESTERS, 2003-2007, continued**

Description	Degr	Major	Prog	Conct	Univ	2003	2004	2005	2006	2007
<b>College of Arts and Sciences Transfers (COAS)</b>										
Afro-American Studies	ND	AFR	ASIX		I	0	0	0	0	0
Anthropology	ND	ANTH	ASIX		I	0	0	0	1	2
Apparel Merchandising	ND	APM	ASIX		I	0	0	0	0	0
Astronomy	ND	AST	ASIX		I	0	0	0	0	0
Biology	ND	BIOL	ASIX		I	0	1	1	0	0
Chemistry	ND	CHEM	ASIX		I	1	0	0	0	0
Classical Studies	ND	CLS	ASIX		I	0	0	0	0	0
Cognitive Science	ND	CGS	ASIX		I	0	0	0	0	0
Comparative Literature	ND	CML	ASIX		I	0	0	0	0	0
Computer Science	ND	CS	ASIX		I	1	0	0	0	0
Criminal Justice	ND	CRMJ	ASIX		I	0	0	0	0	0
East Asian Lang. & Lit.	ND	EAL	ASIX		I	0	0	0	0	0
Economics	ND	ECON	ASIX		I	0	0	0	0	0
English	ND	ENG	ASIX		I	0	0	0	0	0
Folklore	ND	FOLK	ASIX		I	0	0	0	0	0
French	ND	FREN	ASIX		I	0	0	0	1	0
Geography	ND	GEG	ASIX		I	0	0	0	0	0
Geological Sciences	ND	GEOL	ASIX		I	0	0	0	0	0
Germanic Studies	ND	GER	ASIX		I	0	0	0	0	0
History	ND	HIST	ASIX		I	0	0	0	1	1
History of Art	ND	ARH	ASIX		I	0	0	0	0	0
Italian	ND	ITL	ASIX		I	0	0	0	0	0
Jewish Studies	ND	JST	ASIX		I	0	0	0	0	0
Linguistics	ND	LING	ASIX		I	0	0	0	0	0
Mathematics	ND	MA	ASIX		I	0	0	0	0	0
Music	ND	MUS	ASIX		I	0	0	0	0	0
Near Eastern Lang. & Cul.	ND	NEL	ASIX		I	0	0	0	0	0
Philosophy	ND	PHIL	ASIX		I	0	0	1	0	0
Physics	ND	PHYS	ASIX		I	0	0	0	0	0
Political Science	ND	POLS	ASIX		I	0	0	0	0	0
Portugese	ND	POR	ASIX		I	0	0	0	0	0
Psychology	ND	PSY	ASIX		I	0	0	0	0	1
Religious Studies	ND	REL	ASIX		I	0	0	0	0	0
Slavic Lang. & Lit.	ND	SLL	ASIX		I	0	0	0	0	0
Sociology	ND	SOC	ASIX		I	0	0	0	0	1
Spanish	ND	SPAN	ASIX		I	0	0	0	0	0
Speech & Hearing Sciences	ND	SHS	ASIX		I	0	0	0	0	0
Speech Communication	ND	SCM	ASIX		I	0	0	0	0	0
Studio Art	ND	SAR	ASIX		I	0	0	0	0	0
Telecommunications	ND	TEL	ASIX		I	0	0	0	0	0
Theatre and Drama	ND	TD	ASIX		I	0	0	0	0	0
Undecided IU Transfer	ND	UND	ASIX		I	<u>11</u>	<u>9</u>	<u>8</u>	<u>6</u>	<u>4</u>
COAS Total						13	10	10	9	9
<b>Communication (COM)</b>										
Communication, Grad	NDG	COMG	COMN		P	0	0	0	0	0
Intrpersnl & Orgztnl Comm	BA	COMI	COMB		P	52	52	54	59	77
Media and Public Comm	BA	COMM	COMB		P	144	140	137	164	156
Pre-Communication	ND	COMN	COMP		P					9
Profess. Com. Studies	MA	PCSS	PCAM		P	38	40	34	25	30
Pre-Profess Com Studies MA	NDG	PCSN	PCAP		P	4	7	8	6	2
Profess. Com. Studies	MS	PCSS	PCSM		P	0	0	0	0	0

**TABLE 16**  
**STUDENTS BY ACADEMIC UNIT, MAJOR AND PROGRAMS**  
**FALL SEMESTERS, 2003-2007, continued**

Description	Degr	Major	Prog	Conct	Univ	2003	2004	2005	2006	2007
Pre-Profess. Com. Stud MS	NDG	PCSN	PCSP		P	<u>0</u>	<u>0</u>	<u>0</u>	<u>0</u>	<u>0</u>
COM Total						238	239	233	254	274
<b>English and Linguistics (ENGL)</b>										
English	AA	ENG	ENGA		I	1	2	0	2	1
English	BA	ENG	ENGB		I	48	24	24	43	44
English-Comm Media	BA	ENG	ENGB	ENGC	I	7	13	10	11	5
English-Eng Language	BA	ENG	ENGB	ENGL	I	3	2	3	1	6
English-Eng Lit	BA	ENG	ENGB	ENLT	I	18	30	40	31	26
English-Teacher Cert.	BA	ENG	ENGB	ENGT	I	12	9	8	10	12
English-Writing	BA	ENG	ENGB	ENGW	I	23	27	29	25	27
English	MA	ENG	ENGM		I	23	24	18	22	20
Pre-English MA	NDG	ENGN	ENGP		I	11	8	5	7	6
English Teaching	MAT	ENG	ENTM		I	2	7	5	7	2
Pre-English MAT	NDG	ENGN	ENTP		I	5	2	1	3	1
Teach Engl. as New Language UG	CERT	TEUC	TEUC		I		1	4	2	2
Teach Engl. as New Language GR	CERT	TEGC	TEGC		I	<u>    </u>	<u>2</u>	<u>2</u>	<u>1</u>	<u>6</u>
ENGL Total						153	151	149	165	158
<b>Geosciences (GEOS)</b>										
Geology	BA	GEOL	GLAB		I	2	3	2	2	0
Geology BS in	BSG	GEOL	GLSB		I	12	9	12	15	10
Geology (Envir. Geol)	BSG	GLGE	GLSB		I	6	6	7	4	4
Geology, Undeclared	ND	GEOL	ASIN		I	<u>0</u>	<u>0</u>	<u>1</u>	<u>0</u>	<u>0</u>
GEOS Total						20	18	22	21	14
<b>Graduate School Transfers (GRAD)</b>										
Creative Arts	NDG	CAM	CAMN		P	0	0	0	0	0
Industrial Tech.	NDG	PITM	PITN		P	0	0	0	0	0
Social Work	NDG	SWK	SWKN		I	0	0	0	0	0
Unassigned Grad.	NDG	GRU	GRIN		I	5	0	5	17	29
Unassigned Grad.	NDG	GRU	GRPN		P	<u>0</u>	<u>0</u>	<u>0</u>	<u>4</u>	<u>0</u>
GRAD Total						5	0	5	21	29
<b>History (HIST)</b>										
History	AA	HIST	HISA		I	3	1	3	2	1
History	BA	HIST	HISB		I	<u>73</u>	<u>74</u>	<u>87</u>	<u>82</u>	<u>77</u>
HIST Total						76	75	90	84	78
<b>Interdisciplinary Studies (IDS)</b>										
Amer. Studies, Cert	CERT	AMSC	AMSC		I	0	0	0	0	0
Eth. & Cul. St., Cert	CERT	ETHC	ETHC		I	0	0	0	0	0
Gerontology, Cert	CERT	GRNC	GRNC		I	3	1	1	1	1
Intrntnl Studies, Cert	CERT	INTC	INTC		I	1	0	3	1	0
Liberal Studies	MLS	LBST	LBSM		I	20	17	20	13	18
Pre-Liberal Studies MLS	NDG	LBSN	LBSP		I	3	6	3	1	3
Peace & Conflict Stds Cert	CERT	PACC	PACC		I	<u>0</u>	<u>0</u>	<u>1</u>	<u>0</u>	<u>0</u>
IDS Total						27	24	28	16	22
<b>International Language and Culture Studies (ILCS)</b>										
French	AA	FREN	FREA		I	0	0	0	0	2
French	BA	FREN	FREB		I	5	2	7	4	4
French - Teacher Cert.	BA	FRET	FREB		I	3	1	2	2	3
German	AA	GER	GERA		I	1	0	0	1	0
German	BA	GER	GERB		I	6	5	9	11	10
German - Teacher Cert.	BA	GERT	GERB		I	0	2	2	3	5
Spanish	AA	SPAN	SPAA		I	2	5	3	4	3
Spanish	BA	SPAN	SPAB		I	24	21	24	33	34

**TABLE 16**  
**STUDENTS BY ACADEMIC UNIT, MAJOR AND PROGRAMS**  
**FALL SEMESTERS, 2003-2007, continued**

Description	Degr	Major	Prog	Conct	Univ	2003	2004	2005	2006	2007
Spanish - Teacher Cert.	BA	SPAT	SPAB		I	<u>11</u>	<u>10</u>	<u>14</u>	<u>11</u>	<u>11</u>
ILCS Total						52	46	61	69	72
<b>Journalism (JOUR)</b>										
Journalism	ND	JOUR	ASIX		I	<u>11</u>	<u>11</u>	<u>18</u>	<u>12</u>	<u>14</u>
JOUR Total						11	11	18	12	14
<b>Mathematical Sciences (MATH)</b>										
Appl. Math.-Oper. Res.	MS	APMM	MATM		P	1	1	1	0	3
Pre-Appl. Math.-Oper. Res.	NDG	APMN	MATP		P	0	0	0	0	0
Applied Statistics Grad, Cert.	CERT	MASC	MASC		P	0	1	1	1	1
Computer Science	BA	CS	CSAB		P	4	2	0	0	0
Math BS-Actuarial Sci.	BS	MAAS	MATB		P	16	16	17	10	7
Math BS-Business	BS	MBUS	MATB		P		1	1	2	2
Math BS-Computing	BS	MACM	MATB		P	4	5	2	3	7
Math BS-Statistics	BS	MAST	MATB		P	1	1	1	0	5
Mathematical Sciences	MS	MA	MATM		P	12	14	15	11	7
Pre-Math Sciences MA	NDG	MAN	MATP		P	3	6	4	4	3
Mathematics	AA	MA	MATA		P	0	1	0	3	3
Mathematics	BS	MA	MATB		P	26	25	14	17	19
Mathematics Teaching	BS	MATT	MATB		P	54	56	60	58	60
Research, Cert.	CERT	MATC	MATC		P	<u>0</u>	<u>0</u>	<u>0</u>	<u>0</u>	<u>0</u>
MATH Total						121	129	116	109	117
<b>Philosophy (PHIL)</b>										
Philosophy	BA	PHIL	PHIB		P	20	24	19	20	30
Philosophy, Graduate	NDG	PHIL	PHIN		P	<u>0</u>	<u>0</u>	<u>0</u>	<u>0</u>	<u>0</u>
PHIL Total						20	24	19	20	30
<b>Physics (PHYS)</b>										
Physics	BS	PHYS	PHYB		P	13	19	20	19	22
Physics, Graduate	NDG	PHYS	PHYN		P	0	0	0	0	0
Physics Teaching	BS	PHYT	PHYB		P	4	6	3	1	2
Research, Cert.	CERT	PHYC	PHYC		P	<u>0</u>	<u>0</u>	<u>0</u>	<u>0</u>	<u>0</u>
PHYS Total						17	25	23	20	24
<b>Political Science (POLS)</b>										
Economics	BA	ECON	ECOB		I	14	17	11	11	8
Political Science	AA	POLS	POLA		I	1	1	1	2	2
Political Science	BA	POLS	POLB		I	<u>85</u>	<u>86</u>	<u>87</u>	<u>79</u>	<u>85</u>
POLS Total						100	104	99	92	95
<b>Psychology (PSY)</b>										
Psychology	AA	PSY	PSYA		P	5	4	14	17	16
Psychology	BA	PSY	PSYB		P	339	364	379	361	338
Psychology, Graduate	NDG	PSY	PSYN		P	0	0	0	0	0
Research, Cert.	CERT	PSYC	PSYC		P	<u>0</u>	<u>0</u>	<u>0</u>	<u>2</u>	<u>1</u>
PSY Total						344	368	393	380	355
<b>Science and Other PU Transfers (SCIT)</b>										
Atmospheric Science	ND	ATM	ASPX		P	0	0	0	0	0
Audiology & Speech Sci.	ND	AUS	ASPX		P	0	0	0	0	0
Biological Science	ND	BIOL	ASPX		P	0	0	0	0	0
Chemistry	ND	CHEM	ASPX		P	0	0	0	0	0
Communication	ND	COM	ASPX		P	0	0	0	0	0
Community Health	ND	CHL	ASPX		P	0	0	0	0	0
Computer Science	ND	CS	ASPX		P	0	0	0	0	0
Economics	ND	ECON	ASPX		P	0	0	0	0	0
English	ND	ENG	ASPX		P	0	0	0	0	0

**TABLE 16**  
**STUDENTS BY ACADEMIC UNIT, MAJOR AND PROGRAMS**  
**FALL SEMESTERS, 2003-2007, continued**

Description	Degr	Major	Prog	Conct	Univ	2003	2004	2005	2006	2007
Fine Arts	ND	PFA	ASPX		P	0	0	0	0	0
French	ND	FREN	ASPX		P	0	0	0	0	0
Geology	ND	GEOL	ASPX		P	0	0	0	0	0
German	ND	GER	ASPX		P	0	0	0	0	0
History	ND	HIST	ASPX		P	0	0	0	0	0
Mathematics	ND	MA	ASPX		P	0	0	0	0	0
Media Sciences	ND	MDS	ASPX		P	0	0	0	0	0
Philosophy	ND	PHIL	ASPX		P	0	0	0	0	0
Physical Education	ND	PPE	ASPX		P	0	1	0	0	0
Physics	ND	PHYS	ASPX		P	0	0	0	0	0
Political Science	ND	POLS	ASPX		P	0	0	0	0	0
Pre-Pharmacy	ND	PPPH	ASPX		P	63	68	56	68	75
Psychological Sciences	ND	PSY	ASPX		P	1	0	0	1	1
Recreation	ND	REC	ASPX		P	0	0	0	0	0
Sociology	ND	SOC	ASPX		P	0	0	0	0	0
Spanish	ND	SPAN	ASPX		P	0	0	0	0	0
Statistics	ND	STA	ASPX		P	0	0	0	0	0
Undecided/Other PU Transfer	ND	UND	ASPX		P	<u>10</u>	<u>4</u>	<u>6</u>	<u>5</u>	<u>6</u>
SCIT Total						74	73	62	74	82
<b>Sociology and Anthropology (SOCA)</b>										
Anthropology	BA	ANTH	ANTB		I	65	69	81	74	73
Native American Stds Cert.	CERT	NAMC	NAMC		I	0	1	1	1	0
Research, Cert.	CERT	ANTC	ANTC		I	0	0	0	0	0
Sociological Practice	MA	SOC	SOCM		I	5	3	12	18	14
Pre-Sociological Practice	NDG	SOCN	SOC		I	2	1	2	1	0
Sociology-Crime & Deviance	BA	SOC	SOCB	SOC	I			1	0	0
Sociology-Family & Community	BA	SOC	SOCB	SOC	I		1	0	0	0
Sociology-Organization & Soc Ch	BA	SOC	SOCB	SOC	I			1	0	0
Sociology	BA	SOC	SOCB		I	<u>44</u>	<u>49</u>	<u>70</u>	<u>71</u>	<u>56</u>
SOCA Total						116	124	168	165	143
<b>Women's Studies (WOST)</b>										
Women's Studies	AA	WST	WSIA		I	0	0	0	1	1
Women's Studies	AA	WST	WSPA		P	0	0	0	0	2
Women's Studies	BA	WST	WSIB		I	6	7	7	6	6
Women's Studies	BA	WST	WSPB		P	0	1	0	2	1
Women's Studies, Cert	CERT	WSIC	WSIC		I	0	0	0	0	0
Women's Studies, Cert	CERT	WSPC	WSPC		P	<u>0</u>	<u>0</u>	<u>0</u>	<u>1</u>	<u>0</u>
WOST Total						6	8	7	10	10
<i>COLLEGE OF ARTS AND SCIENCES TOTAL</i>						2,021	2,137	2,219	2,289	2,296
<b>SCHOOL OF BUSINESS AND MANAGEMENT SCIENCES (BU)</b>										
<b>Accounting/Finance (ACFN)</b>										
Accounting	BSB	BUS	BUSB	ACCB	I	103	102	90	93	100
Finance	BSB	BUS	BUSB	BFIN	I	43	31	32	38	35
Accounting, P-B Cert.	CPB	BUSC	BUSC		I	<u>36</u>	<u>43</u>	<u>47</u>	<u>44</u>	<u>29</u>
ACFN Total						182	176	169	175	164
<b>Business and Management Sciences (BMS)</b>										
Pre-MBA Undergrad	ND	BSCG	BUSN		I	61	10	2	1	0
Business-General Bach.	ND	BSBG	BUSN		I	278	268	284	397	662
Business-Probationary Bach.	ND	BUSP	BUSN		I	1	1	4	5	37
Business-Special	ND	BUSS	BUSN		I	6	5	4	9	3
General Administration	MBA	MBA	BUSM		I	116	110	130	139	152

**TABLE 16**  
**STUDENTS BY ACADEMIC UNIT, MAJOR AND PROGRAMS**  
**FALL SEMESTERS, 2003-2007, continued**

Description	Degr	Major	Prog	Conct	Univ	2003	2004	2005	2006	2007
Gen Admin Accounting Conc	MBA	MBA	BUSM	ACCB	I	0	2	0	0	0
Gen Admin Finance Conc	MBA	MBA	BUSM	BFIN	I	1	0	0	0	0
Non-Degree MBA Grad	NDG	MBAN	BUSP		I	1	1	1	2	4
Grad. Bus.-Conditional	NDG	MBAC	BUMN		I	<u>6</u>	<u>5</u>	<u>3</u>	<u>7</u>	<u>6</u>
BMS Total						470	402	428	560	864
<b>Economics (ECON)</b>										
Bus. Econ. & Public Pol	BSB	BUS	BUSB	BEPP	I	<u>11</u>	<u>9</u>	<u>9</u>	<u>6</u>	<u>12</u>
ECON Total						11	9	9	6	12
<b>Management/Marketing (MGMK)</b>										
Business Administration	ASB	BUS	BUSA	BMAA	I	71	74	58	50	40
Marketing	BSB	BUS	BUSB	BMKT	I	46	59	47	52	50
Mgmt. & Admin.	BSB	BUS	BUSB	BMAD	I	<u>42</u>	<u>63</u>	<u>89</u>	<u>85</u>	<u>66</u>
MGMK Total						159	196	194	187	156
<i>SCHOOL OF BUSINESS &amp; MANAGEMENT SCIENCES TOTAL</i>						822	783	800	928	1,196

**DIVISION OF CONTINUING STUDIES (CS)**

**General Studies (GNST)**

General Studies	AAGS	GNST	GSTA		I	126	130	108	124	111
General Studies Distance	AAGS	GNSD	GSTA		I			2	1	0
General Studies	BGS	GNST	GSTB		I	343	353	422	483	488
General Studies Distance	BGS	GNSD	GSTB		I			15	11	7
General Studies Non Degree	ND	GNST	GSTN		I				<u>1</u>	<u>1</u>
<i>DIVISION OF CONTINUING STUDIES TOTAL</i>						469	483	547	620	607

**SCHOOL OF EDUCATION (ED)**

**Education (EDUA)**

Adult Education	NDG	EACE	EDMN		I	0	0	0	0	0
Education Pre-Major	ND	EDUP	EDUP		I	144	112	119	99	98
Elementary Ed - PU Transfer	ND	ELED	EDPX		P	3	4	4	3	4
Elementary Ed Certification	ND	ELED	EDCN		I	44	57	45	36	24
Non-Degree Education	ND	EDND	EDUN		I	0	0	0	2	2
Secondary Ed Certification	ND	SEED	EDCN		I	89	82	75	56	35
Social Stds Ed-PU Transfer	ND	SSTD	EDPX		P	0	0	0	0	0
Special Ed	ND	SPED	EDIX		I	0	0	0	0	1
Special Ed - PU Transfer	ND	SPED	EDPX		P	0	0	0	0	0
Undecided Education	ND	UND	EDUN		I	<u>0</u>	<u>0</u>	<u>0</u>	<u>0</u>	<u>0</u>
EDUA Total						280	255	243	196	164

**Educational Studies (EDES)**

Early Childhood Ed. AS	ASED	ECHA	EDUA		I	36	39	47	34	34
Earth-Sp. Sci. Educ.	BSED	ESED	EDUB		I	3	0	0	0	0
Elementary Ed BSEd	BSED	ELED	EDUB		I	759	535	411	192	259
Elem Ed-Early Childhood	BSED	ELED	EDUB	EDEC	I		146	203	295	275
Elem Ed-Middle Childhood	BSED	ELED	EDUB	EEMC	I		34	46	88	68
Elementary Ed MSEd	MSED	ELED	EDUM		I	53	59	61	63	57
Elementary Ed Cert(Grad)	CERT	ELED	EDUC		I	15	15	8	9	12
Pre-Elementary Ed MSEd	NDG	ELEN	EDMP		I	22	29	53	57	60
# English Ed	BSED	ENGE	EDUB		I	81	53	32	1	0
# French Ed	BSED	FREE	EDUB		I	1	1	0	0	0
# General Science	BSED	GSCE	EDUB		I	12	12	1	0	0
# German Ed	BSED	GERE	EDUB		I	1	1	0	0	0
# Secondary Ed.	BSED	SEED	EDUB		I	13	4	2	1	0
Secondary Ed Undeclared Conct	BSED	SEED	EDSB		I			7	19	62

**TABLE 16**  
**STUDENTS BY ACADEMIC UNIT, MAJOR AND PROGRAMS**  
**FALL SEMESTERS, 2003-2007, continued**

Description	Degr	Major	Prog	Conct	Univ	2003	2004	2005	2006	2007
Sec. Ed.- Early Adolescence Ed	BSED	SEED	EDSB	SEEA	I		28	47	70	61
Sec. Ed.- Earth Sp Sci Ed	BSED	SEED	EDSB	ESED	I		1	2	2	3
Sec. Ed.- English Ed	BSED	SEED	EDSB	ENGE	I		35	45	61	51
Sec. Ed.- French Ed	BSED	SEED	EDSB	FREE	I		0	0	1	2
Sec. Ed.- German Ed	BSED	SEED	EDSB	GERE	I		0	1	0	1
Sec. Ed.- Social Studies Ed	BSED	SEED	EDSB	SSTD	I		55	74	117	106
Sec. Ed.- Spanish Ed	BSED	SEED	EDSB	SPAE	I		4	9	7	8
Secondary Ed. MSED	MSED	SEED	EDUM		I	43	41	38	33	29
Pre-Secondary Ed. MSED	NDG	SEEN	EDMP		I	24	8	10	14	17
Secondary Ed Cert. (Grad)	CERT	SEED	EDUC		I	12	11	8	17	12
# Social Studies Educ.	BSED	SSTD	EDUB		I	119	88	49	4	0
# Spanish Education	BSED	SPAE	EDUB		I	<u>8</u>	<u>6</u>	<u>3</u>	<u>0</u>	<u>0</u>
EDES Total						1,202	1,205	1,157	1,085	1,117
<b>Health/Physical Ed/Rec (HPER)</b>										
HPER Transfer, Graduate	NDG	HPRM	EDMN		I	0	0	0	0	0
HPER Transfer, Undergrad.	ND	HPRU	EDIX		I	<u>7</u>	<u>8</u>	<u>9</u>	<u>8</u>	<u>5</u>
HPER Total						7	8	9	8	5
<b>Professional Studies (EDPS)</b>										
Counseling	MSED	CNSM	EDUM		I	68	69	74	77	80
Pre-Counseling, MSED	NDG	CNSN	EDMP		I	0	1	0	0	0
School Ldrshp.	MSED	EDLD	EDUM		I	122	95	116	76	84
Pre-School Ldrshp. MSED	NDG	EDLN	EDMP		I	11	19	8	5	3
# Dental Health Ed.	BSED	DHED	EDUB		I	1	0	0	0	0
Special Education, MSED	MSED	SPED	EDUM		I					13
Pre-Special Education, MSED	NDG	SPEN	EDMP		I					<u>2</u>
EDPS Total						<u>202</u>	<u>184</u>	<u>198</u>	<u>158</u>	<u>182</u>
<i>SCHOOL OF EDUCATION TOTAL (2003 data corrected)</i>						1,691	1,652	1,607	1,447	1,468

**COLLEGE OF ENGINEERING, TECHNOLOGY, AND COMPUTER SCIENCE (ET)**

**Civil and Architectural Engineering Technology (CAET)**

Architectural Engr. Tech.	AS	ARET	ARTA		P	87	75	78	84	70
Arch. Engr. Tech., Non-Deg.	ND	AREN	ARTN		P	0	0	0	0	0
Civil Engr. Tech.	AS	CVET	CETA		P	57	40	43	46	44
Civil Engr. Tech., ND	ND	CVEN	CETN		P	0	0	0	0	0
Construction Engr. Tech.	BS	CNET	CNTB		P	13	28	13	14	21
Interior Design	AS	INTR	INTA		P	86	104	98	96	84
Interior Design	BS	INTR	INTB		P				<u>1</u>	<u>8</u>
CAET Total						<u>243</u>	<u>247</u>	<u>232</u>	<u>241</u>	<u>227</u>

**Computer Science (CS)**

Applied Computer Science	MS	ACS	ACSM		P	23	15	21	23	16
Pre-Applied Computer Sci	NDG	ACSN	ACSP		P	8	5	3	6	5
Computer Science	AS	CS	CSCA		P	195	165	141	131	141
Computer Science	BS	CS	CSCB		P	29	38	35	36	35
Computer Science, Non-Deg.	ND	CSND	CSCN		P	1	1	1	1	0
Information Systems	AS	INSY	ISYA		P	59	43	59	50	55
Information Systems	BS	INSY	ISYB		P	<u>17</u>	<u>35</u>	<u>31</u>	<u>27</u>	<u>22</u>
CS Total						332	302	291	274	274

**Electrical and Computer Engineering Technology (ECET)**

Adv. Microprocessors	CERT	AMPC	AMPC		P	0	1	1	0	1
Computer Controlled Systems	CERT	CCSC	CCSC		P	1	2	0	1	1



**TABLE 16**  
**STUDENTS BY ACADEMIC UNIT, MAJOR AND PROGRAMS**  
**FALL SEMESTERS, 2003-2007, continued**

Description	Degr	Major	Prog	Conct	Univ	2003	2004	2005	2006	2007
Computer Engineering Tech.	BS	CPET	CGTB		P		7	47	66	76
Computer Networking	CERT	CNWC	CNWC		P	1	2	2	1	0
Elec. Engr. Tech.	AS	EET	EETA		P	178	134	98	101	99
Electrical Engr. Tech.	BS	EET	EETB		P	39	49	44	34	31
Elec. Engr. Tech., Non-Deg.	ND	EETN	EETN		P	0	0	0	0	0
Electronic Communications	CERT	ELCC	ELCC		P	0	0	0	0	0
# Power Electronic Systems	CERT	PESC	PESC		P	0	0	0	0	0
ECET Total						219	195	192	203	208
<b>Engineering (ENGR)</b>										
Aeronaut. & Astro. Engr.	ND	PAAE	ETPX		P	0	0	0	0	0
Agricultural Engr.	ND	PAGE	ETPX		P	0	0	0	0	0
Chemical Engineering	ND	PCHE	ETPX		P	0	0	0	0	0
Civil Engineering	ND	PCE	ETPX		P	0	0	0	0	0
Civil Engineering	BSCE	CE	ECEB		P				4	8
Computer Engineering	BSCPE	CPE	ENCB		P		5	6	12	14
Electrical Engineering	BSEE	EE	ENEB		P	55	42	51	51	48
Electrical Engr., Grad.	NDG	EE	ETMN		P	0	0	0	0	0
Engineering, Non-Deg.	ND	ENND	ENRN		P	0	0	0	0	0
Pre-Engineering	ND	ENGP	ENRP		P	17	19	16	5	12
Freshman Engineering	ND	FENR	ENRP		P	117	117	119	131	167
Industrial Engr.	ND	PIE	ETPX		P	1	0	0	0	0
Industrial Engr., Grad.	NDG	PIE	ETMN		P	0	0	0	0	0
Materials Engr.	ND	PMSE	ETPX		P	0	0	0	0	0
Mechanical Engr.	BSME	ME	ENMB		P	75	59	60	63	69
Mechanical Engr., Grad.	NDG	ME	ETMN		P	0	0	0	0	0
ENGR Total						265	242	252	266	318
<b>Engineering, Technology, and Computer Science Special Students (ENTS)</b>										
Technology, MS- Indus. Tech/Mnuf.	MS	TECH	ETUM	INTM	P					4
Tech, MS-Info Tech/Adv Comp App	MS	TECH	ETUM	ITCA	P					4
Tech, MS-Undeclared Conc.	MS	TECH	ETUM		P					2
Pre-Technology, MS	NDG	TECN	ETUP		P					2
Technology, Undecided	ND	UND	ETUN		P	29	31	70	55	38
ENTS Total						29	31	70	55	50
<b>Mechanical and Industrial Engineering Technology (MIET)</b>										
Indus. Engr. Tech. AS	AS	IET	IETA		P	32	30	24	22	22
Indus. Engr. Tech.	BS	IET	IETB		P	9	8	6	5	4
Indus. Engr. Tech., Non-Deg.	ND	IETN	IETN		P	0	0	0	0	0
Mech. Engr. Tech.	AS	MET	META		P	135	124	111	113	132
Mech. Engr. Tech.	BS	MET	METB		P	43	53	62	42	26
Mech. Engr. Tech., Non-Deg.	ND	METN	METN		P	0	0	0	0	0
Quality , Cert.	CERT	QLTC	QLTC		P	1	1	0	1	1
MFT Total						220	216	203	183	185
<i>COLLEGE OF ENGINEERING, TECHNOLOGY AND COMPUTER SCIENCE</i>						1,308	1,233	1,240	1,222	1,262
<b>COLLEGE OF HEALTH AND HUMAN SERVICES (HS)</b>										
<b>Allied Health and IU Nursing (AHLT)</b>										
Health Sciences Ed.-Grad.	NDG	HSG	HSMN		I	0	0	0	0	0
Non-Deg. Allied Health	ND	AHND	HSIX		I	0	0	0	0	0
Nursing-IU Transfer	ND	NURS	HSIX		I	0	0	0	0	0
Pre-Cytotechnology	ND	PCYT	HSIX		I	1	1	2	0	1
Pre-Health Info. Admin.	ND	PHIA	HSIX		I	7	1	2	3	3
Pre-Medical Imaging Tech.	ND	PMIT	HSIX		I	3	2	1	4	0

**TABLE 16**  
**STUDENTS BY ACADEMIC UNIT, MAJOR AND PROGRAMS**  
**FALL SEMESTERS, 2003-2007, continued**

Description	Degr	Major	Prog	Conct	Univ	2003	2004	2005	2006	2007
Pre-Medical Tech	ND	MT	HSIX		I	0	0	1	0	0
Pre-Nuclear Med. Tech.	ND	PNMT	HSIX		I	2	4	2	4	4
Pre-Occupational Therapy	ND	POCT	HSIX		I	4	2	0	0	0
Pre-Paramedic Science	ND	PPAR	HSIX		I	3	1	2	0	0
Pre-Radiation Therapy	ND	PRAD	HSIX		I	5	4	4	3	10
Pre-Respiratory Thpy. Bach.	ND	PRTB	HSIX		I	1	1	1	4	2
Undecided Allied Health	ND	UND	HSIX		I	<u>5</u>	<u>1</u>	<u>0</u>	<u>0</u>	<u>0</u>
AHLT Total						31	17	15	18	20
<b>Consumer and Family Sciences (CFS)</b>										
CFS, Non-Degree	ND	CFND	CFSN		P	0	0	0	0	0
Home Econ-PU Transfer	ND	HEC	CFPX		P	6	10	7	8	5
Hospitality Management	BS	HTM	CFSB		P	48	62	64	83	101
Hotel, Rest. & Trsm. Mgt. AS	AS	HTM	CFSA		P	<u>10</u>	<u>16</u>	<u>14</u>	<u>12</u>	<u>16</u>
CFS Total						64	88	85	103	122
<b>Dental Education (DAE)</b>										
Dental Assisting, Cert.	CERT	DNAC	DNAC		I	14	25	25	24	24
Dental Hygiene	ASDH	DHYG	DNTA		I	34	59	59	59	58
Dental Lab. Tech.	ASDL	DLTP	DNLA		I	12	10	39	38	33
Non-Degree Dental Ed.	ND	DEND	DNTN		I	0	0	0	0	0
Pre-Dental Assisting	ND	DNAC	DNTP		I	16	8	15	34	30
Pre-Dental Hygiene	ND	DHYG	DNTP		I	88	118	127	120	114
Pre-Dental Lab Tech	ND	DLTP	DNLP		I	<u>10</u>	<u>18</u>	<u>3</u>	<u>2</u>	<u>1</u>
DAE Total						174	238	268	277	260
<b>Health Information Technology (HIT)</b>										
# Health Info. Tech	ASHI	HIT	HITA		I	<u>3</u>	<u>4</u>	<u>0</u>	<u>0</u>	<u>0</u>
HIT Total						3	4	0	0	0
<b>Health Sciences (HSC)</b>										
Clinical Laboratory Sciences	BCLS	CLSB	HCLB		I	1	1	0	0	0
Health Sciences/Undecided	ND	UND	HSIN		I	46	34	43	58	64
Health Sciences/Undecided	ND	UND	HSPN		P	16	24	28	44	36
Pre-Clinical Lab Sciences	ND	CLSB	HCLP		I	6	3	1	0	0
Pre-Radiography	ND	RAD	HSRP		I	157	189	156	138	132
Radiography	ASR	RAD	HSRA		I	<u>36</u>	<u>36</u>	<u>33</u>	<u>31</u>	<u>26</u>
HSC Total						262	287	261	271	258
<b>Human Services (HSRV)</b>										
Human Services	BS	HSV	HSVB		P	20	28	38	33	41
Human Srvs Actvty Rec Ther	BS	HSV	HSVB	HSAT	P	0	0	0	0	0
Human Srvs Addictions	BS	HSV	HSVB	HSAD	P	0	0	0	0	0
Human Srvs AgencyLdrship	BS	HSV	HSVB	HSAL	P	0	0	0	0	0
Human Srvs Child Adol Srvcs	BS	HSV	HSVB	HSCS	P	0	0	0	0	0
Human Srvs Devel Disabil.	BS	HSV	HSVB	HSDD	P	0	0	0	0	0
Human Serv Psych Rehab	BS	HSV	HSVB	HSPR	P	0	0	0	0	0
Pre-Human Services	ND	HSV	HSVP		P	<u>14</u>	<u>21</u>	<u>33</u>	<u>40</u>	<u>83</u>
HSRV Total						34	49	71	73	124
<b>Nursing (NUR)</b>										
Acute Care Clincl Nurse Spec	ND	NURC	NUMN		P	0	0	0	0	0
Critical Care Nursing, Cert.	CERT	CCNC	CCNC		P	0	0	0	0	0
Family Nurse Practitioner	ND	NURP	NUMN		P	0	0	0	0	0
Nursing Admn, Cert.	CERT	NUAC	NUAC		P	0	0	0	0	0
Nursing Admn/Calumet/MS	MS	NURL	NURM		P	0	0	0	0	0
Pre-Nursg Admn/Calumet/	NDG	NUCN	NUMP		P	0	0	0	0	0
Nursing Admin,	MS	NURA	NURM		P	3	6	6	5	11
Pre-Nursng Admin, MS	NDG	NURN	NUMP		P	5	6	6	14	12

**TABLE 16**  
**STUDENTS BY ACADEMIC UNIT, MAJOR AND PROGRAMS**  
**FALL SEMESTERS, 2003-2007, continued**

Description	Degr	Major	Prog	Conct	Univ	2003	2004	2005	2006	2007
Nursing	AS	NURS	NURA		P	306	286	278	296	259
Nursing	BS	NURS	NURB		P	33	48	57	55	61
Nursing Generic	BS	NURS	NURG		P				32	90
Nursing, Conditional Bach.	ND	NURS	NURN		P	7	11	1	4	4
Nursing, Non-Degree	ND	NURN	NURN		P	0	0	0	0	0
Nursing, Non-Degree Assoc.	ND	NDNU	NURN		P	0	0	0	0	0
Pre-Nursing	ND	NURS	NURP		P	<u>792</u>	<u>661</u>	<u>489</u>	<u>478</u>	<u>477</u>
NUR Total						1,146	1,018	837	884	914
<i>COLLEGE OF HEALTH AND HUMAN SERVICES TOTAL</i>						<i>1,714</i>	<i>1,701</i>	<i>1,537</i>	<i>1,626</i>	<i>1,698</i>

**DIVISION OF LABOR STUDIES (LS)**

**Labor Studies (LBS)**

Labor Studies,	ASLS	LS	LSTA		I	3	5	3	4	1
Labor Studies,	BSLS	LS	LSTB		I	0	2	3	4	5
Labor Studies, Cert.	CLBS	LSTC	LSTC		I	1	1	1	0	0
Labor Studies, Non-Deg.	ND	LSN	LSTN		I	<u>0</u>	<u>0</u>	<u>0</u>	<u>0</u>	<u>0</u>
<i>DIVISION OF LABOR STUDIES TOTAL</i>						<i>4</i>	<i>8</i>	<i>7</i>	<i>8</i>	<i>6</i>

**DIVISION OF ORGANIZATIONAL LEADERSHIP AND SUPERVISION (OL)**

**Organizational Leadership and Supervision (OLS)**

Org. Leadership & Spv.	AS	OLS	OLSA		P	136	112	90	98	80
Org. Leadership & Spv.	BS	OLS	OLSB		P	174	186	187	171	184
Org. Leadership & Spv. ND	ND	OLSN	OLSN		P	0	0	0	0	0
Org. Leadership & Spv.	MS	OLS	OLSM		P				10	20
Pre-Org. Leadership & Spv. MS	NDG	OLSN	OLSP		P				1	2
Supervisory Ldrshp. Cert.	CERT	OLSC	OLSC		P	<u>17</u>	<u>10</u>	<u>3</u>	<u>4</u>	<u>4</u>
<i>DIVISION OF ORGANIZATIONAL LEADERSHIP &amp; SUPERVISION TOTAL</i>						<i>327</i>	<i>308</i>	<i>280</i>	<i>284</i>	<i>290</i>

**DIVISION OF PUBLIC AND ENVIRONMENTAL AFFAIRS (PA)**

**Public and Environmental Affairs (PEA)**

Pre-Crim Justice Admin & Policy	NDG	PMGN	MPMP	CJAD	I	0	0	0	0	0
Criminal Justice	BSPA	CRMJ	PAFB		I	7	9	35	71	77
Criminal Justice MPA	MPA	PAFF	MPAM	CRMJ	I	9	13	8	2	3
# Criminal Justice Admin & Policy	MPM	PMGM	MPMM	CRMJ	I			4	0	0
Criminal Justice Adm MPM	MPM	PMGM	MPMM	CJAD	I				5	4
Environmental Policy	BSPA	ENVP	PAFB		I	8	6	4	5	6
Health Svcs Admin	BSPA	HSAB	PAFB		I	10	10	13	18	19
Health Systems Admin.	MPA	PAFF	MPAM	HSAM	I	4	6	1	2	3
# Health Systems Admin & Policy	MPM	PMGM	MPMM	HSAM	I			8	0	0
Health Systems Adm & Pol MPM	MPM	PMGM	MPMM	HADM	I				7	9
Legal Studies	BSPA	LGPA	PAFB		I	8	4	9	16	15
Non-Degree PEA	ND	PEAN	PEAN		I	0	0	0	0	0
Pre-Health Syst Admin. MPA	NDG	PAFN	MPAP	HSAM	I	0	1	0	0	0
Pre-Criminal Justice MPA	NDG	PAFN	MPAP	CRMJ	I	3	0	0	0	0
Pre-Public Management MPA	NDG	PAFN	MPAP	MGPA	I	0	1	0	0	0
Pre-Public Affairs - Bach.	ND	PBPA	PEAP		I	25	178	218	169	224
Pre-Criminal Justice - Bach.	ND	PCJB	PEAP		I	129	54	11	4	4
#Public Management	MPM	PMGM	MPMM		I			3	0	0
#Public Admin & Policy	MPM	PMGM	MPMM	MGPA	I			8	0	0
Public Admin & Policy MPM	MPM	PMGM	MPMM	PADM	I				16	16
Public Management	MPA	PAFF	MPAM	MGPA	I	13	25	10	10	6
Public Management	BSPA	MGPA	PAFB		I	12	13	17	13	14
Public Mgmt., Cert.	CERT	PMGC	PMGC		I	10	5	4	2	6

**TABLE 16**  
**STUDENTS BY ACADEMIC UNIT, MAJOR AND PROGRAMS**  
**FALL SEMESTERS, 2003-2007, continued**

Description	Degr	Major	Prog	Conct	Univ	2003	2004	2005	2006	2007
Risk & Emergency Mgmt, Cert.	CERT	RMGC	RMGC		I				1	1
Specialized Study	BSPA	SPEC	PAFB		I	0	0	0	0	0
#Criminal Justice	ASCJ	CRMJ	CRJA		I	33	20	11	3	0
#Criminal Justice	BSCJ	CRMJ	CRJB	CRMJ	I	98	96	57	28	19
#Criminal Justice	BSCJ	CRMJ	CRJB		I			8	10	1
#Emergency Svcs Admin	ASPA	PAFF	PAFA	ESAA	I	0	2	0	0	0
#Health Svcs Mngmnt	BSHSM	HSM	HSMB		I	6	1	0	0	0
# Public Affairs	MPA	PAFF	MPAM		I			5	0	0
#Policy Analysis	MPA	PAFF	MPAM	POLM	I	4	5	3	1	0
#Pre-Criminal Justice, AS	ND	PCJA	PEAP		I	57	31	9	3	3
Pre-Health Systems Ad & Pol	NDG	PMGN	MPMP	HADM	I	0	0	0	0	0
Pre-Public Adm & Pol	NDG	PMGN	MPMP	PADM	I	0	0	0	0	0
#Pre-Policy Analysis MPA	NDG	PAFN	MPAP	POLM	I	0	0	0	0	0
#Pre-Public Affairs - AS	ND	PAPA	PEAP		I	4	2	0	0	0
#Public Administration	ASPA	PAFF	PAFA	PADA	I	1	3	0	0	0
#Public Affairs-Criminal Justice	ASPA	PAFF	PAFA	CRMJ	I	1	0	0	0	0
<i>DIVISION OF PUBLIC AND ENVIRONMENTAL AFFAIRS TOTAL</i>						<u>442</u>	<u>485</u>	<u>446</u>	<u>386</u>	<u>430</u>

**UNIT OF AFFILIATED PROGRAMS (UA)**

**Academic Counseling and Career Services (ACCS)**

Business-Conditional	ND	BCND	INDN		I	89	93	108	155	45
Exploring Agriculture	ND	XAGR	PEXN		P			2	4	5
Exploring Anthropology	ND	XANT	IEXN		I			2	1	2
Exploring Arch Engr Tech	ND	XARE	PEXN		P			6	6	0
Exploring Art Education	ND	XFAE	IEXN		I			3	3	3
Exploring AS Undecided-IU	ND	XASI	IEXN		I			4	6	8
Exploring AS Undecided-PU	ND	XASP	PEXN		P			2	3	3
Exploring Biology	ND	XBIO	PEXN		P			14	22	22
Exploring Business	ND	XPBS	IEXN		I			78	103	118
Exploring Chemistry	ND	XCHM	PEXN		P			3	3	2
Exploring Civil Engr Tech	ND	XCVT	PEXN		P			1	2	2
Exploring Communication	ND	XCOM	PEXN		P			6	16	14
Exploring Comp Engr Tech	ND	XCPT	PEXN		P			1	1	2
Exploring Computer Science	ND	XCS	PEXN		P			6	13	10
Exploring Dental Assisting	ND	XDNA	IEXN		I			3	2	6
Exploring Dental Hygiene	ND	XDHY	IEXN		I			16	21	27
Exploring Dental Lab Tech	ND	XDLT	IEXN		I			1	0	1
Exploring Early Childhood Educ	ND	XECE	IEXN		I			4	5	7
Exploring Electrical Engr Tech	ND	XEET	PEXN		P			2	4	3
Exploring Elementary Educ	ND	XELE	IEXN		I			49	50	55
Exploring Engineering	ND	XENR	PEXN		P			16	26	22
Exploring English	ND	XENG	IEXN		I			3	5	8
Exploring English Teaching	ND	XENT	IEXN		I			1	0	0
Exploring Fine Arts	ND	XFIN	IEXN		I			4	4	5
Exploring French	ND	XFRE	IEXN		I				1	0
Exploring General Studies	ND	XGNS	IEXN		I			7	8	4
Exploring German	ND	XGER	IEXN		I			1	0	0
Exploring Health, P.E. & Rec	ND	XHPR	IEXN		I				2	4
Exploring HS Undecided-IU	ND	XHSI	IEXN		I			6	12	7
Exploring HS Undecided-PU	ND	XHSP	PEXN		P			1	4	9
Exploring History	ND	XHIS	IEXN		I			3	6	3
Exploring Hospitality Mgmt	ND	XHTM	PEXN		P			4	11	5

**TABLE 16**  
**STUDENTS BY ACADEMIC UNIT, MAJOR AND PROGRAMS**  
**FALL SEMESTERS, 2003-2007, continued**

Description	Degr	Major	Prog	Conct	Univ	2003	2004	2005	2006	2007
Exploring Human Services	ND	XHSV	PEXN		P					4
Exploring Indust. Eng. Tech.	ND	XIET	PEXN		P					1
Exploring Information Systems	ND	XINS	PEXN		P			2	0	2
Exploring Interior Design	ND	XINT	PEXN		P			4	5	14
Exploring Journalism	ND	XJOU	IEXN		I			3	4	2
Exploring Labor Studies	ND	XLST	IEXN		I			1	0	0
Exploring Mathematics	ND	XMA	PEXN		P				1	1
Exploring Math Teaching	ND	XMTT	PEXN		P			3	2	2
Exploring Mech Engr Tech	ND	XMET	PEXN		P			5	4	7
Exploring Music	ND	XMUS	IEXN		I			7	4	10
Exploring Nursing	ND	XNUR	PEXN		P			56	76	98
Exploring Org Leadership & Spv	ND	XOLS	PEXN		P			3	5	7
Exploring Physics	ND	XPHY	PEXN		P			1	2	0
Exploring Political Science	ND	XPOL	IEXN		I			1	6	5
Exploring Pre-Forestry	ND	XPFR	PEXN		P					3
Exploring Pre-Occupational Therapy	ND	XOCT	IEXN		I				1	0
Exploring Pre-Pharmacy	ND	XPPH	PEXN		P			4	4	5
Exploring Pre-Radiation Therapy	ND	XPRT	IEXN		I				1	0
Exploring Pre-Respiratory Therapy	ND	XPRS	IEXN		I					1
Exploring Pre-Vet Science	ND	XPVT	PEXN		P			3	5	8
Exploring Pre-Vet Tech	ND	XVTT	PEXN		P					1
Exploring Psychology	ND	XPSY	PEXN		P			19	29	21
Exploring Public Affairs	ND	XPAF	IEXN		I			31	41	25
Exploring Radiography	ND	XRAD	IEXN		I			14	16	16
Exploring Secondary Educ	ND	XSED	IEXN		I			11	11	19
Exploring Sociology	ND	XSOC	IEXN		I			1	2	1
Exploring Spanish	ND	XSPA	IEXN		I				3	2
Exploring Spanish Teaching	ND	XSPT	IEXN		I			1	0	0
Exploring Speech & Hearing	ND	XSPH	PEXN		P			2	3	3
Exploring Theatre	ND	XTHR	PEXN		P			6	0	6
Exploring Undecided IU	ND	XUNI	IEXN		I			46	57	48
Exploring Undecided PU	ND	XUNP	PEXN		P			70	83	76
Exploring VPA Undecided	ND	XVPA	IEXN		I					2
Exploring Visual Comm & Design	ND	XVCD	IEXN		I			11	18	19
Exploring Women's Studies (IU)	ND	XWSI	IEXN		I					1
Guided Studies	ND	GST	INDN		I	375	306	64	5	2
Guided Studies	ND	GST	PURN		P	273	252	49	8	3
Industrial Tech.-Transfer	ND	PITT	UAPX		P	0	0	0	0	0
Management-Transfer	ND	PMGT	UAPX		P	3	2	2	0	1
Non-Degree Bus. Assoc.	ND	NDBA	INDN		I	0	0	0	0	0
Non-Degree Business, Bach.	ND	NDBB	INDN		I	0	0	0	0	0
Non-Degree No Option	ND	NDN	INDN		I	47	39	45	28	35
Non-Degree No Option	ND	NDN	PURN		P	65	66	43	39	38
Pre-Business Assoc.	ND	PBSA	INDP		I	65	47	52	38	24
Pre-Business Bach.	ND	PBSB	INDP		I	342	383	424	313	173
Pre-Education	ND	PEDU	INDP		I	82	64	48	46	30
Pre-Org. Leadership & SPV	ND	OLSP	PURP		P	22	20	20	6	3
Undecided Exploratory	ND	UND	INDN		I	432	414	365	293	240
Undecided Exploratory	ND	UND	PURN		P	535	618	532	376	354
ACCS Total						2,330	2,304	2,306	2,034	1,715

**Conditional Admissions (CNAD)**

**TABLE 16**  
**STUDENTS BY ACADEMIC UNIT, MAJOR AND PROGRAMS**  
**FALL SEMESTERS, 2003-2007, continued**

Description	Degr	Major	Prog	Conct	Univ	2003	2004	2005	2006	2007
Non-Degree Conditional	ND	CND	INDN		I	69	74	93	84	216
Non-Degree Conditional	ND	CND	PURN		P	<u>163</u>	<u>109</u>	<u>144</u>	<u>137</u>	<u>143</u>
CNAD Total						232	183	237	221	359
<i>UNIT OF AFFILIATED PROGRAMS TOTAL</i>						2,562	2,487	2,543	2,255	2,074
<b>COLLEGE OF VISUAL AND PERFORMING ARTS (VP)</b>										
<b>Visual and Performing Arts Special Students (VPAS)</b>										
Undecided Fine & Per. Arts	ND	VPAU	VPAN		I	<u>0</u>	<u>0</u>	<u>0</u>	<u>1</u>	<u>3</u>
VPAS Total						0	0	0	1	3
<b>Fine Arts (FINA)</b>										
F.A., Ceramics	BFA	FINA	FARB	CRMC	I				2	0
F.A., Crafts	BFA	FINA	FARB	CRFT	I	18	18	12	3	1
F.A., Drawing	BFA	FINA	FARB	DRAW	I	5	7	6	2	1
F.A., Metals	BFA	FINA	FARB	METL	I				4	2
F.A., Painting	BFA	FINA	FARB	PNTG	I	14	17	14	8	5
F.A., Printmaking	BFA	FINA	FARB	PRNT	I	2	2	1	0	2
F.A., Sculpture	BFA	FINA	FARB	SCLP	I	10	11	8	4	4
Fine Arts	BA	FINA	FAAB		I	2	3	6	10	17
Fine Arts, Undeclared	BFA	FINA	FARB		I				1	1
Art Education	BA	FINE	FAAB		I	13	31	43	61	73
Fine Arts, Pre-BFA	ND	FINA	FARP		I	45	37	50	56	53
Fine Arts, Special	ND	FINA	FARN		I	<u>0</u>	<u>0</u>	<u>0</u>	<u>0</u>	<u>0</u>
VART Total						109	126	140	151	159
<b>Music (MUS)</b>										
Choral Teaching	BME	MUED	MMEB	TCHC	I	14	9	17	14	17
Instrumental Teaching	BME	MUED	MMEB	TCHI	I	10	16	26	19	23
Music and an Outside Field	BSM	MUS	MUSB		I	14	20	27	23	22
Music Therapy	BSMT	MTHP	MTHB		I	15	21	23	21	23
Music Therapy Equiv.	ND	MTE	MTHN		I	0	0	6	4	0
Non-Degree Music	ND	MUSN	MUSN		I	0	0	0	0	2
Music	BM	MUS	MBMB		I			3	4	1
Music, Undeclared	BME	MUED	MMEB		I				7	5
Orchestral Inst.	BM	MUS	MBMB	ORCH	I	6	2	2	3	0
Piano	BM	MUS	MBMB	PIAN	I	2	1	1	2	1
Piano Accompanying	BM	MUS	MBMB	PIAC	I	0	0	0	0	0
Piano Pedagogy, Cert.	CERT	MPPC	MPPC		I	0	0	0	0	0
Pre-Music	ND	MUS	MUSP		I	39	47	32	29	35
Pre-Music Therapy	ND	MTHP	MTHP		I	0	0	0	0	0
Teaching Area	BME	MUED	MMEB	TCHA	I	3	4	1	1	2
Undecided Music	ND	UND	MUSN		I	1	0	0	0	0
Voice	BM	MUS	MBMB	VOIC	I	<u>4</u>	<u>6</u>	<u>6</u>	<u>8</u>	<u>6</u>
MUS Total						108	126	144	135	137
<b>Theatre (THTR)</b>										
Theatre	BA	THTR	THTB		P	36	32	23	39	48
Theatre-Directing	BA	THTR	THTB	DRCT	P				1	0
Theatre-Special	ND	THTS	THTN		P	0	0	0	0	0
Theatre Teaching	BA	THTT	THTB		P	<u>3</u>	<u>2</u>	<u>0</u>	<u>2</u>	<u>0</u>
THTR Total						39	34	23	42	48
<b>Visual Communication and Design (VCD)</b>										
Commercial Art	ASCA	COMA	COMA		I	35	30	34	44	32
F.A., Computer Art	BFA	VCD	VCDB	CMPA	I	28	42	45	45	45
F.A., Graphic Design	BFA	VCD	VCDB	GRPH	I	106	139	139	119	135

**TABLE 16**  
**STUDENTS BY ACADEMIC UNIT, MAJOR AND PROGRAMS**  
**FALL SEMESTERS, 2003-2007, continued**

Description	Degr	Major	Prog	Conct	Univ	2003	2004	2005	2006	2007
F.A., Photography	BFA	VCD	VCDB	PHOT	I	21	36	34	49	36
F.A., VCD Undeclared Conct	BFA	VCD	VCDB		I	<u>190</u>	<u>247</u>	<u>10</u>	<u>21</u>	<u>21</u>
<i>COLLEGE OF VISUAL AND PERFORMING ARTS TOTAL</i>						446	533	569	607	616
<i>IPFW TOTAL</i>						<i>11,806</i>	<i>11,810</i>	<i>11,795</i>	<i>11,672</i>	<i>11,943</i>

# Currently Closed to New Students

**TABLE 17**  
**SUMMER SESSION ENROLLMENT**  
**BY CLASS STANDING and BY RESIDENCY**  
**SUMMER SESSIONS, 2006 AND 2007**

<u>Class Standing</u>	-----2006-----			-----2007-----		
	<u>Summer 1</u>	<u>Summer 2</u>	<u>Total</u>	<u>Summer 1</u>	<u>Summer 2</u>	<u>Total</u>
Freshman	816	618	1,434	703	500	1,203
Sophomore	753	422	1,175	766	400	1,166
Junior	481	292	773	434	300	734
Senior	791	503	1,294	800	473	1,273
Undergraduate, Non-Degree	182	165	347	162	135	297
Graduate	294	310	604	344	361	705
Graduate, Non-Degree	<u>46</u>	<u>127</u>	<u>173</u>	<u>48</u>	<u>139</u>	<u>187</u>
TOTAL	3,363	2,437	5,800	3,257	2,308	5,565
Undergraduate, Resident	2,895	1,895	4,790	2,737	1,704	4,441
Undergraduate, Non-Resident	128	105	233	128	104	232
Graduate, Resident	333	427	760	380	486	866
Graduate, Non-Resident	<u>7</u>	<u>10</u>	<u>17</u>	<u>12</u>	<u>14</u>	<u>26</u>
TOTAL	3,363	2,437	5,800	3,257	2,308	5,565



**TABLE 18**  
**ENROLLMENT BY SEX AND STATUS**  
**FALL SEMESTERS, 1980-2007**

<u>Year</u>	<u>Full-Time Men</u>	<u>Full-Time Women</u>	<u>Part-Time Men</u>	<u>Part-Time Women</u>	<u>Total Men</u>	<u>Total Women</u>	<u>Married %</u>	<u>Single %</u>	<u>Total</u>
1980	1,932	1,935	2,711	3,604	4,643	5,539	38.0%	62.0%	10,182
1981	2,009	2,035	2,761	3,578	4,770	5,613	37.7%	62.3%	10,383
1982	2,123	2,006	2,609	3,420	4,732	5,426	37.4%	62.6%	10,158
1983	2,176	2,119	2,657	3,524	4,833	5,643	37.3%	62.7%	10,476
1984	1,972	1,989	2,710	3,514	4,682	5,503	37.4%	62.6%	10,185
1985	1,811	1,931	2,905	3,687	4,716	5,618	38.0%	62.0%	10,334
1986	1,730	1,884	2,814	3,754	4,544	5,638	38.5%	61.5%	10,182
1987	1,801	1,957	2,946	3,877	4,747	5,834	39.1%	60.9%	10,581
1988	1,906	2,170	3,013	3,984	4,919	6,154	38.2%	61.8%	11,073
1989	2,019	2,336	3,129	3,938	5,148	6,274	36.8%	63.2%	11,422
1990	2,135	2,489	3,125	4,130	5,260	6,619	36.4%	63.6%	11,879
1991	2,287	2,699	3,048	4,043	5,335	6,742	35.3%	64.7%	12,077
1992	2,312	2,754	2,921	4,103	5,233	6,857	34.8%	65.2%	12,090
1993	2,261	2,768	2,722	3,950	4,983	6,718	34.1%	65.9%	11,701
1994	2,288	2,775	2,698	3,752	4,986	6,527	32.8%	67.2%	11,513
1995	2,113	2,669	2,678	3,551	4,791	6,220	30.1%	69.9%	11,011
1996	2,178	2,703	2,487	3,381	4,665	6,084	28.5%	71.5%	10,749
1997	2,147	2,732	2,504	3,286	4,651	6,018	26.7%	73.3%	10,669
1998	2,289	2,804	2,432	3,128	4,721	5,932	24.1%	75.9%	10,653
1999	2,314	2,899	2,310	3,033	4,624	5,932	21.4%	78.6%	10,556
2000	2,275	3,031	2,245	2,981	4,520	6,012	17.8%	82.2%	10,532
2001	2,540	3,246	2,229	3,114	4,769	6,360	14.5%	85.5%	11,129
2002	2,703	3,577	2,223	3,254	4,926	6,831	13.2%	86.8%	11,757
2003	2,764	3,668	2,162	3,212	4,926	6,880	13.0%	87.0%	11,806
2004	2,963	3,775	2,007	3,065	4,970	6,840	12.6%	87.4%	11,810
2005	3,071	3,845	1,989	2,890	5,060	6,735	11.3%	88.7%	11,795
2006	3,185	3,899	1,865	2,723	5,050	6,622	10.8%	89.2%	11,672
2007	3,269	4,138	1,874	2,662	5,143	6,800	10.3%	89.7%	11,943

**TABLE 19**  
**ENROLLMENT HISTORY**  
**1969-70 through 2007-08**

<u>Year</u>	<u>Fall</u>	<u>Spring</u>	<u>Summer I</u>	<u>Summer II</u>	<u>Summer Total</u>	<u>TOTAL</u>
1969-70	5,984	5,619			3,062	14,665
1970-71	6,435	6,385			3,238	16,058
1971-72	7,156	6,896			3,097	17,149
1972-73	7,443	7,391			3,443	18,277
1973-74	7,821	7,441			3,592	18,854
1974-75	8,128	7,878			3,736	19,742
1975-76	8,961	8,418			3,676	21,055
1976-77	9,193	8,660	2,119	2,017	4,136	21,989
1977-78	9,357	8,377	2,246	2,045	4,291	22,025
1978-79	9,015	8,191	2,127	2,073	4,200	21,406
1979-80	9,191	8,689	2,461	2,278	4,739	22,619
1980-81	10,182	9,465	2,794	2,202	4,996	24,643
1981-82	10,383	9,572	2,573	2,292	4,865	24,820
1982-83	10,158	9,746	2,525	2,380	4,905	24,809
1983-84	10,476	9,628	2,406	2,267	4,673	24,777
1984-85	10,185	9,380	2,474	2,270	4,744	24,309
1985-86	10,334	9,334	2,416	2,313	4,729	24,397
1986-87	10,182	9,626	2,548	2,189	4,737	24,545
1987-88	10,581	10,086	2,908	2,378	5,286	25,953
1988-89	11,073	10,340	2,846	2,460	5,306	26,719
1989-90	11,422	10,751	3,084	2,389	5,473	27,646
1990-91	11,879	11,092	2,954	2,614	5,568	28,539
1991-92	12,077	11,216	3,133	2,524	5,657	28,950
1992-93	12,090	11,267	3,030	2,561	5,591	28,948
1993-94	11,701	10,934	2,979	2,270	5,249	27,884
1994-95	11,513	10,550	3,010	2,186	5,196	27,259
1995-96	11,011	10,120	2,956	2,088	5,044	26,175
1996-97	10,749	10,077	2,910	2,314	5,224	26,050
1997-98	10,669	9,920	3,121	2,058	5,179	25,768
1998-99	10,653	9,897	3,193	2,140	5,333	25,883
1999-2000	10,556	9,793	3,119	2,133	5,252	25,601
2000-01	10,532	9,841	3,378	2,351	5,729	26,102
2001-02	11,129	10,625	3,495	2,610	6,105	27,859
2002-03	11,757	11,056	3,646	2,537	6,183	28,996
2003-04	11,806	11,126	3,440	2,582	6,022	28,954
2004-05	11,810	11,072	3,294	2,460	5,754	28,636
2005-06	11,795	10,740	3,363	2,437	5,800	28,335
2006-07	11,672	10,963	3,257	2,308	5,565	28,200
2007-08	11,943					

**TABLE 20**  
**CREDIT HOUR HISTORY**  
**1969-70 through 2007-08**

<u>Year</u>	<u>Fall</u>	<u>Spring</u>	<u>Summer I</u>	<u>Summer II</u>	<u>Summer Total</u>	<u>TOTAL</u>
1969-70	56,617	52,456			13,182	122,255
1970-71	63,081	59,603			14,347	137,031
1971-72	68,546	63,258			14,004	145,808
1972-73	69,201	65,048			15,163	149,412
1973-74	71,269	66,103			17,730	155,102
1974-75	72,476	70,223			18,017	160,716
1975-76	81,680	76,693			18,271	176,644
1976-77	81,219	75,194	8,069	8,914	16,983	173,396
1977-78	81,820	72,283	8,465	8,584	17,049	171,152
1978-79	76,640	67,603	7,840	8,350	16,190	160,433
1979-80	77,653	72,980	9,192	9,282	18,474	169,107
1980-81	86,440	80,318	10,349	8,938	19,287	186,045
1981-82	88,580	81,790	9,569	9,277	18,846	189,216
1982-83	88,066	83,361	9,252	9,321	18,573	190,000
1983-84	92,070	83,132	8,707	8,729	17,436	192,638
1984-85	86,699	77,324	8,896	8,651	17,547	181,570
1985-86	84,599	76,010	8,488	8,877	17,365	177,974
1986-87	82,895	76,542	9,066	8,058	17,124	176,561
1987-88	85,976	79,910	10,385	8,754	19,139	185,025
1988-89	90,299	83,480	9,983	8,996	18,979	192,758
1989-90	94,661	88,002	10,885	8,594	19,479	202,142
1990-91	99,568	91,892	10,459	9,398	19,857	211,317
1991-92	103,404	94,552	11,015	9,050	20,065	218,021
1992-93	103,961	94,896	10,754	9,066	19,820	218,677
1993-94	102,142	93,770	10,612	7,956	18,568	214,480
1994-95	100,735	90,168	10,643	7,679	18,322	209,225
1995-96	96,348	87,435	10,670	7,354	18,024	201,807
1996-97	95,812	87,263	10,580	8,140	18,720	201,795
1997-98	95,509	87,411	11,501	7,424	18,925	201,845
1998-99	97,569	89,264	11,857	7,751	19,608	206,441
1999-00	98,500	89,337	11,594	7,787	19,381	207,218
2000-01	99,775	91,630	12,662	8,573	21,235	212,640
2001-02	107,751	101,249	13,062	9,697	22,759	231,759
2002-03	116,126	105,788	14,112	9,607	23,719	245,633
2003-04	117,833	108,236	13,211	9,686	22,897	248,966
2004-05	120,114	110,120	12,583	9,315	21,898	252,132
2005-06	121,470	108,802	13,280	8,944	22,224	252,496
2006-07	122,818	112,117	13,061	8,716	21,777	256,712
2007-08	126,230					

**TABLE 21**  
**FULL-TIME EQUIVALENT ENROLLMENT**  
**FALL SEMESTERS, 1977 - 2007**

<u>FALL</u>	UNDERGRADUATE		GRADUATE		TOTAL
	<u>HOURS</u>	<u>FTE</u>	<u>HOURS</u>	<u>FTE</u>	<u>FTE</u>
1977	75683	5,046	6,137	511	5,557
1978	71463	4,764	5,177	431	5,195
1979	72354	4,824	5,299	442	5,266
1980	80866	5,391	5,574	465	5,856
1981	83693	5,580	4,887	407	5,987
1982	83966	5,598	4,100	342	5,940
1983	88208	5,881	3,862	322	6,203
1984	83089	5,539	3,610	301	5,840
1985	80033	5,336	4,566	381	5,717
1986	78693	5,246	4,202	350	5,596
1987	81676	5,445	4,300	358	5,803
1988	85998	5,733	4,301	358	6,091
1989	90577	6,038	4,084	340	6,378
1990	95772	6,385	3,796	316	6,701
1991	99686	6,646	3,718	310	6,956
1992	100378	6,692	3,583	299	6,991
1993	98614	6,574	3,528	294	6,868
1994	97123	6,475	3,612	301	6,776
1995	92573	6,172	3,775	315	6,487
1996	92028	6,135	3,784	315	6,450
1997	91726	6,115	3,793	316	6,431
1998	93765	6,251	3,804	317	6,568
1999	94810	6,321	3,690	308	6,629
2000	96287	6,419	3,488	291	6,710
2001	103689	6,913	4,062	339	7,252
2002	111,700	7,447	4,426	369	7,816
2003	113,999	7,600	3,834	320	7,920
2004	116,423	7,762	3,691	308	8,070
2005	117,332	7,822	4,138	345	8,167
2006	118,573	7,905	4,245	354	8,259
2007	121,824	8,122	4,406	367	8,489

**TABLE 22**  
**CONTINUING EDUCATION ENROLLMENTS AND COURSES OFFERED**  
**1984-2007**

<u>YEAR</u>	<u>STUDENT ENROLLMENT</u>		<u>COURSES OFFERED</u>	
	<u>Non-credit</u>	<u>Credit</u>	<u>Non-credit</u>	<u>Credit</u>
1984-85	8,242	693	458	27
1985-86	8,011	528	463	16
1986-87	10,772	611	485	14
1987-88	9,207	855	527	31
1988-89	11,363	1,019	557	49
1989-90	12,033	3,661*	536	148*
1990-91	12,828	3,956*	585	171*
1991-92	11,352	4,381*	612	171*
1992-93	10,484	3,901*	522	158*
1993-94	9,587	1,546	503	90
1994-95	9,476	1,593	514	111
1995-96	9,496	2,005	510	124
1996-97	8,577	2,987	383	148
1997-98	8,940	2,699	465	178
1998-99	8,454	3,083	598	195
1999-00	8,002	3,124	602	241
2000-01	8,829	3,658	590	275
2001-02	8,022	5,773	614	371
2002-03	9,355	9,920	781	483
2003-04	7,121	11,263	695	541
2004-05	7,510	12,782	668	584
2005-06	7,747	14,746	691	668
2006-07	8,909	16,116	801	798

\*Weekend College credit enrollments and courses were included in the years 1989-93. 1999-00 through 2001-02 statistics updated by Continuing Education. Weekend College included beginning in 2002-03.

**TABLE 23**  
**CERTIFICATES AND DEGREES CONFERRED**  
**SINCE JUNE, 1968**

<u>Year Ending</u>	<u>Certificates*</u>	<u>Associate</u>	<u>Bachelor's</u>	<u>Master's</u>	<u>Total</u>
June, 1968	0	137	126	9	272
June, 1969	0	199	209	8	416
June, 1970	0	261	307	101	669
June, 1971	0	247	347	152	746
June, 1972	1	334	407	203	945
June, 1973	5	364	430	208	1,007
June, 1974	0	383	417	302	1,102
June, 1975	13	426	456	293	1,188
June, 1976	0	444	427	277	1,148
June, 1977	0	438	473	321	1,232
June, 1978	0	424	457	322	1,203
June, 1979	11	392	448	308	1,159
June, 1980	24	502	439	246	1,211
June, 1981	32	491	475	274	1,272
June, 1982	35	623	502	288	1,448
June, 1983	33	598	499	278	1,408
June, 1984	32	668	485	199	1,384
June, 1985	38	661	512	199	1,410
June, 1986	37	569	571	188	1,365
June, 1987	41	530	525	216	1,312
June, 1988	49	484	542	217	1,292
June, 1989	37	494	586	267	1,384
June, 1990	68	526	669	275	1,538
June, 1991	69	574	679	145	1,467
June, 1992	84	559	717	147	1,507
June, 1993	79	557	704	162	1,502
June, 1994	113	530	747	170	1,560
June, 1995	96	508	755	146	1,505
June, 1996	88	473	802	181	1,544
June, 1997	86	470	687	189	1,432
June, 1998	84	470	766	187	1,507
June, 1999	82	444	765	200	1,491
June, 2000	91	444	782	205	1,522
June, 2001	75	435	713	173	1,396
June, 2002	58	490	831	181	1,560
June, 2003	70	525	854	213	1,662
June, 2004	81	566	869	201	1,717
June, 2005	83	572	907	163	1,725
June, 2006	113	522	1025	213	1,873
June, 2007	<u>88</u>	<u>479</u>	<u>995</u>	<u>187</u>	<u>1,749</u>
TOTAL	1,896	18,813	23,907	8,214	52,830

\* Certificates were awarded prior to 1980, but accurate counts are not available.

**TABLE 24**  
**RESIDENCE OF ALUMNI\* As of November, 2007**

<u>Location</u>	<u>Total</u>	<u>Location</u>	<u>Total</u>
INDIANA	31,860	Montana	29
Alabama	72	Nebraska	38
Alaska	13	Nevada	72
Arizona	387	New Hampshire	28
Arkansas	37	New Jersey	68
California	527	New Mexico	61
Colorado	243	New York	122
Connecticut	65	North Carolina	331
Delaware	13	North Dakota	7
District of Columbia	3	Ohio	1,375
Florida	1012	Oklahoma	50
Georgia	306	Oregon	74
Hawaii	20	Pennsylvania	167
Idaho	19	Rhode Island	8
Illinois	628	South Carolina	156
Iowa	55	South Dakota	9
Kansas	63	Tennessee	268
Kentucky	189	Texas	584
Louisiana	29	Utah	31
Maine	17	Vermont	20
Maryland	83	Virginia	218
Massachusetts	121	Washington	130
Michigan	803	West Virginia	24
Minnesota	111	Wisconsin	174
Mississippi	24	Wyoming	14
Missouri	182	Overseas Military	12
		U.S. SUBTOTAL	40,952
		Foreign Nations/U.S. Territories	<u>72</u>
		TOTAL	41,024

\* Includes only those living alumni for whom valid addresses are known.

**PART III**  
**FACULTY AND STAFF**



**TABLE 25**  
**INSTITUTIONAL STAFF DATA COMPARISON**  
**FALL SEMESTERS, 2003 - 2007**

	<u>2003</u>	<u>2004</u>	<u>2005</u>	<u>2006</u>	<u>2007</u>
<b>FACULTY</b>					
<b>A. Regularly Appointed Teaching Faculty by Rank</b>					
Professor	63	67	64	70	69
Associate Professor	119	117	117	118	116
Assistant Professor	115	128	127	133	132
Instructor	29	23	26	17	15
Lecturer	<u>30</u>	<u>30</u>	<u>40</u>	<u>45</u>	<u>46</u>
<b>TOTAL</b>	356	365	374	383	378
<b>B. Associate Faculty</b>					
Graduate Assistants/Aides	65	72	56	80	72
<b>ADMINISTRATIVE</b>	251	272	268	281	281
<b>CLERICAL</b>					
	182 <sup>16</sup>	187	200	197	204
<b>SERVICE</b>					
	<u>177<sup>16</sup></u>	<u>165</u>	<u>198</u>	<u>201</u>	<u>217</u>
<b>TOTAL</b>	1,382	1,445	1,490	1,557	1,549

Notes:

Faculty Counts

1. Include librarians who hold faculty rank
2. Exclude administrators who hold faculty rank and have administrative FTE greater than .50 in a school or administrative office
3. Exclude open positions approved for recruitment
4. Include faculty on leave and visiting faculty
5. Exclude undergraduate assistants and temporary part-time staff and adjunct faculty and visiting scholars
6. Exclude Medical Education
7. Include Graduate Assistants beginning with 2003 and includes post-doctoral research assistants
8. 2005 revised in 2006 to include Labor Studies
9. Exclude Continuing Studies Non-credit faculty until 2003

Administrative Counts

8. Include faculty who have .50 or greater FTE administrative responsibilities in a school or administrative office
9. Include positions less than .50 FTE
10. Include positions funded by external sources
11. Exclude vacant positions
12. Exclude Medical Education until 2003

Clerical/Service Counts

13. Include positions funded by external sources
14. Exclude vacant positions
15. Exclude Medical Education until 2003
16. Include temporary staff beginning in 2003

**TABLE 26**  
**REGULAR MINORITY EMPLOYEES**  
**FALL SEMESTER, 2007**

<u>Category</u>	<u>Total Regular Employees</u>	<u>Total Minority Employees</u>	<u>Percent Minority</u>
Faculty	378	62	16.4%
Administration	281	22	7.8%
Clerical	204	13	6.4%
Service	<u>217</u>	<u>28</u>	<u>12.9%</u>
TOTAL	1080	125	11.6%

**TABLE 27**  
**MINORITY EMPLOYEES BY ETHNIC CATEGORY**  
**FALL SEMESTER, 2007**

	American Indian/Alaskan Native			Asian or Pacific Islander			Black			Hispanic			Multiracial			Total		
	<u>M</u>	<u>F</u>	<u>TOT</u>	<u>M</u>	<u>F</u>	<u>TOT</u>	<u>M</u>	<u>F</u>	<u>TOT</u>	<u>M</u>	<u>F</u>	<u>TOT</u>	<u>M</u>	<u>F</u>	<u>TOT</u>	<u>M</u>	<u>F</u>	<u>TOT</u>
Faculty	2	1	3	21	16	37	7	4	11	6	5	11	0	0	0	36	26	62
Admin.	2	1	3	3	0	3	3	8	11	1	4	5	0	0	0	9	13	22
Clerical	0	3	3	0	0	0	2	6	8	0	2	2	0	0	0	2	11	13
Service	<u>2</u>	<u>0</u>	<u>2</u>	<u>6</u>	<u>4</u>	<u>10</u>	<u>9</u>	<u>5</u>	<u>14</u>	<u>0</u>	<u>2</u>	<u>2</u>	<u>0</u>	<u>0</u>	<u>0</u>	<u>17</u>	<u>11</u>	<u>28</u>
TOTAL	6	5	11	30	20	50	21	23	44	7	13	20	0	0	0	64	61	125

**TABLE 28**  
**REGULAR EMPLOYEES BY GENDER**  
**FALL SEMESTER, 2007**

<u>Category</u>	<u>Male</u>	<u>Female</u>	<u>Total</u>	<u>% Female</u>
Professor	52	17	69	24.6%
Associate Professor	69	47	116	40.5%
Assistant Professor	74	58	132	43.9%
Instructor & Lecturer	<u>28</u>	<u>33</u>	<u>61</u>	<u>54.1%</u>
FACULTY	223	155	378	41.0%
ADMINISTRATION	126	155	281	55.2%
CLERICAL	11	193	204	94.6%
SERVICE	<u>141</u>	<u>76</u>	<u>217</u>	<u>35.0%</u>
TOTAL	501	579	1080	53.6%

**TABLE 29**  
**FULL-TIME FACULTY SALARIES BY RANK**  
**2003 - 2007**

Category	Average <u>2003-04</u>	Average <u>2004-05</u>	Average <u>2005-06</u>	Average <u>2006-07</u>	Average <u>2007-08</u>
Professor	\$68,070	\$70,188	\$73,377	\$75,974	\$75,376
Associate Professor	\$55,533	\$56,794	\$58,287	\$59,488	\$58,031
Assistant Professor	\$47,839	\$49,093	\$50,862	\$52,299	\$52,379
Instructor	\$37,767	\$36,579	\$38,473	\$40,747	\$43,118
Lecturer	\$34,383	\$36,039	\$35,993	\$37,413	\$40,298

Salaries do not include fringe benefits. Averages do not include deans, librarians, or administrative staff with faculty rank. Full-time faculty is defined as any faculty holding one of the above ranks with 0.5 or greater FTE. All positions equated to 1.0 FTE for salary computation. All salaries are stated as 10-month salaries. Adjustments have been made to reflect computation differences in converting IU or Purdue salaries from 12 to 10-month basis.

**TABLE 30**  
**SABBATICAL LEAVES BY DEPARTMENT/DIVISION**  
**by Academic Year, 2003-2007**

2003-04	Economics	1	1
	Engineering	1	1
	Geosciences	1	0
	Mathematical Sciences	2	1
	Modern Foreign Languages	1	0
	Organizational Leadership & Supervision	0	1
	Political Science	1	0
	Public & Environmental Affairs	0	1
	Theatre	<u>1</u>	<u>0</u>
TOTAL	8	5	
2004-05	Accounting & Finance	0	1
	Biology	0	1
	Chemistry	1	0
	Civil & Architectural Engineering Technology	0	1
	Computer Science	1	1
	Economics	1	1
	English & Linguistics	2.5	0.5
	Fine Arts	0	1
	International Language & Culture Studies	1	0
	Library	1	0
	Management & Marketing	0	1
	Mathematical Sciences	1	0
	Music	0	2
	Nursing	2	1
	Organizational Leadership & Supervision	1	1
	Physics	0	1
	Psychology	1	1
	Sociology & Anthropology	1	1
	Visual Arts	<u>0.5</u>	<u>0.5</u>
	TOTAL	14	15
2005-06	Biology	1	0
	Chemistry	0	1
	Civil & Architectural Engineering Technology	0	1
	Computer Science	1	0
	Engineering	0	1
	English & Linguistics	2	2
	History	0	1
	International Language & Culture Studies	1	0
	Library	0.5	0.5
	Management & Marketing	0	1
	Mathematical Sciences	1	0
	Nursing	1	1
	Psychology	1	1
	Public & Environmental Affairs	0	1

**TABLE 30**  
**SABBATICAL LEAVES BY DEPARTMENT/DIVISION**  
**by Academic Year, 2003-2007**

<u>Year of Leave</u>	<u>Department/Division</u>	<u>Fall</u>	<u>Spring</u>
2005-06 continued	Sociology & Anthropology	1	0
	Visual Arts	<u>0</u>	<u>1</u>
	TOTAL	9.5	11.5
2006-07	Accounting & Finance	1	0
	Biology	1	2
	Civil & Architectural Engineering Technology	0	1
	Communication	0	2
	Computer Science	1	0
	Economics	1	0
	Educational Studies	1	1
	Engineering	0	1
	History	2	2
	International Language & Culture Studies	1	0
	Library	1	1
	Mathematical Sciences	1	0
	Mechanical & Industrial Engineering Technology	1	0
	Nursing	2	2
	Organizational Leadership & Supervision	1	0
	Psychology	1	1
	Sociology & Anthropology	2	1
	Visual Arts	<u>0</u>	<u>2</u>
	TOTAL	17	16
	2007-08	Accounting & Finance	1
Biology		1	1
Communication		1	0
Computer Science		1	0
Consumer & Family Sciences		1	0
Dental Education		1	2
Educational Studies		1	0
English & Linguistics		2	2
Engineering		2	1
Geosciences		0	1
History		2	1
International Language & Culture Studies		1	0
Management & Marketing		0	1
Mathematical Sciences		0	3
Music		1	1
Philosophy		0	1
Psychology		0	1
Public & Environmental Affairs		<u>1</u>	<u>1</u>
TOTAL		16	17

**TABLE 31**  
**TENURED FACULTY\* BY DEPARTMENT/DIVISION**  
**FALL SEMESTER, 2007**

	Number of <u>Faculty*</u>	Number <u>Tenured</u>	Percent <u>Tenured</u>
<b>ARTS AND SCIENCES</b>			
Audiology and Speech Sciences	3	1	33%
Biology	17	11	65%
Chemistry	12	7	58%
Communication	12	7	58%
English and Linguistics	26	13	50%
Geosciences	5	3	60%
Gerontology	1	0	0%
History	9	5	56%
International Language & Culture Studies	11	2	18%
Mathematical Sciences	26	17	65%
Philosophy	10	4	40%
Physics	7	5	71%
Political Science	6	3	50%
Psychology	13	9	69%
Sociology and Anthropology	17	8	47%
Women's Studies	<u>1</u>	<u>0</u>	<u>0%</u>
TOTAL	176	95	54%
<b>BUSINESS AND MANAGEMENT SCIENCES</b>			
Accounting and Finance	9	5	56%
Economics	7	4	57%
Management and Marketing	<u>13</u>	<u>4</u>	<u>31%</u>
TOTAL	29	13	45%
<b>EDUCATION</b>			
Educational Studies	14	5	36%
Professional Studies	<u>10</u>	<u>3</u>	<u>30%</u>
TOTAL	24	8	33%
<b>ENGINEERING, TECHNOLOGY, AND COMPUTER SCIENCE</b>			
Computer Science	12	6	50%
Elec. and Computer Engineering Technology	6	3	50%
Engineering	15	9	60%
Manufacturing & Construction Engineering Tech & Interior Design	<u>14</u>	<u>8</u>	<u>57%</u>
TOTAL	47	26	55%
<b>HEALTH AND HUMAN SERVICES</b>			
Consumer and Family Sciences	2	2	100%
Dental Education	11	4	36%
Human Services	3	1	33%
Nursing	<u>15</u>	<u>7</u>	<u>47%</u>
TOTAL	31	14	45%

Table 31 continued on next page

**TABLE 31**  
**TENURED FACULTY\* BY DEPARTMENT/DIVISION, continued**  
**FALL SEMESTER, 2007**

	<u>Number of Faculty*</u>	<u>Number Tenured</u>	<u>Percent Tenured</u>
<b>LABOR STUDIES</b>			
Labor Studies	2	1	50%
<b>LIBRARY</b>			
Library	10	5	50%
<b>ORGANIZATIONAL LEADERSHIP AND SUPERVISION</b>			
Organizational Leadership and Supervision	8	6	75%
<b>PUBLIC AND ENVIRONMENTAL AFFAIRS</b>			
Public and Environmental Affairs	8	5	63%
<b>VISUAL AND PERFORMING ARTS</b>			
Music	22	6	27%
Theatre	7	2	29%
Visual Arts	<u>14</u>	<u>5</u>	<u>36%</u>
TOTAL	43	13	30%
<b>TOTAL CAMPUS</b>	<b>378</b>	<b>186</b>	<b>50%</b>

\* Excludes members of the administrative staff who hold faculty rank.

**TABLE 32**  
**TENURED FACULTY\* BY RANK AND SEX**  
**FALL SEMESTER, 2007**

		<u>Professor</u>	<u>Associate</u>	<u>Assistant</u>	<u>Instructor/ Lecturer</u>	<u>TOTAL</u>
MALE	TENURED	52	62	6	1	121
	NONTENURED	<u>0</u>	<u>7</u>	<u>68</u>	<u>27</u>	<u>102</u>
	TOTAL	52	69	74	28	223
	% of Males Tenured	100%	90%	8%	4%	54%
FEMALE	TENURED	16	42	3	4	65
	NONTENURED	<u>1</u>	<u>5</u>	<u>55</u>	<u>29</u>	<u>90</u>
	TOTAL	17	47	58	33	155
	% of Females Tenured	94%	89%	5%	12%	42%

\* Excludes members of the administrative staff who hold faculty rank.

**PART IV**  
**SOURCES OF SUPPORT**



**TABLE 33**  
**GENERAL FUNDS OPERATING BUDGET INCOME ESTIMATES**  
**2003-04 through 2007-08**

<u>Category</u>	<u>2003-04</u>	<u>2004-05</u>	<u>2005-06</u>	<u>2006-07</u>	<u>2007-08</u>
Student Fee Income	35,590,329	38,701,459	41,493,230	43,764,715	46,845,934
Facilities & Administrative Recovery	91,310	100,000	100,000	100,000	120,000
Interest Income	775,528	700,000	800,000	725,000	800,000
Other Income	<u>376,567</u>	<u>374,000</u>	<u>488,564</u>	<u>513,765</u>	<u>569,600</u>
<b>TOTAL</b>	<b>\$36,833,734</b>	<b>\$39,875,459</b>	<b>\$42,881,794</b>	<b>\$45,103,480</b>	<b>\$48,335,534</b>
<b>STATE APPROPRIATIONS</b>					
General Operating	\$32,383,338	\$34,152,780	\$34,961,547	\$36,043,187	\$37,116,951
Fee Replacement	<u>3,683,717</u>	<u>3,331,188</u>	<u>3,334,353</u>	<u>3,240,770</u>	<u>4,223,331</u>
<b>TOTAL</b>	<b>\$36,067,055</b>	<b>\$37,483,968</b>	<b>\$38,295,900</b>	<b>\$39,283,957</b>	<b>\$41,340,282</b>
<b>TOTAL FUNDS AVAILABLE</b>	<b>\$72,900,789</b>	<b>\$77,359,427</b>	<b>\$81,177,694</b>	<b>\$84,387,437</b>	<b>\$89,675,816</b>

**TABLE 34**  
**STATE APPROPRIATION\* AS A PERCENT**  
**OF BUDGETED GENERAL UNRESTRICTED FUNDS\*\***  
**1975-76 through 2007-08**

	<u>Total Income Budget</u>	<u>Budgeted State Appropriation</u>	<u>Percent of Total</u>	<u>Percent Change In State Appropriation</u>
1975-76***	\$10,633,598	\$7,780,210	73.2%	n.a.
1976-77	11,690,723	8,473,751	72.5%	8.9%
1977-78	12,585,626	8,768,897	69.7%	3.5%
1978-79	13,539,842	9,607,584	71.0%	9.6%
1979-80	14,213,160	10,779,305	75.8%	12.2%
1980-81	15,829,120	11,962,379	75.6%	11.0%
1981-82	18,411,187	13,463,390	73.1%	12.5%
1982-83	19,379,995	13,370,377	69.0%	- 0.7%
1983-84	20,881,207	14,275,459	68.4%	6.8%
1984-85	22,479,239	15,079,473	67.1%	5.6%
1985-86	24,284,306	16,853,082	69.4%	11.8%
1986-87	28,436,119	18,408,554	64.7%	9.2%
1987-88	29,644,275	18,864,730	63.6%	2.5%
1988-89	32,755,275	21,003,637	64.1%	11.3%
1989-90	35,278,893	22,412,220	63.5%	6.7%
1990-91	38,208,192	23,891,417	62.5%	6.6%
1991-92	42,431,873	26,520,748	62.5%	11.0%
1992-93	43,651,789	26,013,589	59.6%	- 1.9%
1993-94	45,345,131	26,888,666	59.3%	3.4%
1994-95	46,263,898	26,807,798	57.9%	- 0.3%
1995-96	47,966,014	27,551,784	57.4%	2.8%
1996-97	49,120,991	28,378,696	57.8%	3.0%
1997-98	51,982,158	30,205,479	58.1%	6.4%
1998-99	53,224,315	30,760,175	57.8%	1.8%
1999-2000	56,680,056	32,112,054	56.7%	4.4%
2000-01	59,419,950	33,665,568	56.7%	4.8%
2001-02	62,684,188	34,308,150	54.7%	1.9%
2002-03	67,526,791	34,530,384	51.1%	0.6%
2003-04	72,900,789	36,067,055	49.5%	4.5%
2004-05	77,359,427	37,483,968	48.5%	3.9%
2005-06	81,177,694	38,295,900	47.2%	2.2%
2006-07	84,387,437	39,283,957	46.6%	2.6%
2007-08	89,675,816	41,340,282	46.1%	5.2%

\* Includes Fee Replacement Appropriation

\*\* Using budget data

\*\*\* First year of combined Indiana and Purdue operations

**TABLE 35**  
**STUDENT FINANCIAL AID BY TYPE OF AID**  
**1976-77 through 2006-07**

	<u>Scholarships and Grants</u>	<u>Loans</u>	<u>All Employment</u>	<u>TOTAL</u>
1976-77	978,679	320,589	159,673	1,458,941
1977-78	925,198	393,836	123,973	1,443,007
1978-79	917,814	487,134	152,805	1,557,753
1979-80	1,464,768	746,284	165,545	2,376,597
1980-81	1,625,858	1,302,951	513,673	3,442,482
1981-82	1,747,630	1,961,328	433,227	4,142,185
1982-83	2,113,758	2,293,424	619,854	5,027,036
1983-84	2,457,014	2,708,963	1,117,775	6,283,752
1984-85	2,520,201	2,672,332	941,048	6,133,581
1985-86	2,550,234	2,630,427	1,175,405	6,356,066
1986-87	2,461,548	2,222,278	1,057,820	5,741,646
1987-88	2,816,082	2,503,969	924,177	6,244,228
1988-89	3,271,178	3,444,215	1,218,931	7,934,324
1989-90	4,128,093	3,072,032	828,023	8,028,148
1990-91	4,151,073	4,010,242	787,022	8,948,337
1991-92	5,189,303	4,504,399	166,775	*9,860,477
1992-93	6,237,330	4,643,142	158,295	11,038,767
1993-94	5,231,889	7,639,649	144,040	13,015,578
1994-95	5,377,367	9,606,031	131,618	15,115,016
1995-96	5,595,853	12,327,329	136,831	18,060,013
1996-97	6,403,831	13,569,997	141,970	**20,115,798
1997-98	6,788,954	13,183,114	120,464	20,092,532
1998-99	7,436,817	13,076,024	199,001	20,711,842
1999-2000	8,388,999	13,626,749	203,438	22,219,186
2000-01	9,178,934	15,379,866	181,848	24,740,648
2001-02	12,784,601	18,763,313	***1,647,740	***33,195,654
2002-03	14,773,872	22,745,691	2,161,684	39,681,247
2003-04	17,420,382	28,239,317	2,432,846	48,092,545
2004-05	****19,440,249	****32,236,129	****2,743,831	****54,420,209
2005-06	20,233,098	34,237,381	****2,921,729	****57,392,208
2006-07	23,477,317	37,766,366	3,109,062	64,352,745

\* Beginning with 1991-92 excludes off-campus employment not administered by the Financial Aid office

\*\* Beginning with 1996-97 includes external billings not previously reported.

\*\*\* 2001-02 restated to reflect new format required by the Board of Trustees; all on-campus student employment included

\*\*\*\* 2004-05 and 2005-06 data revised.

**TABLE 36**  
**STUDENT FEES PER CREDIT HOUR**  
**1976-77 through 2007-08**

	Undergraduate		Undergraduate		Graduate	
	<u>Resident</u>		<u>Non-Resident</u>		<u>Resident</u>	<u>Non-Resident</u>
1976-77	\$21.00		\$42.00	IU	\$26.00	\$52.00 IU
			\$41.00	PU		\$51.00 PU
1977-78	\$23.00		\$50.00	IU	\$30.00	\$60.00 IU
			\$49.00	PU		\$59.00 PU
1978-79	\$24.00	IU	\$55.00	IU	\$32.00	\$65.00 IU
	\$24.50	PU	\$54.00	PU		\$64.00 PU
1979-80	\$26.25		\$58.50		\$34.25	\$69.00
1980-81	\$28.25		\$63.50		\$37.00	\$75.00
1981-82	\$32.45		\$76.15		\$42.45	\$89.95
1982-83	\$37.30		\$91.50		\$48.80	\$108.00
1983-84	\$39.65		\$98.60		\$52.00	\$116.90
1984-85	\$42.45		\$105.50		\$55.65	\$125.00
1985-86	\$45.00		\$111.75		\$59.00	\$132.50
1986-87	\$47.75		\$118.50		\$62.50	\$140.50
1987-88	\$50.25		\$124.50		\$66.00	\$147.50
1988-89	\$53.00		\$131.25		\$69.50	\$155.50
1989-90	\$56.20		\$139.15		\$73.65	\$164.85
1990-91	\$59.55		\$147.50		\$78.05	\$174.75
1991-92	\$64.30		\$159.30		\$84.30	\$188.75
1992-93	\$69.45		\$172.05		\$91.05	\$203.85
1993-94	\$74.30		\$184.10		\$97.40	\$218.10
1994-95	\$80.25		\$198.85		\$105.20	\$235.55
1995-96	\$84.25		\$208.80		\$110.45	\$247.35
1996-97*	\$93.85		\$224.65		\$121.00	\$264.75
1997-98	\$97.60		\$235.85		\$125.85	\$277.95
1998-99	\$101.50		\$247.65		\$130.90	\$291.85
1999-00	\$106.30		\$260.50		\$137.30	\$307.10
2000-01**	\$114.85		\$277.85		\$147.10	\$326.60
2001-02	\$123.35		\$298.70		\$158.05	\$351.30
2002-03 New ***	\$152.70		\$345.55		\$190.85	\$403.45
2002-03 Continuing	\$135.70		\$328.55		\$173.85	\$386.45
2003-04 New	\$170.25		\$385.20		\$210.35	\$448.00
2003-04 Continuing	\$152.40		\$366.75		\$192.50	\$429.55
2004-05 New	\$177.05		\$408.30		\$218.75	\$474.90
2004-05 Continuing	\$158.50		\$388.75		\$200.20	\$455.30
2005-06 New	\$187.65		\$432.80		\$231.90	\$503.40
2005-06 Continuing	\$168.00		\$412.10		\$212.20	\$482.60
2006-07 New	\$201.35		\$461.20		\$248.25	\$536.05
2006-07 Continuing	\$198.90		\$458.75		\$245.80	\$533.60
2007-08 New	\$210.40		\$488.85		\$259.40	\$568.20
2007-08 Continuing	\$207.85		\$486.30		\$256.85	\$565.65

\* Laboratory and special fees included in basic fee beginning this year.

\*\* Technology fee assessed separately from 1996-97 to 2000-01, then included in basic fees. Student Service and parking fees assessed separately.

\*\*\* Two-tier fee schedule beginning 2002-03.

**TABLE 37**  
**SOURCES AND MAJOR DISTRIBUTION OF BUDGETED FUNDS**  
**2003-04 through 2007-08**

<u>Sources of Funds</u>	<u>2003-04</u>	<u>2004-05</u>	<u>2005-06**</u>	<u>2006-07***</u>	<u>2007-08</u>
State Appropriations	49.5%	48.5%	47.2%	46.6%	46.1%
Student Fees	48.8%	50.0%	51.1%	51.9%	52.2%
Other	<u>1.7%</u>	<u>1.5%</u>	<u>1.7%</u>	<u>1.5%</u>	<u>1.7%</u>
TOTAL	100.0%	100.0%	100.0%	100.0%	100.0%
<u>Major Distribution Areas</u>					
Instruction/Dept. Research	44.0%	45.2%	39.7%	38.6%	37.2%
Physical Plant	11.7%	11.5%	10.5%	10.8%	10.7%
Staff Welfare	19.1%	19.6%	19.5%	19.5%	19.6%
Support Areas *	12.1%	11.4%	17.8%	18.2%	18.9%
Student Services	4.3%	4.0%	3.9%	3.9%	3.9%
Central Services	1.3%	1.2%	1.2%	1.2%	1.1%
Fee Remissions **	2.4%	2.8%	3.4%	3.9%	4.0%
Debt Service	<u>5.1%</u>	<u>4.3%</u>	<u>4.1%</u>	<u>3.8%</u>	<u>4.7%</u>
TOTAL	100.0%	100.0%	100.1%	99.9%	100.1%

\* Support Areas comprised of former fields General Administration and General Institutional Services as of 2003-04; totals restated.

\*\* Categories revised in 2005-06 to follow organizational structure.

\*\*\* CELT, CASA, and related programs moved from Academic to Support Areas in 2006-07 (0.7%).

**TABLE 38**  
**GRANTS AND CONTRACTS BY FUNDING SOURCE**  
**2002-03 through 2006-07**

	<u>2002-03</u>	<u>2003-04</u>	<u>2004-05</u>	<u>2005-06</u>	<u>2006-07</u>
Private & Area Organizations	\$2,369,070	\$1,565,105	\$1,738,602	\$1,480,982	\$1,255,311
Federal Agencies	734,026	520,326	1,105,268	937,950	1,329,417
State Agencies	531,856	2,702,273	745,414	2,095,739	1,653,380
University Support and Other	<u>177,368</u>	<u>215,578</u>	<u>535,579</u>	<u>1,062,027</u>	<u>997,762</u>
TOTAL	\$3,812,320	\$5,003,282	\$4,124,863	\$5,576,698	\$5,235,870

**TABLE 39**  
**SOURCES OF GIFTS TO IPFW**  
**2002-03 through 2006-07**

Source of Funds	<u>2002-03</u>	<u>2003-04</u>	<u>2004-05</u>	<u>2005-06</u>	<u>2006-07</u>
IPFW Graduates	\$133,103	\$158,638	\$162,221	\$158,592	\$162,595
Corporations	1,097,546	894,915	1,187,795	920,816	737,466
Corporate Matching Gifts	25,599	42,766	31,877	48,118	24,734
Community Organizations and Foundations	456,545	2,172,915	991,565	1,055,727	2,372,561
Community (Friends)	<u>698,131</u>	<u>3,758,122</u>	<u>1,015,983</u>	<u>6,112,225</u>	<u>2,694,792</u>
TOTAL	\$2,410,924	\$7,027,356	\$3,389,441	\$8,295,478	\$5,992,148

Note: 2004-05 data revised.

**TABLE 40**  
**SUMMARY OF GIFTS TO IPFW**  
**1985-86 through 2006-07**

<u>Year</u>	<u>Total Amount</u>	<u>Year</u>	<u>Total Amount</u>
1985-86	\$326,748	1996-97	\$1,300,781
1986-87	\$409,462	1997-98	\$2,449,810
1987-88	\$491,034	1998-99	\$1,539,041
1988-89	\$1,376,754	1999-00	\$1,731,624
1989-90	\$783,577	2000-01	\$2,113,185
1990-91	\$2,137,795	2001-02	\$1,823,931
1991-92	\$3,169,993	2002-03	\$2,410,924
1992-93	\$1,001,186	2003-04	\$7,027,356
1993-94	\$1,141,748	2004-05	\$3,389,411
1994-95	\$1,008,213	2005-06	\$8,295,478
1995-96	\$2,823,270	2006-07	\$5,992,148

Note: 2001-02 and 2004-05 data revised.

**PART V**  
**FACILITIES**

**TABLE 41**  
**HELMKE LIBRARY HOLDINGS**  
**1972 through 2007**

	<u>Volumes**</u>	<u>Government Publications***</u>	<u>Microfilm Reels</u>	<u>Other Microforms****</u>	<u>TOTAL*****</u>
1972	120,069		1,293	6,064	127,426
1973	136,426		1,573	6,137	144,136
1974	147,160		1,844	8,256	157,260
1975	161,490		2,769	8,398	172,657
1976	156,516		4,275	7,589	168,380
1977*	175,789	26,079	4,330	9,680	215,878
1978	182,132	33,969	5,815	30,112	252,028
1979	198,391	42,052	6,060	43,530	290,033
1980	217,270	50,858	6,849	53,545	328,522
1981	228,151	58,904	7,477	86,995	381,527
1982	234,431	63,055	8,352	107,542	413,380
1983	235,617	67,712	8,895	123,103	435,327
1984	240,874	72,980	9,039	150,805	473,698
1985	246,885	75,070	9,635	172,419	504,009
1986	252,887	78,911	10,595	194,440	536,833
1987	259,309	82,632	10,830	211,313	564,084
1988	265,611	87,041	11,033	231,021	594,706
1989	273,941	91,416	11,156	245,173	621,686
1990	277,545	94,522	11,253	273,435	656,755
1991	281,344	96,823	11,359	321,561	711,087
1992	284,904	102,431	11,477	359,040	757,852
1993	290,562	106,677	11,575	395,762	804,576
1994	295,115	110,697	11,672	416,898	834,382
1995	299,235	113,974	11,777	444,128	869,114
1996	305,090	116,721	11,823	469,714	903,348
1997	311,070	119,638	11,879	489,819	932,406
1998	316,528	121,587	12,101	502,167	952,383
1999	314,929	116,936	12,648	510,827	955,340
2000	333,323	118,646	13,049	521,048	986,066
2001	338,113	120,586	13,203	520,916	992,818
2002	346,015	133,977	13,367	523,152	1,016,511
2003	346,295	114,693	13,455	524,714	999,157
2004	352,023	122,928	13,551	528,541	1,017,043
2005	359,036	115,766	13,654	528,372	1,016,828
2006	363,536	114,555	13,631	531,097	1,022,819
2007	356,536	114,864	13,689	532,104	1,017,193

- \* In accord with ACRL standards, bound serial volumes counted in volume count.
- \*\* Does not include government documents; net of retirement of obsolete materials.
- \*\*\* Does not include microforms or maps.
- \*\*\*\* Includes government documents.
- \*\*\*\*\* Total does not include computer disks, videotapes, art slides, cd rom's and other media.



**TABLE 42**  
**CAPITAL HOLDINGS**

	<u>Date Acquired/ Constructed</u>	<u>Gross Square Feet</u>	<u>Original Cost</u>
<b>Campus Structures - Main Campus Area</b>			
Child Care Center	1956	5,135	***\$20,000
Alfred W. Kettler Hall	1963	232,002	\$5,600,000
Physical Plant Building	1963	9,411	*
Extension Service Building	1963	5,525	*
Greenhouse	1964	709	***\$1,500
Walter E. Helmke Library	1970	116,535	\$4,200,000
Floyd R. Neff Hall	1970	111,890	\$4,415,000
Chiller Plant	1970	8,541	\$742,000
Walter W. Walb Student Union	1971	92,231	\$4,000,000
Equipment Material & Storage Building	1978	581	\$295,000
Fleet Auto Storage Building	1978	2,188	**
Classroom-Medical Building	1981	94,508	\$5,990,000
Hilliard Gates Sports Center	1981	76,167	\$4,117,000
Life Sciences Resource Center	1986	9,543	\$1,200,000
Warehouse/Printing Services	1990	13,368	\$1,089,500
Fine Arts Building	1991	62,265	\$4,870,000
Parking Garage #1	1991	235,294	\$4,500,000
Ernest E. Williams Theatre	1992	51,631	\$4,650,000
Engineering, Technology, and Computer Science Building	1992	78,933	\$10,500,000
Science Building	1997	130,696	\$20,700,000
Parking Garage #2	1997	286,231	\$7,200,000
Fleet Wash Bay	1999	501	\$50,000
Sand Salt Storage	1999	2,095	\$45,000
Press Box	2002	856	\$48,000
Willis Family Bridge	2003	3,581	\$2,300,000
Hobson Center	2004	2,856	\$375,000
Rhinehart Music Center	2007	103,301	\$28,000,000
<b>Campus Structures - West Campus Area</b>			
West Campus Storage	1895	6,000	Unknown
Soccer Support Facility	2002	5,870	\$740,000

Table 42 continued on next page

**TABLE 42  
CAPITAL HOLDINGS**

	<u>Date Acquired/ Constructed</u>	<u>Gross Square Feet</u>	<u>Original Cost</u>
<b>Campus Structures - Northwest Campus Area</b>			
Crooked Lake Biological Station	1975	6,261	Unknown
<b>Campus Structures - Northeast Campus Area</b>			
Ginsberg Center (in honor of S. T. Ginsberg, former Commissioner of Mental Health)	Unknown	96,339	Unknown
Biggs Hall (in honor of Byron Biggs, former Superintendent)	Unknown	Unknown	Unknown
Craig Hall (in honor of George N. Craig, former Governor)	Unknown	Unknown	Unknown
McGonagle Hall (in honor of Charles S. McGonagle, former Superintendent)	Unknown	Unknown	Unknown
Dunham Hall (in honor of W. F. Dunham, former Superintendent)	Unknown	Unknown	Unknown
Handley Hall (in honor of Harold W. Handley, former Governor)	Unknown	Unknown	Unknown
Gates Hall (closed) (in honor of Ralph F. Gates, former Governor)	Unknown	Unknown	Unknown
Dolnick Center (in honor of Bernard Dolnick, former Superintendent)	Unknown	20,055	Unknown
<b>Campus Structures - Student Housing</b>			
Building A	2004	26,457	Ph. I - \$25.5 M
Building B	2004	26,457	Ph. I - \$25.5 M
Building C	2004	26,384	Ph. I - \$25.5 M
Building D	2004	26,638	Ph. I - \$25.5 M
Building E	2004	26,509	Ph. I - \$25.5 M
Building F	2004	26,598	Ph. I - \$25.5 M
Building G	2004	26,509	Ph. I - \$25.5 M
Building H	2007	35,337	Ph. II - \$10.5 M
Building I	2007	26,453	Ph. II - \$10.5 M
WHCM M - Cole Commons	2004	5,233	Included in Ph. I
* Included in cost of Alfred W. Kettler Hall			
** Included in cost of Equipment Material & Storage Building			
*** Estimate of original cost. Exact cost unknown.			