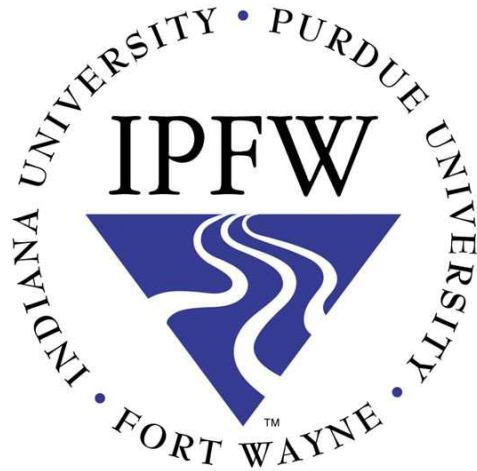


2012-2013 STATISTICAL PROFILE



INDIANA UNIVERSITY - PURDUE UNIVERSITY FORT WAYNE

Indiana University - Purdue University Fort Wayne
Institutional Research

November, 2012

PREFACE

The Indiana University - Purdue University Fort Wayne Statistical Profile is intended to serve as a comprehensive resource about institutional facts and student characteristics. This is the thirtieth year of publication of the Statistical Profile.

Many people in various offices have contributed to the development of the information that is presented here. I want to express appreciation for all of their contributions.

Your comments and suggestions for improvement of future editions are always welcome.

Robert Wilkinson
Institutional Research

TABLE OF CONTENTS

INSTITUTIONAL INFORMATION	-1-
General Officers	-2-
Community Advisory Council	-3-
History of the Fort Wayne Campus	-4-
Notable Events	-6-
Undergraduate and Graduate Degree Programs	-10-
Organizational Chart	-12-
STUDENT INFORMATION	-13-
Summary of Enrollment by County	-14-
Allen County Student Residence	-16-
Enrollment by State of Residency	-17-
Enrollment by Foreign Country or Territory	-18-
Transfer Students* by Former Indiana College/university	-21-
Incoming Transfer* Student Summary by State	-23-
Profile of Enrollment	-24-
Enrollment by Class Standing	-25-
Enrollment by Level and Residency	-25-
Undergraduate Admissions and Matriculants	-26-
Class Rank and Test Scores of Beginners	-26-
Average Age by Student Level	-27-
Enrollment by Ethnic Category	-27-
Enrollment by Visa Status	-28-
Students by Academic Unit and Level	-29-
Students by Academic Unit, Major and Program	-30-
Summer Session Enrollment	-45-
Enrollment by Sex and Status	-46-
Enrollment History	-47-
Credit Hour History	-48-
Full-time Equivalent Enrollment	-49-
Continuing Education Enrollments	-50-
Certificates and Degrees Conferred	-51-
Residence of Alumni	-52-
FACULTY AND STAFF	-53-
Institutional Staff Data Comparison	-54-
Regular Minority Employees	-55-
Minority Employees by Ethnic Category	-55-
Regular Employees by Gender	-56-
Full-time Faculty Salaries by Rank	-56-
Sabbatical Leaves by Department/division	-57-
Tenured Faculty* by Department/division	-59-
Tenured Faculty* by Rank and Sex	-60-

SOURCES OF SUPPORT	-61-
General Funds Operating Budget	-62-
State Appropriation	-63-
Student Financial Aid by Type of Aid	-64-
Student Fees per Credit Hour	-65-
Sources and Major Distribution of Funds	-66-
Grants and Contracts by Funding Source	-66-
Sources of Gifts to IPFW	-67-
Summary of Gifts to IPFW	-67-
FACILITIES	-68-
Helmke Library Holdings	-69-
Capital Holdings	-70-

PART I
INSTITUTIONAL INFORMATION

GENERAL OFFICERS

Michael A. McRobbie, President, Indiana University
Mitch E. Daniels, President, Purdue University
Vicky L. Carwein, Chancellor, Indiana University - Purdue University Fort Wayne

THE TRUSTEES

Indiana University

MaryEllen Kiley Bishop
William R. Cast
Bruce Cole
Philip N. Eskew, Jr., M.D.
Cora T. Griffin
Thomas E. Reilly, Jr.
Derica W. Rice
Patrick A. Shoulders
William H. Strong

Purdue University

Michael R. Berghoff
Michael J. Birck
JoAnn Brouillette
John D. Hardin, Jr.
Keith J. Krach
Gary J. Lehman
Miranda McCormack
Thomas E. Spurgeon
Don Thompson
Bruce White

IPFW FOUNDATION

Indiana Directors

Kathryn D. Callen (2014)
Katherine A. Carrier (2017)
William R. Cast (2015)
Harriet S. Inskeep (2013)
Jeanne S. Miller (2016)

Purdue Directors

Bob F. Jesse (2017)
J. Timothy McGinley (2016)
JoAnn Brouillette (2014)
Margaret Sturm (2015)
Becky Teagarden (2013)

Foundation Directors - Public Members

Betsy Chapman (2015)
Paul Chodak (2013)
David P. Molfenter (2016)
Glenn Rossman (2012)
Paul E. Shaffer (2014)

**COMMUNITY ADVISORY COUNCIL
INDIANA UNIVERSITY - PURDUE UNIVERSITY FORT WAYNE
2012-13**

Michael R. Berghoff

William R. Cast

Julie Inskeep

Larry Lee

Donald P. McArdle

David P. Molfenter

Kathleen Randolph

John Sampson

Paul E. Shaffer

HISTORY OF THE FORT WAYNE CAMPUS

INDIANA UNIVERSITY

Deans and Directors of the Fort Wayne Campus

Frank W. Shockley	1917
Floyd R. Neff	1917-1951
Ralph E. Broyles	1951-1974
(Title of Chancellor for IU Regional Campus 1970 - 1974)	

Locations of the Fort Wayne Campus

- 1917 - Administrative offices - 3rd floor of Allen County courthouse; Evening classes - Central High School
- 1925 - Administrative offices - Central Building, 114 West Wayne Street
- 1930 - Administrative offices - Dime Bank Building; daytime classes - YWCA
- 1939 - Luther Institute Building purchased; offices and classrooms at 1120 South Barr Street
- 1964 - 2101 East Coliseum Boulevard (shared with Purdue University)

PURDUE UNIVERSITY

Deans and Directors of the Fort Wayne Campus

Conwell Poling	1942-47
Richard M. Bateman	1947-60
Robert L. Ewigleben	1960-65
D. Richard Smith	1965-70
Lawrence O. Nelson	1970 (interim)
Roger J. Manges	1970-74

Locations of the Fort Wayne Campus

- 1941 - Central Building, 114 West Wayne Street
- 1946 - Transfer Building, Main and Calhoun Streets
- 1947 - Catholic Community Center Building, Jefferson and Barr Streets
- 1964 - 2101 East Coliseum Boulevard (shared with Indiana University)

INDIANA UNIVERSITY - PURDUE UNIVERSITY FORT WAYNE

In July, 1974, Indiana University at Fort Wayne and Purdue University at Fort Wayne merged under one chancellor.

Chancellors of the Fort Wayne Campus

Donald Schwartz	1974-78	Edward A. Nicholson, Jr.	1984-86 (acting)
Frances T. Borkowski	Summer 1978 (acting)	Thomas P. Wallace	1986-88
Dwight F. Henderson	1978-79 (acting)	Joanne B. Lantz	1988-94
Joseph P. Giusti	1979-84	Michael A. Wartell	1994-2012
		Vicky L. Carwein	2012-

HISTORY OF THE FORT WAYNE CAMPUS, continued

Major Construction Projects

ALFRED W. KETTLER HALL

Groundbreaking	10-18-62
Cornerstone Laying	9-17-63
Building Completed	1964
Dedicated	11-8-64
Named	5-15-73

FLOYD R. NEFF HALL

Groundbreaking	5-11-70
Building Completed	1972
Dedicated & Named	5-15-73

WALTER E. HELMKE LIBRARY

Groundbreaking	11-2-70
Building Completed	1972
Dedicated	5-15-73
Named	9-20-77

WALTER W. WALB STUDENT UNION

Groundbreaking	5-11-70
Building Completed	1973
Dedicated & Named	9-20-77

LIBERAL ARTS BUILDING

(formerly Classroom Medical)

Groundbreaking	12-13-79
Building Completed	1981
Dedicated	5-12-82

HILLIARD GATES SPORTS CENTER

Groundbreaking	5-12-80
Building Completed	1981
Dedicated	5-12-82
Rededicated & Named	10-11-92

LIFE SCIENCES RESOURCE CENTER

Construction Began	11-85
Building Completed	1986
Dedicated	9-16-86

VISUAL ARTS BUILDING

Construction Began	11-17-89
Building Completed	5-31-91
Dedicated	9-15-92
Name changed from Fine Arts Building	3-3-00

PRINTING SERVICES AND WAREHOUSE BUILDING

Construction Began	3-19-90
Building Completed	12-14-90

PARKING GARAGE #1

Construction Began	6-12-90
Building Completed	2-26-91

ENGINEERING, TECHNOLOGY, and COMPUTER SCIENCE BUILDING

Construction Began	2-6-91
Building Completed	11-16-92
Dedicated	9-21-93
Name change from Engineering and Technology Building	4-23-04

ERNEST E. WILLIAMS THEATRE

Construction Began	5-28-91
Building Completed	10-26-92
Dedicated & Named	4-16-93

SCIENCE BUILDING

Groundbreaking	5-8-96
Building Completed	2-27-98
Dedicated	9-15-98

PARKING GARAGE #2

Construction Began	5-27-97
Building Completed	6-25-98

WILLIS FAMILY BRIDGE

Groundbreaking	10-10-02
Completed	2003
Dedicated & Named	9-16-03

STUDENT HOUSING

Phase 1	
Groundbreaking	5-28-03
Completed	August 2004
Dedicated & Named	9-21-04
Phase 2	
Groundbreaking	6-26-06
Completed	2007
Dedicated	8-1-07
Phase 3	
Groundbreaking	2-6-09
Completed	2010
Dedicated	10-20-10

JOHN AND RUTH RHINEHART MUSIC CENTER

Groundbreaking	11-1-05
Completed	2007
Dedicated and Named	10-4-07

MEDICAL EDUCATION CENTER

Groundbreaking	10-2-07
Dedicated	10-30-09

RON VENDERLY FAMILY BRIDGE

Groundbreaking	6-30-08
Dedicated and Named	8-18-09

STUDENT SERVICES COMPLEX

Groundbreaking	3-6-09
Dedicated	11-15-11

PARKING GARAGE #3

Construction Began	5-28-10
Dedicated	11-15-11

STEEL DYNAMICS KEITH E. BUSSE ALUMNI CENTER

Groundbreaking	10-13-09
Dedicated	10-11-11

NOTABLE EVENTS

- 6-4-58 Indiana-Purdue Foundation at Fort Wayne established.
- 11-29-58 Purchase of the original tract for the campus.
- 9-17-64 First combined Indiana University and Purdue University classes at Coliseum Boulevard site.
- 1966 General and Technical Studies Division established (programs integrated into other units in 1982).
- 1968 First degrees conferred.
- 1974 Administrative unification of Indiana University at Fort Wayne and Purdue University at Fort Wayne under one chancellor.
- 1975 Crooked Lake Biological Station lease acquired.
- 1976 Fine Arts School on Berry Street merged with Indiana University - Purdue University at Fort Wayne.
- 1978 Weekend College initiated.
- 1981 Faculty Senates of Indiana University - Purdue University Fort Wayne combined.
- 1983 Library Endowment established as the first major endowment at the university.
- 1985 Purdue University designated responsible corporation for campus management purposes.
- 1986 First named professorship established (Jack W. Schrey Professorship).
- 1987 Academic units reorganized to reflect homogeneous missions.
- 1988 152-acre William T. McKay property adjacent to the campus acquired for the Indiana-Purdue Foundation at Fort Wayne.
- 1989 IPFW 25th Anniversary celebrated.
- Parkview Hospital Nursing Program merger with IPFW completed.
- 1990 Fort Wayne Center for Medical Education approved to offer second year of medical school curriculum.
- 1991 IPFW established first baccalaureate program in women's studies in Indiana.
- Downtown Fine Arts facilities consolidated at Coliseum Boulevard campus.

continued on following page

NOTABLE EVENTS, continued

- 1992 Friends of Indiana University - Purdue University Fort Wayne pavilion erected in Aquarius Park.
- First major building (Kettler Hall) mortgage paid off.
- Indiana University - Purdue University at Fort Wayne changed to Indiana University - Purdue University Fort Wayne in 1992.
- 1993 Theatre Arts Building dedicated on April 16 and named for Ernest E. Williams, the late editor of The News-Sentinel from 1966 to 1982.
- Men's basketball team won the Great Lakes Valley Conference championship and an NCAA postseason berth.
- 1994 IPFW Volleydons hosted the NCAA Final Four.
- Joanne B. Lantz Student Scholarship Endowment established.
- 1995 General education program implemented for all baccalaureate programs.
- Omnibus Lecture Series initiated.
- 1996 IPFW received \$1.7 million scholarship gift from estate of Carlyle and Georgia Wilbur Smith.
- Collegiate Connections Program initiated.
- 1998 Science Building dedicated on September 15. Greenhouse named for H. William Davies, Ph.D., Professor Emeritus of Biology.
- IPFW sponsored the first all-campus Undergraduate Research and Creative Endeavor Symposium.
- The "Plex" opened on the McKay farm to provide indoor soccer facilities in support of the Youth Education through Sports initiative.
- 1999 CELT, the Center for the Enhancement of Learning and Teaching, began providing a wide range of programs to improve instruction and promote the use of technology in teaching.
- 2000 The SCAN Children's Garden opened on campus to recognize individuals who have helped children become adults.

continued on following page

NOTABLE EVENTS, continued

- (2000) The Helmke Library campaign concluded with the opening of the Science Information Center and an Electronic Information Training Center, as well as an expanded endowment to support enhanced services.
- 'OASIS' was implemented to provide web-based access to a wide range of enrollment services including admission, registration, and fee payment.
- 2001 The IPFW/Parkview Health and Wellness Clinic opened on the campus.
- Centers of Excellence were established to promote faculty research and service to the region.
- The Athletics program began the transition to Division I affiliation.
- 2002 The Chapman Professor of English was established as IPFW's first endowed professorship.
- The Fort Wayne Public Television Center opened on land leased from IPFW.
- The SCT Banner student information system was implemented, providing a wide variety of new services for students, faculty, and staff.
- 2003 The Willis Family Bridge connecting the campus to Student Housing on the Waterfield Campus was completed and dedicated.
- The *Discover IPFW* capital campaign was announced with a goal of raising \$20 million.
- 2004 The Waterfield Campus Student Housing complex opened for Fall 2004 and was dedicated.
- The IPFW Warsaw Center grand opening was held on December 2, 2003.
- A bronze mastodon was installed and dedicated.
- The First Year Experience Program was established to coordinate services for students and improve student retention.
- An IPFW license plate program was approved.
- 2005 The Northeast Indiana Innovation Center opened on IPFW grounds north of the main campus.
- Three endowed chair positions were established: the Shaffer Chair of Finance, the Steel Dynamics Chair of Engineering, and the Systems Engineering Chair.
- The "Last Stampede" and Gala concluded the Mastodons on Parade program, which was the highlight event of IPFW's 40th Anniversary Celebration. The Gala auction raised \$200,000 for United Way.
- 2006 The Richard T. Doermer School of Business and Management Sciences became IPFW's first named school.

continued on following page

NOTABLE EVENTS, continued

- (2006) IPFW athletic's programs accepted an invitation to join the Mid-Continent Conference. The conference became The Summit League on June 1, 2007.
- 2007 The *Discover IPFW* capital campaign concluded with \$43 million in support for IPFW, which was more than twice the original goal.
- Chancellor Wartell was honored with a Sagamore of the Wabash Award from the Governor's office.
- 2008 The Management and Academic Mission Agreement was renewed by IU and Purdue trustees for the period July 1, 2008 to July 1, 2013.
- The Holiday Inn at IPFW and the Coliseum opened.
- Chapman Scholars Program established to attract and recognize students with excellent academic records and a commitment to leadership and community service.
- Auer scholarship endowment established.
- IPFW Strategic Plan for 2008-14 and Master Plan were adopted.
- 2009 The Remnant Trust exhibit at IPFW was cited as a national model.
- The Indiana-Purdue Foundation at Fort Wayne was re-named to be the IPFW Foundation at the September 16, 2009 annual meeting.
- 2010 The Arnie Ball Legacy Endowment campaign raised more than \$1 million, qualifying for a university matching-funds contribution, and providing fully-endowed scholarships for the men's volleyball program.
- The first IPFW Riverfest celebration was held on June 26.
- The women's volleyball and tennis teams won Summit League championships, thus qualifying for their NCAA Championship tournaments.
- The Continuum Art Gallery, managed by IPFW students and alumni, opened on July 30.
- IPFW was selected for the community engagement classification by the Carnegie Foundation.
- 2011 College of Education and Public Policy was established.
- The IU School of Medicine - Fort Wayne had its first graduating class.
- IPFW signed a research agreement with the Chengdu Panda Research Center and the Global Cause Foundation.
- The women's tennis team repeated as Summit League Champions and participated in the NCAA Championship Tournament.
- 2012 Vicky L. Carwein became Chancellor.

UNDERGRADUATE AND GRADUATE DEGREE PROGRAMS*

ARTS AND SCIENCES

Undergraduate Programs

Anthropology, B.A.
Biology, A.A., B.S.
Biology Teaching, B.S.
Chemical Methods, A.S.
Chemistry, B.S., B.S.C.
Chemistry Teaching, B.S.
Communication Sciences and Disorders, B.S.
Economics, B.A. (Political Science)
English, A.A., B.A.
French, A.A., B.A.
Geology, B.A., B.S.G.
German, A.A., B.A.
History, A.A., B.A.
Interpersonal and Organizational
Communication, B.A.
Mathematics, A.A., B.S.
Mathematics Teaching, B.S.
Media and Public Communication, B.A.
Medical Technology, B.S.
Philosophy, B.A.
Physics, B.S.
Physics Teaching, B.S.
Political Science, A.A., B.A.
Psychology, A.A., B.A.
Sociology, B.A.
Spanish, A.A., B.A.
Women's Studies, A.A., B.A.

Graduate Programs

Biological Science, M.S.
English, M.A, M.A.T.
Liberal Studies, M.L.S.
Mathematics, M.A.T, M.S.
Professional Communication Studies,
M.A., M.S.
Sociological Practice, M.A.

BUSINESS

Undergraduate Programs

Business, A.S.B., B.S.B.

Graduate Program

Business Administration, M.B.A.

CONTINUING STUDIES

Undergraduate Programs

General Studies, A.A.G.S., B.G.S.

EDUCATION AND PUBLIC POLICY

Undergraduate Programs

Elementary Education, B.S.Ed.
Early Childhood
Middle Childhood
Public Affairs, B.S.P.A.
Secondary Education, B.S.Ed.
Adolescence/Young Adulthood
Earth Space Science Education
English Education
French Education
German Education
Social Studies Education
Spanish Education
Early Adolescence

Graduate Programs

Counseling, M.S.Ed.
Educational Leadership, M.S.Ed.
Elementary Education, M.S.Ed.
Public Affairs, M.P.A.
Public Management, M.P.M.
Secondary Education, M.S.Ed.
Special Education, M.S.Ed.

continued on following page

UNDERGRADUATE AND GRADUATE DEGREE PROGRAMS, continued

ENGINEERING, TECHNOLOGY, AND COMPUTER SCIENCE

Undergraduate Programs

Architectural Engineering Technology, A.S.
Civil Engineering, B.S.C.E.
Civil Engineering Technology, A.S.
Computer Engineering, B.S.Cp.E.
Computer Engineering Technology, B.S.
Computer Science, B.A., B.S.
Construction Engineering Technology, B.S.
Electrical Engineering, B.S.E.E.
Electrical Engineering Technology, A.S., B.S.
Industrial Engineering Technology, A.S., B.S.
Information Systems, A.S., B.S.
Interior Design, A.S., B.S.
Mechanical Engineering, B.S.M.E.
Mechanical Engineering Technology, A.S., B.S.
Organizational Leadership and
Supervision, A.S., B.S.

Graduate Program

Applied Computer Science, M.S.
Engineering, M.S.E.
Organizational Leadership and
Supervision, M.S.
Technology, M.S.

HEALTH AND HUMAN SERVICES

Undergraduate Programs

Dental Hygiene, A.S.D.H.
Dental Laboratory Technology, A.S.D.L.T.
Hospitality Management, B.S.
Human Services, B.S.
Nursing, B.S.
Radiography, A.S.R.

Graduate Program

Nursing, M.S.
Nursing Administration, M.S.

LABOR STUDIES

Undergraduate Programs

Labor Studies, A.S.L.S., B.S.L.S.

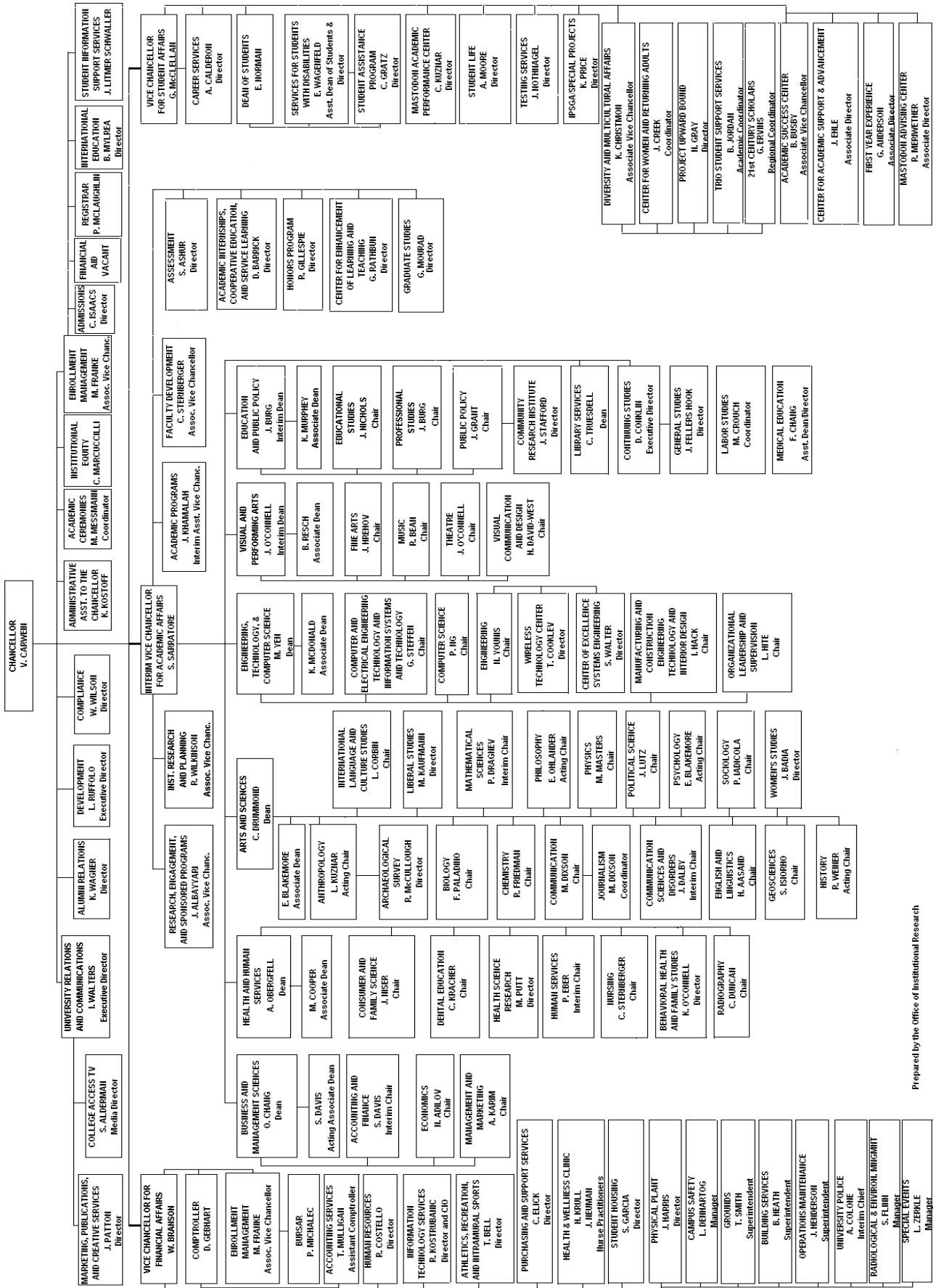
VISUAL AND PERFORMING ARTS

Undergraduate Programs

Art Education, B.A.
Commercial Art, A.S.C.A.
Fine Arts, B.A., B.F.A.
Music, B.Mus., B.S.M.
Music Education, B.Mus.Ed.
Music Therapy, B.S.M.T.
Theatre, B.A.

*Degree programs which may be completed at IPFW. Transfer and certificate programs are excluded from this listing. Some degree programs also offer specialization areas not shown in this listing.

INDIANA UNIVERSITY - PURDUE UNIVERSITY FORT WAYNE ORGANIZATIONAL CHART 2012-13



PART II
STUDENT INFORMATION

TABLE 1
SUMMARY OF ENROLLMENT BY COUNTY
FALL SEMESTERS 2008 - 2012

<u>County</u>	<u>2008</u>	<u>2009</u>	<u>2010</u>	<u>2011</u>	<u>2012</u>
Unknown	0	0	0	0	0
Adams	421	434	431	543	583
Allen	6,504	7,257	7,603	7,587	7,431
Bartholomew	1	1	0	2	7
Benton	1	1	2	2	2
Blackford	19	21	25	23	27
Boone	7	3	3	5	8
Brown	0	0	0	0	1
Carroll	1	1	1	6	4
Cass	33	27	19	24	24
Clark	3	2	1	2	2
Clay	1	1	1	0	1
Clinton	8	8	6	4	7
Crawford	2	0	0	1	0
Daviess	0	2	2	1	0
Dearborn	0	2	2	1	3
Decatur	1	0	2	2	1
DeKalb	561	596	616	600	531
Delaware	34	36	27	33	36
Dubois	2	3	2	3	2
Elkhart	231	259	270	252	223
Fayette	3	1	5	4	0
Floyd	2	1	4	1	2
Fountain	1	0	0	0	0
Franklin	0	1	2	2	2
Fulton	52	67	69	53	53
Gibson	0	0	0	0	0
Grant	127	120	120	107	104
Greene	1	0	0	2	0
Hamilton	25	29	31	29	30
Hancock	0	2	1	4	6
Harrison	0	0	0	1	1
Hendricks	2	4	8	16	14
Henry	4	8	5	8	6
Howard	29	36	34	33	25
Huntington	392	391	379	363	385
Jackson	0	0	1	1	2
Jasper	6	7	7	6	5
Jay	36	23	24	17	20
Jefferson	1	1	2	2	3
Jennings	3	2	2	2	1
Johnson	5	5	9	5	5
Knox	2	2	2	3	3
Kosciusko	564	662	681	696	585
LaGrange	203	290	265	289	293

Table 1 continued on following page

TABLE 1
SUMMARY OF ENROLLMENT BY COUNTY, continued
FALL SEMESTERS 2008 - 2012

<u>County</u>	<u>2008</u>	<u>2009</u>	<u>2010</u>	<u>2011</u>	<u>2012</u>
Lake	78	102	117	126	90
LaPorte	17	19	22	25	24
Lawrence	0	0	3	3	3
Madison	17	21	23	34	35
Marion	42	42	58	46	62
Marshall	53	57	75	67	58
Martin	0	0	0	0	1
Miami	47	46	38	48	35
Monroe	20	18	14	12	11
Montgomery	3	4	7	4	4
Morgan	3	2	4	7	5
Newton	0	0	0	0	2
Noble	583	605	591	625	593
Ohio	0	0	0	0	0
Orange	0	0	0	1	0
Owen	0	0	0	0	1
Parke	0	0	1	1	0
Perry	1	1	0	1	0
Pike	0	0	0	0	0
Porter	26	27	38	24	21
Posey	1	2	1	0	0
Pulaski	3	2	6	3	6
Putnam	2	1	2	2	2
Randolph	7	7	7	8	5
Ripley	1	1	1	1	2
Rush	0	0	4	2	2
Scott	0	0	1	1	0
Shelby	2	0	1	3	1
Spencer	0	0	0	0	1
St. Joseph	59	89	131	153	139
Starke	6	7	6	7	8
Steuben	269	302	313	334	293
Sullivan	0	0	0	1	1
Tippecanoe	13	29	24	17	33
Tipton	6	3	1	3	2
Union	2	1	1	1	0
Vanderburg	3	2	5	7	4
Vigo	4	3	2	4	10
Wabash	226	276	227	240	227
Warren	0	0	1	0	0
Warrick	3	1	2	3	2
Washington	1	0	1	0	0
Wayne	4	8	6	9	8
Wells	335	375	423	430	428
White	6	4	4	2	1
Whitley	<u>449</u>	<u>510</u>	<u>509</u>	<u>527</u>	<u>515</u>
TOTAL	11,580	12,873	13,334	13,517	13,073

TABLE 2
ALLEN COUNTY STUDENT RESIDENCE
FALL SEMESTER 2012

<u>Zip Code</u>	<u>Count</u>	<u>Percentage</u>
46801/2	153	1.9%
46803	102	1.3%
46804	588	7.4%
46805	540	6.8%
46806	270	3.4%
46807	352	4.4%
46808	387	4.9%
46809	133	1.7%
46814	257	3.2%
46815	795	10.0%
46816	250	3.2%
46818	404	5.1%
46819	178	2.2%
46825	773	9.7%
46835	1,135	14.3%
46845	602	7.6%
Others with less than 1% (46800-99)	<u>33</u>	<u>0.4%</u>
Total Fort Wayne area	6,952	87.7%

<u>Outlying Areas</u>	<u>Zip code</u>	<u>Count</u>	<u>Percentage</u>
Arcola	46704	5	0.1%
Grabill	46741	43	0.5%
Harlan	46743	43	0.5%
Hoagland	46745	66	0.8%
Huntertown	46748	135	1.7%
Leo	46765	131	1.7%
Monroeville	46773	71	0.9%
New Haven	46774	391	4.9%
Woodburn	46797	67	0.8%
Yoder	46798	<u>26</u>	<u>0.3%</u>
Total Outlying Areas		978	12.3%
TOTAL ALLEN COUNTY		7,930	100.0%

Note: Residence reported by address zip code at time of enrollment, not time of admission.

TABLE 3
ENROLLMENT BY STATE OF RESIDENCY
FALL SEMESTERS, 2008 - 2012

<u>State or Territory</u>	<u>2008</u>	<u>2009</u>	<u>2010</u>	<u>2011</u>	<u>2012</u>
Alabama	0	0	4	3	1
Alaska	2	3	2	2	1
Arizona	3	2	6	8	10
Arkansas	2	4	3	2	0
California	22	17	25	17	19
Colorado	2	4	6	8	9
Connecticut	4	3	2	2	0
Delaware	1	1	1	0	2
Dist of Columbia	0	0	0	0	1
Florida	23	25	18	14	19
Georgia	3	4	3	1	0
Hawaii	2	1	1	2	2
Idaho	1	0	1	0	0
Illinois	49	49	57	46	32
Indiana	11,580	12,873	13,334	13,517	13,073
Iowa	4	8	6	4	3
Kansas	3	4	4	2	0
Kentucky	10	12	13	10	6
Louisiana	2	1	2	1	0
Maine	1	0	0	0	0
Maryland	5	5	6	4	4
Massachusetts	5	4	5	7	6
Michigan	81	85	98	82	74
Minnesota	6	7	7	9	4
Mississippi	1	1	0	0	0
Missouri	7	5	8	7	6
Montana	0	0	0	0	1
Nebraska	2	3	1	1	1
Nevada	1	2	1	1	1
New Hampshire	0	0	0	0	0
New Jersey	5	6	5	5	3
New Mexico	0	3	2	2	1
New York	10	7	12	12	10
North Carolina	5	4	3	4	6
North Dakota	0	0	0	0	0
Ohio	218	241	236	208	164
Oklahoma	1	1	2	3	0
Oregon	5	7	7	5	4
Pennsylvania	13	9	10	11	8
Rhode Island	0	0	1	1	2
South Carolina	3	1	1	0	2
South Dakota	2	2	1	1	1
Tennessee	5	7	7	10	7
Texas	8	6	4	6	13
Utah	3	4	4	3	1
Vermont	0	1	1	1	2
Virginia	6	8	10	9	8
Washington	1	6	7	4	4
West Virginia	2	1	1	2	1
Wisconsin	14	13	11	9	8
Wyoming	1	0	1	1	1
Unknown	0	0	0	0	0
Foreign Countries	<u>214</u>	<u>225</u>	<u>252</u>	<u>279</u>	<u>250</u>
TOTAL	12,338	13,675	14,192	14,326	13,771

TABLE 4
ENROLLMENT BY FOREIGN COUNTRY OR TERRITORY
FALL SEMESTERS, 2008-2012

<u>Foreign Country or Territory</u>	<u>2008</u>	<u>2009</u>	<u>2010</u>	<u>2011</u>	<u>2012</u>
Afghanistan	1	0	0	0	0
Albania	0	0	0	0	0
Algeria	0	0	0	0	0
Angola	9	11	12	5	1
Argentina	0	0	0	0	1
Australia	2	2	2	2	1
Azerbaijan	0	0	2	3	3
Bahamas	1	1	1	0	0
Bahrain	0	0	0	0	0
Bangladesh	5	7	11	10	12
Barbados	1	0	1	1	1
Belgium	0	0	0	1	1
Bolivia	0	0	0	0	0
Bosnia & Herzegovin	1	1	1	1	0
Brazil	13	18	21	15	9
British Indian Ocean	0	0	0	0	0
Bulgaria	1	2	2	3	0
Cameroon	0	0	0	0	0
Canada	21	16	19	24	25
Cayman Islands	0	0	0	0	0
Chad	0	0	0	0	0
Chile	0	0	0	0	0
China, People's Republic of	6	8	11	32	43
Colombia	1	1	0	0	0
Congo (formerly Zaire)	1	0	1	1	1
Costa Rica	0	0	0	0	0
Croatia, Republic of	0	0	0	0	0
Cuba	0	1	1	0	0
Cyprus	1	0	0	0	0
Czech Republic	2	2	0	0	0
Dominican Republic	0	0	0	0	0
Ecuador	2	3	2	2	3
Egypt	1	1	2	2	0
El Salvador	0	1	0	0	0
Ethiopia	3	1	0	1	2
Finland	0	0	0	0	0
France	1	1	1	0	1
Gambia	1	1	0	0	0
Germany	2	1	3	4	6
Ghana	1	1	1	1	1
Greece	0	1	1	0	0
Guatemala	1	1	1	1	3
Haiti	4	5	5	6	3
Honduras	1	1	1	1	1
Hong Kong	1	1	1	1	0
India	23	20	19	24	17
Indonesia	0	0	0	0	0
Iran	0	0	0	0	1

table continued on next page

TABLE 4
ENROLLMENT BY FOREIGN COUNTRY OR TERRITORY
FALL SEMESTERS, 2008-2012, continued

<u>Foreign Country or Territory</u>	<u>2008</u>	<u>2009</u>	<u>2010</u>	<u>2011</u>	<u>2012</u>
Iraq	0	1	1	1	0
Ireland	1	1	0	0	0
Israel	1	0	0	0	0
Italy	1	2	3	3	2
Jamaica	1	1	3	1	1
Japan	4	5	6	6	5
Jordan	1	2	2	2	0
Kazakstan	0	0	0	0	0
Kenya	16	17	16	10	5
Korea, Democratic Republic of	2	1	0	0	0
Korea, Republic of	5	7	13	19	18
Kuwait	2	1	1	1	3
Laos	0	0	0	0	0
Macau	0	0	0	0	0
Macedonia, The Former Yugoslav	1	1	3	1	1
Malawi	0	0	0	0	0
Malaysia	0	1	1	0	0
Mauritius	0	0	0	0	0
Mexico	7	5	10	6	9
Military Europe	0	0	0	0	1
Moldova	0	0	0	0	0
Morocco	0	0	0	0	0
Myanmar (formerly Burma)	5	5	4	3	1
Namibia	1	1	0	0	0
Nepal	3	4	5	3	4
Netherlands	1	1	1	1	0
New Zealand	0	0	2	1	0
Nicaragua	0	0	0	0	0
Nigeria	8	8	8	9	10
Northern Mariana Islands	0	0	0	0	1
Norway	1	0	0	0	2
Oman	0	2	2	2	2
Pakistan	2	3	3	3	5
Panama	1	1	2	1	0
Peru	1	2	1	2	2
Philippine Islands	2	2	1	1	1
Poland	0	0	1	0	0
Portugal	1	0	1	1	1
Puerto Rico	2	2	3	6	7
Romania	0	1	1	0	0
Russian Federation	2	2	1	2	1
Rwanda	0	1	1	1	1
Saint Kitts and Nevis	1	1	1	0	0
Saudi Arabia	0	1	1	7	6

table continued on next page

TABLE 4
ENROLLMENT BY FOREIGN COUNTRY OR TERRITORY
FALL SEMESTERS, 2008-2012, continued

<u>Foreign Country or Territory</u>	<u>2008</u>	<u>2009</u>	<u>2010</u>	<u>2011</u>	<u>2012</u>
Serbia	0	0	1	1	1
Singapore	1	0	0	1	1
Slovakia	0	0	0	0	0
South Africa	0	2	0	0	0
Spain	1	2	2	1	2
Sri Lanka	2	2	1	3	1
St. Lucia	0	0	0	0	0
Sudan	2	1	1	1	0
Sweden	0	0	0	0	0
Switzerland	0	0	0	1	1
Syrian Arab Republic	0	0	0	1	0
Taiwan	1	2	3	5	3
Tajikistan	1	0	0	0	0
Tanzania	0	0	0	0	0
Thailand	2	0	1	2	2
Trinidad and Tobago	0	0	0	1	0
Tunisia	0	0	0	0	1
Turkey	0	1	0	1	1
Uganda	0	0	0	1	1
Ukraine	1	1	1	3	0
United Arab Emirates	0	0	1	1	1
United Kingdom	9	8	7	6	1
Uzbekistan	1	1	0	0	0
Venezuela	1	1	1	2	3
Vietnam	9	10	8	9	5
Yemen	0	0	1	1	0
Yugoslavia	2	1	2	1	0
Zambia	0	0	0	0	0
Zimbabwe	<u>1</u>	<u>2</u>	<u>2</u>	<u>3</u>	<u>1</u>
TOTAL	214	225	252	279	250

TABLE 5
INCOMING TRANSFER STUDENTS* BY FORMER
INDIANA COLLEGE/UNIVERSITY
FALL SEMESTERS, 2008 - 2012

<u>Institution</u>	<u>2008</u>	<u>2009</u>	<u>2010</u>	<u>2011</u>	<u>2012</u>
Ancilla College	2	0	1	2	0
Anderson University	5	3	5	2	2
Art Institute of Indianapolis	0	0	1	1	0
Ball State University	42	45	42	44	41
Bethel College	2	4	3	1	2
Butler University	2	1	3	0	2
Calumet College of St. Joseph	0	0	0	0	0
Davenport College-South Bend	0	0	0	0	0
DePauw University	0	0	1	0	0
Earlham College	0	0	0	0	0
Everest College	0	0	0	1	0
Franklin College of Indiana	2	0	3	1	1
Goshen College	0	2	2	5	3
Grace College	3	5	5	3	2
Hanover College	2	0	1	1	0
Harrison College (formerly Indiana Business College)	2	3	4	6	0
Holy Cross College	0	0	0	1	0
Huntington College	9	9	5	6	8
Hyles-Anderson College	1	0	0	0	0
Indiana Bible College	0	0	0	0	0
Indiana Institute of Technology	17	15	14	17	15
Indiana State University-Terre Haute	3	3	7	6	8
Indiana University-Bloomington	40	56	42	44	47
Indiana University-East	0	2	4	2	3
Indiana University-Kokomo	11	9	7	9	6
Indiana University-Northwest	3	1	3	3	4
Indiana University-South Bend	12	18	15	17	15
Indiana University-Southeast	1	0	2	3	2
Indiana U.-Purdue U. Fort Wayne	54	82	15	5	5
Indiana U.-Purdue U. Indianapolis	19	27	23	23	26
Indiana U.-Purdue U. Indianapolis - Columbus	0	1	0	0	1
Indiana Wesleyan University	9	9	3	4	5
International Business College	6	8	9	6	2
ITT Technical Institute-Fort Wayne	6	18	7	6	3
ITT Technical Inst.-Indianapolis	0	0	0	0	0
Ivy Tech State College (historical)	5	1	4	5	5
Ivy Tech State College (by region and city)					
1 Northwest (East Chicago, Gary, Michigan City,	1	0	2	1	0
2 North Central (Elkhart, South Bend, Warsaw)	14	12	14	10	12
3 Northeast (Fort Wayne)	136	205	207	167	150
4 Lafayette (Lafayette)	1	3	1	2	3
5 Kokomo (Kokomo, Logansport)	2	3	2	1	4
6 East Central (Anderson, Marion, Muncie)	6	6	6	7	10
7 Wabash Valley (Terre Haute)	0	0	1	0	2
8 Central Indiana (Indianapolis)	0	0	0	0	0

Table 5 continued on next page

TABLE 5
INCOMING TRANSFER STUDENTS* BY FORMER
INDIANA COLLEGE/UNIVERSITY
FALL SEMESTERS, 2008 - 2012, continued

<u>Institution</u>	<u>2008</u>	<u>2009</u>	<u>2010</u>	<u>2011</u>	<u>2012</u>
<i>Ivy Tech State College (by region and city)</i>					
9 Whitewater (Richmond)	0	0	0	0	0
10 Columbus	0	0	0	0	0
11 Southeast (Madison, Lawrenceburg)	0	0	0	0	0
12 Southwest (Evansville)	0	1	1	0	0
13 South Central (Sellersburg)	0	0	0	0	0
14 Bloomington (Bloomington)	2	1	0	0	2
Lincoln Technical Institute	1	0	2	0	1
Lutheran College of Health Prof.	1	0	0	0	0
Manchester College	10	18	8	15	6
Marian College	2	0	0	1	1
Med Tech College	0	0	0	3	0
Michiana/Brown Mackie College	8	11	15	17	4
Oakland City College	1	1	2	1	1
Professional Careers Institute	1	0	0	0	0
Purdue University-Calumet	5	3	1	5	3
Purdue University-North Central	2	10	5	6	5
Purdue University-West Lafayette	36	57	33	44	56
Ravenscroft Beauty College	0	0	1	1	0
Rose Hulman Institute of Tech.	1	0	0	0	0
Ross Medical Education Center	0	0	2	3	1
Rudae's School of Beauty	0	0	0	0	1
Sawyer College	0	0	0	0	0
St. Elizabeth Hospital	0	0	0	0	0
St. Joseph's College	2	3	0	0	3
St. Joseph's Hospital Sch. of Nursing	0	0	0	0	0
St. Mary's College	0	2	0	0	0
St. Mary of the Woods College	0	0	0	2	1
Taylor University-Upland	1	5	0	2	0
Taylor University-Fort Wayne	7	10	5	1	0
Trine University	10	15	18	13	9
Trine University-Fort Wayne	1	0	1	1	1
Trinity College of the Bible	1	0	0	0	0
Tucker Area Voc-Tech Ctr.	0	0	1	0	0
University of Evansville	2	0	2	1	0
University of Indianapolis	3	7	4	5	5
University of Notre Dame	0	1	0	0	0
University of St. Francis	34	25	40	28	28
University of Southern Indiana	4	7	2	7	3
Valparaiso University	4	2	2	1	4
Vincennes University	5	7	7	11	5
Wabash College	<u>0</u>	<u>2</u>	<u>1</u>	<u>2</u>	<u>1</u>
TOTAL	562	739	617	582	530

TABLE 6
INCOMING TRANSFER* STUDENT SUMMARY BY STATE
FALL SEMESTERS, 2008 - 2012

<u>State or Territory</u>	<u>2008</u>	<u>2009</u>	<u>2010</u>	<u>2011</u>	<u>2012</u>
Alabama	2	3	7	4	0
Alaska	0	0	0	0	0
Arizona	2	8	5	7	7
Arkansas	1	0	1	0	0
California	4	7	10	7	5
Colorado	1	2	0	0	3
Connecticut	0	0	0	0	0
Delaware	0	0	1	0	0
District of Columbia	0	0	0	1	1
Florida	15	10	9	6	6
Georgia	0	1	4	2	6
Hawaii	0	0	0	1	0
Idaho	0	0	1	0	0
Illinois	14	22	11	7	7
Indiana	562	739	617	581	530
Iowa	0	3	2	0	2
Kansas	1	6	2	0	0
Kentucky	1	7	4	3	3
Louisiana	0	0	2	0	1
Maine	2	0	0	0	0
Maryland	1	5	0	1	1
Massachusetts	1	1	1	1	1
Michigan	23	26	20	25	19
Minnesota	2	1	2	1	1
Mississippi	1	2	1	1	1
Missouri	2	1	7	2	4
Montana	1	0	0	0	1
Nebraska	0	0	1	0	0
Nevada	0	1	0	1	1
New Hampshire	1	0	1	0	0
New Jersey	1	2	0	0	1
New Mexico	0	0	1	0	0
New York	1	0	3	0	1
North Carolina	4	3	0	3	3
North Dakota	0	0	0	0	0
Ohio	31	25	28	20	23
Oklahoma	1	1	2	2	3
Oregon	2	4	0	2	1
Pennsylvania	3	3	6	1	1
Rhode Island	0	0	0	1	1
South Carolina	3	2	0	1	1
South Dakota	0	0	0	1	0
Tennessee	6	5	2	3	2
Texas	3	3	6	4	10
Utah	1	0	1	0	2
Vermont	0	0	0	1	1
Virginia	3	2	2	3	4
Washington	0	2	2	1	2
West Virginia	2	0	0	1	1
Wisconsin	4	3	3	4	2
Wyoming	0	0	0	1	0
Unclassified & Foreign Transfers	<u>13</u>	<u>21</u>	<u>14</u>	<u>18</u>	<u>14</u>
TOTAL	715	921	779	718	673

TABLE 7
PROFILE OF ENROLLMENT
FALL SEMESTERS, 1974 - 2012

<u>Year</u>	<u>Undergraduate</u>	<u>Graduate</u>	<u>Total</u>
1974	6,875	1,253	8,128
1975	7,529	1,432	8,961
1976	7,857	1,336	9,193
1977	7,964	1,393	9,357
1978	7,781	1,234	9,015
1979	7,929	1,262	9,191
1980	8,912	1,270	10,182
1981	9,245	1,138	10,383
1982	9,153	1,005	10,158
1983	9,571	905	10,476
1984	9,301	884	10,185
1985	9,233	1,101	10,334
1986	9,147	1,035	10,182
1987	9,528	1,053	10,581
1988	9,998	1,075	11,073
1989	10,454	968	11,422
1990	10,961	918	11,879
1991	11,206	871	12,077
1992	11,247	843	12,090
1993	10,898	803	11,701
1994	10,674	839	11,513
1995	10,171	840	11,011
1996	9,889	860	10,749
1997	9,815	854	10,669
1998	9,805	848	10,653
1999	9,733	823	10,556
2000	9,773	759	10,532
2001	10,282	847	11,129
2002	10,880	877	11,757
2003	11,068	738	11,806
2004	11,089	721	11,810
2005	11,028	767	11,795
2006	10,890	782	11,672
2007	11,110	833	11,943
2008	11,578	760	12,338
2009	12,876	799	13,675
2010	13,402	790	14,192
2011	13,608	718	14,326
2012	13,117	654	13,771

TABLE 8
ENROLLMENT BY CLASS STANDING
FALL SEMESTERS, 2008 - 2012

<u>Class Level</u>	<u>2008</u>	<u>2009</u>	<u>2010</u>	<u>2011</u>	<u>2012</u>
Freshman	4,639	5,021	5,097	4,623	3,779
Sophomore	2,558	2,658	2,744	2,827	2,576
Junior	1,491	1,549	1,649	1,695	1,680
Senior	2,099	2,255	2,346	2,510	2,566
Undergrad. Non-Degree	791	1,393	1,566	1,953	2,516
Graduate	685	697	699	671	610
Graduate Non-Degree	<u>75</u>	<u>102</u>	<u>91</u>	<u>47</u>	<u>44</u>
TOTAL	12,338	13,675	14,192	14,326	13,771

TABLE 9
ENROLLMENT BY LEVEL AND RESIDENCY
FALL SEMESTERS, 2008 - 2012

<u>Student Level</u>	<u>Resident</u>	<u>Non-Resident</u>	<u>Total</u>
Fall, 2008			
Undergraduate	11,089	489	11,578
Graduate	<u>724</u>	<u>36</u>	<u>760</u>
TOTAL	11,813	525	12,338
Fall, 2009			
Undergraduate	12,354	522	12,876
Graduate	<u>752</u>	<u>47</u>	<u>799</u>
TOTAL	13,106	569	13,675
Fall, 2010			
Undergraduate	12,836	566	13,402
Graduate	<u>737</u>	<u>53</u>	<u>790</u>
TOTAL	13,573	619	14,192
Fall, 2011			
Undergraduate	13,028	580	13,608
Graduate	<u>672</u>	<u>46</u>	<u>718</u>
TOTAL	13,700	626	14,326
Fall, 2012			
Undergraduate	12,537	580	13,117
Graduate	<u>607</u>	<u>47</u>	<u>654</u>
TOTAL	13,144	627	13,771

TABLE 10
UNDERGRADUATE ADMISSIONS AND MATRICULANTS
FALL SEMESTERS, 2008 - 2012

<u>Admissions</u>	<u>2008</u>	<u>2009</u>	<u>2010</u>	<u>2011</u>	<u>2012</u>
Beginner	3,158	3,463	3,833	2,530	2,686
Dual Credit HS Non-Degree			1,427	1,759	2,141
Transfer	906	1,101	927	722	646
Intercampus Transfer	--	--	--	--	--
IC - Permanent	149	211	154	234	255
IC - Temporary	31	35	23	22	32
Ivy Tech Dual Admit				4	7
Readmission	61	87	91	105	103
Re-entry	467	569	625	563	467
Non-degree	<u>847</u>	<u>1,380</u>	<u>69</u>	<u>73</u>	<u>62</u>
TOTAL	5,619	6,846	7,149	6,012	6,399

<u>Matriculants</u>	<u>2008</u>	<u>2009</u>	<u>2010</u>	<u>2011</u>	<u>2012</u>
Beginner	2,094	2,222	2,297	2,044	1,629
Dual Credit HS Non-Degree			1,254	1,601	1,892
Transfer	616	769	669	554	492
Intercampus Transfer	--	--	--	--	--
IC - Permanent	85	134	101	149	159
IC - Temporary	14	18	9	15	22
Ivy Tech Dual Admit				0	0
Readmission	56	73	75	93	97
Re-entry	286	347	382	370	303
Non-degree	<u>726</u>	<u>1,173</u>	<u>50</u>	<u>47</u>	<u>45</u>
TOTAL	3,877	4,736	4,837	4,873	4,639

Note: Dual Credit HS Non-Degree category began in 2010 and Ivy Tech Dual category began in 2011.

TABLE 11
CLASS RANK AND TEST SCORES OF BEGINNERS
FALL SEMESTERS, 2008 - 2012

	<u>2008</u>	<u>2009</u>	<u>2010</u>	<u>2011</u>	<u>2012</u>
Top 20% of High School Class	22.4%	21.8%	23.2%	25.5%	27.8%
Top 50% of High School Class	67.0%	67.1%	67.9%	71.0%	75.8%
Average SAT Critical Reading Score	477	480	481	483	500
Average SAT Math Score	496	492	494	494	507
Average SAT Writing Score	462	460	463	466	479
Average SAT Total Score	1435	1432	1438	1443	1486

Note: Profiles shown above include only beginners with data on file (83% for class rank, 90% for test scores in 2012). Re-centered scores reported.

**TABLE 12
AVERAGE AGE BY STUDENT LEVEL
FALL SEMESTER, 2012**

<u>Level</u>		<u>Average Age</u>	<u>Age Range</u>
Undergraduate	Freshman		
	Associate	22.4	17-59
	Baccalaureate	21.3	17-60
	Sophomore		
	Associate	26.5	18-72
	Baccalaureate	23.2	17-77
	Junior	25.6	18-65
	Senior	28.4	19-77
	Non-degree	30.7	19-68
	Non-degree/high school	16.8	14-43
	Average age for undergraduate students	23.1	14-77
Graduate	Degree-seeking	32.8	22-76
	Non-degree	34.1	22-56
	Average age for graduate students	32.9	22-76
	Average age for all students	23.5	14-77

**TABLE 13
ENROLLMENT BY ETHNIC CATEGORY
FALL SEMESTERS, 2008 - 2012**

<u>Year</u>	<u>American Indian/Alaskan Native</u>		<u>Asian</u>		<u>Native Hawaiian or Other Pacific Islander</u>		<u>Black</u>		<u>Hispanic or Latino</u>		<u>Other, incl. Non-res. Alien</u>		<u>Two or More Races</u>		<u>White</u>		<u>TOTAL</u>
	<u>#</u>	<u>%</u>	<u>#</u>	<u>%</u>	<u>#</u>	<u>%</u>	<u>#</u>	<u>%</u>	<u>#</u>	<u>%</u>	<u>#</u>	<u>%</u>	<u>#</u>	<u>%</u>	<u>#</u>	<u>%</u>	
2008	45	0.4	260	2.1			719	5.8	377	3.1	407	3.3			10,530	85.3	12,338
2009	56	0.4	298	2.2			917	6.7	444	3.2	494	3.7			11,466	83.8	13,675
2010	64	0.5	284	2.0	7	0.0	1,045	7.3	536	3.8	421	3.0	202	1.4	11,633	82.0	14,192
2011	57	0.4	302	2.1	5	0.0	1,024	7.2	624	4.4	405	2.8	261	1.8	11,648	81.3	14,326
2012	47	0.3	315	2.3	6	0.0	796	5.8	668	4.9	315	2.3	352	2.6	11,272	81.8	13,771

Note: Beginning in 2010, ethnicity categories changed.

TABLE 14
ENROLLMENT BY VISA STATUS
FALL SEMESTERS, 2008-12

<u>Visa Type</u>	<u>Visa Description</u>	<u>2008</u>	<u>2009</u>	<u>2010</u>	<u>2011</u>	<u>2012</u>
A2	Government Official or Depend	0	0	0	0	0
B1	Temporary Visitor for Business	2	0	0	0	2
E2	Treaty Investor or Dependent	1	0	0	2	1
F1	Academic Student	127	158	173	170	182
F2	Dependent of Student	1	0	0	0	0
G2	International Organization Rep	1	0	0	0	0
H1	Temporary Speciality Occ	6	3	4	6	6
H2	Dependent of H1	0	0	0	0	0
H4	Dependent of H1, H2, H3	4	2	6	3	2
J1	Exchange Visitor	0	0	0	21	14
J2	Dependent of Exchange Visitor	0	0	0	0	0
K1	Fiance(e)	0	0	0	0	0
K3	Fiance(e)	0	0	0	0	0
L1	Temporary Employee	3	2	1	1	1
L2	Dependent of L1	0	0	0	1	1
R1	Religious Worker	0	0	0	0	0
R2	Religious Worker Dependent	0	0	0	0	0
TN	Trade Visa Canada Mexico	<u>0</u>	<u>0</u>	<u>0</u>	<u>1</u>	<u>1</u>
	TOTAL	145	165	184	205	210

TABLE 15
STUDENTS BY ACADEMIC UNIT AND LEVEL
FALL SEMESTER, 2012

<u>UNIT</u>	<u>UNDERGRADUATE</u>		<u>GRADUATE</u>		<u>TOTAL</u>	
	<u>#</u>	<u>%</u>	<u>#</u>	<u>%</u>	<u>#</u>	<u>%</u>
<u>FULL-TIME STUDENTS</u>						
Arts & Sciences	1,824	23.2	31	22.5	1,855	23.2
Business	801	10.2	64	46.4	865	10.8
Continuing Studies	330	4.2	0	0.0	330	4.1
Education & Public Policy	917	11.7	18	13.0	935	11.7
Engr. Tech. & Comp.Sci.	1,156	14.7	23	16.7	1,179	14.7
Health & Human Services	1,171	14.9	2	1.4	1,173	14.6
Labor Studies	4	0.1	0	0.0	4	0.0
Unit of Affil. Programs	1,147	14.6	0	0.0	1,147	14.3
Visual & Performing Arts	<u>520</u>	<u>6.6</u>	<u>0</u>	<u>0.0</u>	<u>520</u>	<u>6.5</u>
TOTAL	7,870	60.0	138	21.1	8,008	58.2
<u>PART-TIME STUDENTS</u>						
Arts & Sciences	597	11.4	132	25.6	729	12.7
Business	291	5.5	51	9.9	342	5.9
Continuing Studies	303	5.8	0	0.0	303	5.3
Education & Public Policy	256	4.9	200	38.8	456	7.9
Engr. Tech.&Comp.Sci.	556	10.6	79	15.3	635	11.0
Health & Human Services	383	7.3	54	10.5	437	7.6
Labor Studies	2	0.0	0	0.0	2	0.0
Unit of Affil. Programs	2,679	51.1	0	0.0	2,679	46.5
Visual & Performing Arts	<u>180</u>	<u>3.4</u>	<u>0</u>	<u>0.0</u>	<u>180</u>	<u>3.1</u>
TOTAL	5,247	40.0	516	78.9	5,763	41.8
<u>TOTAL STUDENTS</u>						
Arts & Sciences	2,421	18.5	163	24.9	2,584	18.8
Business	1,092	8.3	115	17.6	1,207	8.8
Continuing Studies	633	4.8	0	0.0	633	4.6
Education & Public Policy	1,173	8.9	218	33.3	1,391	10.1
Engr. Tech.& Comp.Sci.	1,712	13.1	102	15.6	1,814	13.2
Health & Human Services	1,554	11.8	56	8.6	1,610	11.7
Labor Studies	6	0.0	0	0.0	6	0.0
Unit of Affil. Programs	3,826	29.2	0	0.0	3,826	27.8
Visual & Performing Arts	<u>700</u>	<u>5.3</u>	<u>0</u>	<u>0.0</u>	<u>700</u>	<u>5.1</u>
TOTAL	13,117	95.3	654	4.7	13,771	100.0

Note: Unit of Affiliated Programs includes Conditional Admissions and Mastodon Advising Center.

TABLE 16
STUDENTS BY ACADEMIC UNIT, MAJOR AND PROGRAM
FALL SEMESTERS, 2008 - 2012

Description	Degr	Major	Prog	Conct	Uni v	2008	2009	2010	2011	2012
COLLEGE OF ARTS AND SCIENCES (AS)										
Agriculture and Forestry (AGFR)										
Agriculture	ND	AGR	ASPX		P	18	18	18	22	15
Pre-Forestry	ND	PFOR	ASPX		P	3	2	4	5	2
Pre-Vet Science	ND	PVET	ASPX		P	41	36	42	45	54
Pre-Vet Technology	ND	PVTT	ASPX		P	<u>6</u>	<u>6</u>	<u>12</u>	<u>12</u>	<u>9</u>
AGFR Total						68	62	76	84	80
Anthropology (ANTH)										
Anthropology	BA	ANTH	ANTB		I	61	55	73	73	66
Native American Stds. Cert.	CERT	NAMC	NAMC		I	0	0	0	0	0
Research, Cert.	CERT	ANTC	ANTC		I	<u>1</u>	<u>0</u>	<u>0</u>	<u>0</u>	<u>0</u>
ANTH Total						62	55	73	73	66
Arts and Sciences Special Students (ANSS)										
Non-Deg. Arts & Sci.	ND	ASNI	ASIN		I	4	8	8	2	7
Non-Deg. Arts & Sci.	ND	ASNP	ASPN		P	12	12	19	7	14
Undecided Arts & Sci.	ND	UND	ASIN		I	42	36	28	33	18
Undecided Arts & Sci.	ND	UND	ASPN		P	<u>40</u>	<u>43</u>	<u>52</u>	<u>54</u>	<u>39</u>
ANSS Total						98	99	107	96	78
Biology (BIOL)										
Biological Science	MS	BIOL	BIOM		P	34	37	49	38	35
Pre-Biological Science MS	NDG	BION	BIOP		P	4	4	2	0	2
Biology	AA	BIOL	BIOA		P	3	2	3	6	3
Biology	BS	BIOL	BIOB		P	158	162	185	191	186
Biology Teaching	BS	BIOT	BIOB		P	10	16	18	13	10
Medical Tech.	BS	MT	BIOB		P	27	24	25	28	21
Pre-Dentistry (BIOL)	BS	BIPD	BIOB		P	38	42	32	33	31
Pre-Medicine (BIOL)	BS	BIPM	BIOB		P	139	162	196	201	206
Pre-Professional School	ND	BIPP	ASPN		P	0	0	0	0	0
Research, Cert.	CERT	BIOC	BIOC		P	<u>0</u>	<u>0</u>	<u>0</u>	<u>0</u>	<u>0</u>
BIOL Total						413	449	510	510	494
Center for Academic Support and Advancement (CASA)										
Non-Degree Transitional St	ND	TRN	TRIN		I	--	--	--	--	--
Non-Degree Transitional St	ND	TRN	TRPN		P	--	--	--	--	--
Pre-Major TRS	ND	TRP	TRIP		I	--	--	--	--	--
Pre-Major TRS	ND	TRP	TRPP		P	<u>--</u>	<u>--</u>	<u>--</u>	<u>--</u>	<u>--</u>
CASA Total						--	--	--	--	--
Chemistry (CHM)										
Chemical Methods	AS	CHEM	CHMA		P	2	2	2	3	1
Chemistry	BS	CHEM	CHCB		P		1	0	0	0
Chemistry	BS	CHEM	CHMB		P	27	36	32	40	39
Chemistry BS in	BSC	CHEC	CHCB		P	2	3	2	4	3
Chemistry BS in-Biochem opt	BSC	CHEB	CHCB		P	10	15	16	21	19
Chemistry Teaching	BS	CHMT	CHMB		P	4	7	6	5	4

TABLE 16
STUDENTS BY ACADEMIC UNIT, MAJOR AND PROGRAMS
FALL SEMESTERS, 2008-2012, continued

Description	Degr	Major	Prog	Conct	Uni	2008	2009	2010	2011	2012
					v					
Pre-Dentistry (CHM)	BS	CHPD	CHMB		P	8	3	3	3	2
Pre-Medicine (CHM)	BS	CHPM	CHMB		P	22	23	30	32	19
Research, Cert.	CERT	CHMC	CHMC		P	0	0	0	0	0
# Chemistry	MS	CHMM	CHMM		P	<u>0</u>	<u>0</u>	<u>0</u>	<u>0</u>	<u>0</u>
CHM Total						75	90	91	108	87
College of Arts and Sciences Transfers (COAS)										
Afro-American Studies	ND	AFR	ASIX		I	0	0	0	0	0
Anthropology	ND	ANTH	ASIX		I	0	1	0	0	0
Apparel Merchandising	ND	APM	ASIX		I	0	0	0	0	0
Astronomy	ND	AST	ASIX		I	0	0	0	0	0
Biology	ND	BIOL	ASIX		I	0	0	0	0	0
Chemistry	ND	CHEM	ASIX		I	0	0	0	0	0
Classical Studies	ND	CLS	ASIX		I	0	0	0	0	0
Cognitive Science	ND	CGS	ASIX		I	0	0	0	0	0
Comparative Literature	ND	CML	ASIX		I	0	0	0	0	0
Computer Science	ND	CS	ASIX		I	0	0	0	0	0
Criminal Justice	ND	CRMJ	ASIX		I	0	0	0	0	0
East Asian Lang. & Lit.	ND	EAL	ASIX		I	0	0	0	0	0
Economics	ND	ECON	ASIX		I	0	0	0	0	0
English	ND	ENG	ASIX		I	0	0	0	0	0
Folklore	ND	FOLK	ASIX		I	0	0	0	0	0
French	ND	FREN	ASIX		I	0	0	0	0	0
Geography	ND	GEG	ASIX		I	0	0	0	0	0
Geological Sciences	ND	GEOL	ASIX		I	0	0	0	0	0
Germanic Studies	ND	GER	ASIX		I	0	0	0	0	0
History	ND	HIST	ASIX		I	0	0	0	0	0
History of Art	ND	ARH	ASIX		I	0	0	0	0	0
Italian	ND	ITL	ASIX		I	0	0	0	0	0
Jewish Studies	ND	JST	ASIX		I	0	0	0	0	0
Linguistics	ND	LING	ASIX		I	0	0	0	0	0
Mathematics	ND	MA	ASIX		I	0	0	1	0	0
Music	ND	MUS	ASIX		I	0	0	0	0	0
Near Eastern Lang. & Cul.	ND	NEL	ASIX		I	0	0	0	0	0
Philosophy	ND	PHIL	ASIX		I	0	0	0	0	0
Physics	ND	PHYS	ASIX		I	0	0	0	0	0
Political Science	ND	POLS	ASIX		I	0	0	0	0	0
Portugese	ND	POR	ASIX		I	0	0	0	0	0
Psychology	ND	PSY	ASIX		I	1	0	0	0	1
Religious Studies	ND	REL	ASIX		I	0	0	0	0	0
Slavic Lang. & Lit.	ND	SLL	ASIX		I	0	0	0	0	0
Sociology	ND	SOC	ASIX		I	2	0	0	0	1
Spanish	ND	SPAN	ASIX		I	2	1	1	0	0
Speech & Hearing Sciences	ND	SHS	ASIX		I	0	0	0	0	0
Speech Communication	ND	SCM	ASIX		I	0	0	0	0	0
Studio Art	ND	SAR	ASIX		I	0	0	0	0	0
Telecommunications	ND	TEL	ASIX		I	0	0	0	0	0
Theatre and Drama	ND	TD	ASIX		I	0	0	0	0	0
Undecided IU Transfer	ND	UND	ASIX		I	<u>2</u>	<u>6</u>	<u>8</u>	<u>9</u>	<u>14</u>
COAS Total						7	8	10	9	16

TABLE 16
STUDENTS BY ACADEMIC UNIT, MAJOR AND PROGRAMS
FALL SEMESTERS, 2008-2012, continued

Description	Degr	Major	Prog	Conct	Uni v	2008	2009	2010	2011	2012
Communication (COM)										
Intrprsnl & Orgztnl Comm	BA	COMI	COMB		P	83	85	88	87	87
Media and Public Comm	BA	COMM	COMB		P	154	152	162	157	157
Pre-Communication	ND	COMN	COMP		P	5	4	5	5	13
Profess. Com. Studies	MA	PCSS	PCAM		P	22	26	36	32	27
Pre-Profess Com Studies MA	NDG	PCSN	PCAP		P	3	0	3	1	3
Profess. Com. Studies	MS	PCSS	PCSM		P	0	4	6	4	5
Pre-Profess. Com. Stud MS	NDG	PCSN	PCSP		P	<u>0</u>	<u>0</u>	<u>0</u>	<u>2</u>	<u>0</u>
COM Total						267	271	300	288	292
Communication Sciences and Disorders (CSD)										
Com Sciences & Disorders	BS	CSD	CSDB		P	<u>114</u>	<u>126</u>	<u>117</u>	<u>111</u>	<u>105</u>
CSD Total						114	126	117	111	105
English and Linguistics (ENGL)										
English	AA	ENG	ENGA		I	1	4	7	5	4
English	BA	ENG	ENGB		I	71	62	63	42	41
English-Comm Media	BA	ENG	ENGB	ENGC	I	5	10	11	10	6
English-Eng Language	BA	ENG	ENGB	ENGL	I	5	4	5	4	10
English-Eng Lit	BA	ENG	ENGB	ENLT	I	31	22	30	65	66
English-Teacher Cert.	BA	ENG	ENGB	ENGT	I	7	15	10	10	13
English-Writing	BA	ENG	ENGB	ENGW	I	21	41	59	61	69
English	MA	ENG	ENGM		I	25	24	30	28	34
Pre-English MA	NDG	ENGN	ENGP		I	2	6	8	4	3
English Teaching	MAT	ENG	ENTM		I	7	3	1	4	2
Pre-English MAT	NDG	ENGN	ENTP		I	3	0	2	1	0
Teach Engl. as New Language UG	CERT	TEUC	TEUC		I	1	1	3	2	1
Teach Engl. as New Language GR	CERT	TEGC	TEGC		I	<u>6</u>	<u>4</u>	<u>6</u>	<u>1</u>	<u>2</u>
ENGL Total						185	196	235	237	251
Geosciences (GEOS)										
Geology	BA	GEOL	GLAB		I	4	6	8	5	4
Geology BS in	BSG	GEOL	GLSB		I	10	13	17	22	16
Geology (Envir. Geol)	BSG	GLGE	GLSB		I	3	4	6	7	6
Geology, Undeclared	ND	GEOL	ASIN		I	<u>1</u>	<u>0</u>	<u>1</u>	<u>1</u>	<u>0</u>
GEOS Total						18	23	32	35	26
Graduate School Transfers (GRAD)										
Social Work	NDG	SWK	SWKN		I	0	0	0	0	0
Unassigned Grad.	NDG	GRU	GRIN		I	9	5	4	2	0
Unassigned Grad.	NDG	GRU	GRPN		P	<u>0</u>	<u>0</u>	<u>0</u>	<u>0</u>	<u>0</u>
GRAD Total						9	5	4	2	0
History (HIST)										
History	AA	HIST	HISA		I	4	6	5	3	3
History	BA	HIST	HISB		I	<u>88</u>	<u>89</u>	<u>115</u>	<u>117</u>	<u>102</u>
HIST Total						92	95	120	120	105
Interdisciplinary Studies (IDS)										
Amer. Studies, Cert	CERT	AMSC	AMSC		I	0	0	0	0	0
Eth. & Cul. St., Cert	CERT	ETHC	ETHC		I	0	0	0	0	0
Gerontology, Cert	CERT	GRNC	GRNC		I	0	0	1	1	0
Intrntnl Studies, Cert	CERT	INTC	INTC		I	0	1	0	1	0
Liberal Studies	MLS	LBST	LBSM		I	26	28	33	34	31
Pre-Liberal Studies MLS	NDG	LBSN	LBSP		I	1	2	0	0	1

TABLE 16
STUDENTS BY ACADEMIC UNIT, MAJOR AND PROGRAMS
FALL SEMESTERS, 2008-2012, continued

Description	Degr	Major	Prog	Conct	Uni v	2008	2009	2010	2011	2012
Peace & Conflict Stds Cert	CERT	PACC	PACC		I	<u>0</u>	<u>1</u>	<u>0</u>	<u>0</u>	<u>0</u>
IDS Total						27	32	34	36	32
International Language and Culture Studies (ILCS)										
French	AA	FREN	FREA		I	0	0	1	0	0
French	BA	FREN	FREB		I	7	7	7	11	16
French - Teacher Cert.	BA	FRET	FREB		I	3	2	1	2	3
German	AA	GER	GERA		I	1	0	1	0	0
German	BA	GER	GERB		I	13	12	15	9	9
German - Teacher Cert.	BA	GERT	GERB		I	0	1	2	1	1
Spanish	AA	SPAN	SPAA		I	5	3	3	1	0
Spanish	BA	SPAN	SPAB		I	34	38	29	34	30
Spanish - Teacher Cert.	BA	SPAT	SPAB		I	<u>10</u>	<u>13</u>	<u>8</u>	<u>11</u>	<u>12</u>
ILCS Total						73	76	67	69	71
Journalism (JOUR)										
Journalism	ND	JOUR	ASIX		I	<u>14</u>	<u>17</u>	<u>16</u>	<u>11</u>	<u>4</u>
JOUR Total						14	17	16	11	4
Mathematical Sciences (MATH)										
Appl. Math.-Oper. Res.	MS	APMM	MATM		P	5	5	2	1	4
Pre-Appl. Math.-Oper. Res.	NDG	APMN	MATP		P	0	0	0	1	1
Applied Statistics Grad, Cert.	CERT	MASC	MASC		P	0	2	1	2	1
Computer Science	BA	CS	CSAB		P	1	1	--	--	--
Math BS-Actuarial Sci.	BS	MAAS	MATB		P	14	24	21	19	21
Math BS-Business	BS	MBUS	MATB		P	0	1	3	8	10
Math BS-Computing	BS	MACM	MATB		P	5	1	2	1	1
Math BS-Statistics	BS	MAST	MATB		P	6	3	2	3	3
Mathematical Sciences	MS	MA	MATM		P	8	6	13	12	6
Pre-Math Sciences MA	NDG	MAN	MATP		P	1	0	4	0	0
Mathematics	AA	MA	MATA		P	0	0	0	1	0
Mathematics	BS	MA	MATB		P	18	17	13	19	27
Mathematics Teaching	BS	MATT	MATB		P	83	79	62	47	38
Mathematics Teaching	MAT	MATT	MASM		P		4	4	2	0
Research, Cert.	CERT	MATC	MATC		P	<u>1</u>	<u>1</u>	<u>0</u>	<u>0</u>	<u>0</u>
MATH Total						142	144	127	116	112
Philosophy (PHIL)										
Philosophy	BA	PHIL	PHIB		P	31	35	36	43	38
Philosophy, Graduate	NDG	PHIL	PHIN		P	<u>0</u>	<u>0</u>	<u>0</u>	<u>0</u>	<u>0</u>
PHIL Total						31	35	36	43	38
Physics (PHYS)										
Physics	BS	PHYS	PHYB		P	17	16	22	28	35
Physics, Graduate	NDG	PHYS	PHYN		P	0	0	0	0	0
Physics Teaching	BS	PHYT	PHYB		P	4	4	6	8	6
Research, Cert.	CERT	PHYC	PHYC		P	<u>0</u>	<u>0</u>	<u>0</u>	<u>0</u>	<u>0</u>
PHYS Total						21	20	28	36	41
Political Science (POLS)										
Civic Education & Public Advocacy	CERT	CEPC	CEPC		I	0	0	1	0	0
Economics	BA	ECON	ECOB		I	8	25	21	21	25
Political Science	AA	POLS	POLA		I	1	3	5	4	1
Political Science	BA	POLS	POLB		I	<u>88</u>	<u>115</u>	<u>100</u>	<u>94</u>	<u>82</u>
POLS Total						97	143	127	119	108

TABLE 16
STUDENTS BY ACADEMIC UNIT, MAJOR AND PROGRAMS
FALL SEMESTERS, 2008-2012, continued

Description	Degr	Major	Prog	Conct	Uni v	2008	2009	2010	2011	2012
Psychology (PSY)										
Psychology	AA	PSY	PSYA		P	12	19	22	24	18
Psychology	BA	PSY	PSYB		P	326	365	396	410	418
Psychology, Graduate	NDG	PSY	PSYN		P	0	0	0	0	0
Research, Cert.	CERT	PSYC	PSYC		P	0	0	0	0	0
PSY Total						338	384	418	434	436
Science and Other PU Transfers (SCIT)										
Atmospheric Science	ND	ATM	ASPX		P	0	0	0	0	0
Audiology & Speech Sci.	ND	AUS	ASPX		P	0	0	0	0	0
Biological Science	ND	BIOL	ASPX		P	0	0	0	0	0
Chemistry	ND	CHEM	ASPX		P	0	0	0	0	0
Communication	ND	COM	ASPX		P	0	0	0	0	0
Community Health	ND	CHL	ASPX		P	0	0	0	0	0
Computer Science	ND	CS	ASPX		P	0	0	0	0	0
Economics	ND	ECON	ASPX		P	0	0	0	0	0
English	ND	ENG	ASPX		P	0	0	0	0	0
Fine Arts	ND	PFA	ASPX		P	0	0	0	0	0
French	ND	FREN	ASPX		P	0	0	0	0	0
Geology	ND	GEOL	ASPX		P	0	0	0	0	0
German	ND	GER	ASPX		P	0	0	0	0	0
History	ND	HIST	ASPX		P	0	0	0	0	0
Mathematics	ND	MA	ASPX		P	0	0	0	0	0
Media Sciences	ND	MDS	ASPX		P	0	0	0	0	0
Philosophy	ND	PHIL	ASPX		P	0	0	0	0	0
Physical Education	ND	PPE	ASPX		P	0	0	0	0	0
Physics	ND	PHYS	ASPX		P	0	0	0	0	0
Political Science	ND	POLS	ASPX		P	0	0	0	0	0
Pre-Pharmacy	ND	PPPH	ASPX		P	62	68	79	68	74
Psychological Sciences	ND	PSY	ASPX		P	0	0	0	0	0
Recreation	ND	REC	ASPX		P	0	0	0	0	0
Sociology	ND	SOC	ASPX		P	0	0	0	0	0
Spanish	ND	SPAN	ASPX		P	0	0	0	0	0
Statistics	ND	STA	ASPX		P	0	0	0	0	0
Undecided/Other PU Transfer	ND	UND	ASPX		P	9	8	5	8	6
SCIT Total						71	76	84	76	80
Sociology (SOC)										
Sociological Practice	MA	SOCP	SOCM		I	17	11	8	9	6
Pre-Sociological Practice	NDG	SOCN	SOCP		I	0	0	0	0	0
# Sociology-Crime & Deviance	BA	SOC	SOCP	SOCD	I	0	1	0	0	0
# Sociology-Family & Community	BA	SOC	SOCP	SOCF	I	0	0	0	0	0
# Sociology-Organization & Soc Ch	BA	SOC	SOCP	SOCO	I	0	0	0	0	0
Sociology	BA	SOC	SOCP		I	60	64	54	55	44
SOCA Total						77	76	62	64	50
Women's Studies (WOST)										
Women's Studies	AA	WST	WSIA		I	0	1	1	1	0
Women's Studies	AA	WST	WSPA		P	0	0	1	1	1
Women's Studies	BA	WST	WSIB		I	6	7	7	5	7
Women's Studies	BA	WST	WSPB		P	2	2	2	1	3
Women's Studies, Cert	CERT	WSIC	WSIC		I	0	0	0	0	0

TABLE 16
STUDENTS BY ACADEMIC UNIT, MAJOR AND PROGRAMS
FALL SEMESTERS, 2008-2012, continued

Description	Degr	Major	Prog	Conct	Uni	2008	2009	2010	2011	2012
Women's Studies, Cert	CERT	WSPC	WSPC		P	<u>0</u>	<u>0</u>	<u>1</u>	<u>0</u>	<u>1</u>
WOST Total						8	10	12	8	12
<i>COLLEGE OF ARTS AND SCIENCES TOTAL</i>						2,307	2,492	2,686	2,685	2,584
SCHOOL OF BUSINESS (BN)										
Accounting/Finance (ACFN)										
Accounting	BSB	ACCB	BNSB		I	96	104	116	143	111
Finance	BSB	BFIN	BNSB		I	46	47	39	43	36
Accounting, P-B Cert.	CPB	ACCC	BNSC		I	<u>49</u>	<u>67</u>	<u>57</u>	<u>48</u>	<u>29</u>
ACFN Total						191	218	212	234	176
Business Administration (BUA)										
Pre-MBA Undergrad	ND	BSCG	BNSN		I	0	1	0	2	1
Business-General Bach.	ND	BSBG	BNSN		I	789	736	669	628	532
Business-Probationary Bach.	ND	BUSP	BNSN		I	35	40	111	128	144
Business-Special	ND	BUSS	BNSN		I	3	3	6	5	0
General Administration	MBA	MBA	BNSM		I	132	99	70	88	78
General Administration-Accelerated	MBA	MBAA	BNSM		I		32	33	28	35
Non-Degree MBA Grad	NDG	MBAN	BNSP		I	1	2	0	2	2
Grad. Bus.-Conditional	NDG	MBAC	BNMN		I	<u>2</u>	<u>0</u>	<u>2</u>	<u>1</u>	<u>0</u>
BMS Total						962	913	891	882	792
Economics (ECON)										
Bus. Econ. & Public Pol	BSB	BEPP	BNSB		I	<u>6</u>	<u>15</u>	<u>18</u>	<u>24</u>	<u>22</u>
ECON Total						6	15	18	24	22
Management/Marketing (MGMK)										
Business Administration	ASB	BMAA	BNSA		I	50	105	107	123	98
Marketing	BSB	BMKT	BNSB		I	44	37	32	48	37
Mgmt. & Admin.	BSB	BMAD	BNSB		I	66	82	66	74	82
Small Business Mgmt. Certificate	CERT	SMBC	BNBC		I				<u>1</u>	<u>0</u>
MGMK Total						160	224	205	246	217
<i>SCHOOL OF BUSINESS TOTAL</i>						1,319	1,370	1,326	1,386	1,207
DIVISION OF CONTINUING STUDIES (CS)										
General Studies (GNST)										
General Studies	AAGS	GNST	GSTA		I	98	87	87	98	58
General Studies Distance	AAGS	GNSD	GSTA		I	0	1	0	0	1
General Studies	BGS	GNST	GSTB		I	525	550	603	587	555
General Studies Distance	BGS	GNSD	GSTB		I	6	4	3	1	15
General Studies Non Degree	ND	GNSN	GSTN		I	<u>0</u>	<u>3</u>	<u>0</u>	<u>1</u>	<u>4</u>
<i>DIVISION OF CONTINUING STUDIES TOTAL</i>						629	645	693	687	633
COLLEGE OF EDUCATION AND PUBLIC POLICY (EP)										
Education (EDUA)										
Adult Education	NDG	EACE	EDMN		I	0	0	0	0	0
Education Pre-Major	ND	EDUP	EDPR		I	108	105	88	81	52
Elementary Ed - PU Transfer	ND	ELED	EUPX		P	3	4	1	1	1
Elementary Ed Certification	ND	ELED	EDCT		I	14	12	8	2	8
Non-Degree Education	ND	EDND	EDUD		I	0	3	3	3	4
Secondary Ed Certification	ND	SEED	EDCT		I	37	42	15	7	11
Social Stds Ed-PU Transfer	ND	SSTD	EUPX		P	0	0	0	0	0

TABLE 16
STUDENTS BY ACADEMIC UNIT, MAJOR AND PROGRAMS
FALL SEMESTERS, 2008-2012, continued

Description	Degr	Major	Prog	Conct	Uni	2008	2009	2010	2011	2012
					v					
Special Ed - IU Transfer	ND	SPED	EUIX		I	1	1	0	0	0
Special Ed - PU Transfer	ND	SPED	EUPX		P	0	0	0	0	0
Undecided Education	ND	UND	EDUD		I	<u>0</u>	<u>0</u>	<u>0</u>	<u>1</u>	<u>0</u>
EDUA Total						163	167	115	95	76
Educational Studies (EDES)										
# Early Childhood Ed. AS	ASED	ECHA	EDEA		I	39	54	42	20	9
Early Childhood Ed. BSED	BSED	ECED	EDCB		I					7
Early Childhood Ed. BSED	BSED	ECED	EDCB	ECEB	I					2
Elementary Ed BSEd	BSED	ELED	EDEB		I	146	122	233	281	185
Elementary Education BSED	BSED	ELED	EDEE		I					110
Elem Ed-Early Education	BSED	ELED	EDEE	ECEE	I					1
Elem Ed-Language Arts	BSED	ELED	EDEE	EDLA	I					8
Elem Ed-Mathematics	BSED	ELED	EDEE	EDMA	I					12
Elem Ed-Science	BSED	ELED	EDEE	EDSC	I					2
Elem Ed-Social Studies	BSED	ELED	EDEE	EDSS	I					6
Elem Ed-Early Childhood	BSED	ELED	EDUB	EEEC	I	431	467	323	194	81
Elem Ed-Middle Childhood	BSED	ELED	EDUB	EEMC	I	52	46	29	13	6
English Education BSED	BSED	ENGE	EDSE		I					15
English Education-Literature	BSED	ENGE	EDSE	ELIT	I					1
Earth Space Science Education	BSED	ESED	EDSE		I					3
German Education	BSED	GERE	ESDE		I					1
Middle School Education BSED	BSED	MGED	EDMG		I					2
Middle School Ed-Language Arts	BSED	MGED	EDMG	MGLA	I					3
Middle School Ed-Mathematics	BSED	MGED	EDMG	MGMA	I					7
Middle School Ed-Science	BSED	MGED	EDMG	MGSC	I					2
Middle School Ed-Social Studies	BSED	MGED	EDMG	MGSS	I					2
Secondary Ed Undeclared Conct	BSED	SEED	EDBS		I	93	111	98	86	32
Sec. Ed.- Early Adolescence Ed	BSED	SEED	EDBS	SEEA	I	51	53	41	32	18
Sec. Ed.- Earth Sp Sci Ed	BSED	SEED	EDBS	ESED	I	4	7	12	6	1
Sec. Ed.- English Ed	BSED	SEED	EDBS	ENGE	I	44	56	44	42	23
Sec. Ed.- French Ed	BSED	SEED	EDBS	FREE	I	2	1	0	0	0
Sec. Ed.- German Ed	BSED	SEED	EDBS	GERE	I	0	0	0	0	0
Sec. Ed.- Social Studies Ed	BSED	SEED	EDBS	SSTD	I	94	81	71	50	22
Sec. Ed.- Spanish Ed	BSED	SEED	EDBS	SPAE	I	7	8	7	3	1
Secondary Education BSED	BSED	SEED	EDSE		I					19
Spanish Education	BSED	SPAE	EDSE		I					2
Social Studies Education	BSED	SSTD	EDSE		I					5
Soc Stud Ed-Historical Perspectives	BSED	SSTD	EDSE	HISE	I					34
Elementary Ed MSEd	MSED	ELED	EDMS		I	32	26	23	17	15
Secondary Ed. MSEd	MSED	SEED	EDMS		I	30	24	14	14	13
Elem Ed-Trans to Teaching (Grad)	NDG	ELED	EDNG		I		15	14	10	1
Elementary Ed Cert(Grad T2T)	NDG	ELED	EDNG		I	14	--	--	--	--
Pre-Elementary Ed MSEd	NDG	ELEN	EDEM		I	7	9	5	3	7
Sec. Ed.-Trans to Teaching (Grad)	NDG	SEED	EDNG		I		10	16	7	1
Secondary Ed Cert. (Grad T2T)	NDG	SEED	EDNG		I	8	--	--	--	--
Pre-Secondary Ed. MSEd	NDG	SEEN	EDEM		I	<u>11</u>	<u>10</u>	<u>8</u>	<u>2</u>	<u>1</u>
EDES Total						1,065	1,100	980	780	660
Health/Physical Ed/Rec (HPER)										
HPER Transfer, Undergrad.	ND	HPRU	EUIX		I	<u>7</u>	<u>2</u>	<u>5</u>	<u>3</u>	<u>1</u>

TABLE 16
STUDENTS BY ACADEMIC UNIT, MAJOR AND PROGRAMS
FALL SEMESTERS, 2008-2012, continued

Description	Degr	Major	Prog	Conct	Uni v	2008	2009	2010	2011	2012
HPER Total						7	2	5	3	1
Professional Studies (EDPS)										
Counseling	MSED	CNSM	EDMS		I	1	0	0	0	0
Counseling - Marriage/Family Ther.	MSED	CNSM	EDMM	MCFN	I	37	34	38	42	39
Counseling - School Counseling	MSED	CNSM	EDMM	SCCN	I	35	34	37	34	31
Pre-Counseling, MSED	NDG	CNSN	EDEM		I	0	0	0	0	0
Educational Ldrshp.	MSED	EDLD	EDMS		I	72	64	54	52	25
Pre-Educational Ldrshp. MSED	NDG	EDLN	EDEM		I	5	12	1	1	2
Special Education, MSED	MSED	SPED	EDMS		I	20	28	28	32	29
Special Education - Grad Cert	CERT	SPDC	EDCG		I		1	2	0	0
Pre-Special Education, MSED	NDG	SPEN	EDEM		I	<u>12</u>	<u>13</u>	<u>9</u>	<u>4</u>	<u>9</u>
EDPS Total						182	186	169	165	135
Public Policy (PPOL)										
Pre-Crim Justice Admin & Policy	NDG	PMGN	MPNP	CJAD	I	0	0	0	0	0
Criminal Justice	BSPA	CRMJ	PPFB		I	79	154	239	296	254
Criminal Justice MPA	MPA	PAFF	MPPA	CRMJ	I	2	2	1	0	0
Crim Justice Adm & Policy MPM	MPM	PMGM	MPPM	CJAD	I	4	3	5	1	0
Environmental Policy	BSPA	ENVP	PPFB		I	7	18	26	29	34
Health Svcs Admin	BSPA	HSAB	PPFB		I	17	49	76	110	103
Health Systems Admin.	MPA	PAFF	MPPA	HSAM	I	3	5	4	5	8
Health Systems Adm & Pol MPM	MPM	PMGM	MPPM	HADM	I	9	10	9	17	11
Legal Studies	BSPA	LGPA	PPFB		I	12	20	26	31	20
Pre-Health Syst Admin. MPA	NDG	PAFN	MPPP	HSAM	I	0	0	0	0	0
Pre-Criminal Justice MPA	NDG	PAFN	MPPP	CRMJ	I	0	0	0	0	0
Pre-Public Management MPA	NDG	PAFN	MPPP	MGPA	I	0	1	0	0	0
Pre-Public Affairs - Bach.	ND	PBPA	PPFP		I	230	190	98	33	44
Pre-Health Systems Ad & Pol	NDG	PMGN	MPNP	HADM	I	0	0	0	0	0
Pre-Public Adm & Pol	NDG	PMGN	MPNP	PADM	I	1	0	0	0	1
Pre-Criminal Justice - Bach.	ND	PCJB	PPFP		I	1	1	0	0	0
Public Admin & Policy MPM	MPM	PMGM	MPPM	PADM	I	10	10	13	15	12
Public Management	MPA	PAFF	MPPA	MGPA	I	8	8	14	9	5
Public Management	BSPA	MGPA	PPFB		I	10	15	25	20	18
Public Mgmt., Grad Cert.	CERT	PMGC	PPGC		I	8	6	1	0	8
Risk & Emergency Mgmt, Cert.	CERT	RMGC	REMC		I	0	0	0	0	0
Specialized Study	BSPA	SPEC	PPFB		I	0	0	0	0	0
#Criminal Justice	ASCJ	CRMJ	CRJA		I	1	1	0	0	0
#Criminal Justice	BSCJ	CRMJ	CPCJ	CRMJ	I	9	4	1	1	1
#Criminal Justice	BSCJ	CRMJ	CRJB		I	0	1	1	0	0
# Public Affairs	MPA	PAFF	MPPA		I	0	0	0	0	0
#Policy Analysis	MPA	PAFF	MPAM	POLM	I	0	0	0	0	0
#Pre-Criminal Justice, AS	ND	PCJA	PEAP		I	<u>0</u>	<u>0</u>	<u>0</u>	<u>0</u>	<u>0</u>
Public Policy Total						411	498	539	567	519
COLLEGE OF EDUCATION & PUBLIC POLICY TOTAL						1,828	1,953	1,808	1,610	1,391
COLLEGE OF ENGINEERING, TECHNOLOGY, AND COMPUTER SCIENCE (ET)										
Computer Science (CS)										
Applied Computer Science	MS	ACS	ACSM		P	26	27	30	24	17
Pre-Applied Computer Sci	NDG	ACSN	ACSP		P	3	3	2	2	3
# Computer Science	AS	CS	CSCA		P	78	45	27	14	6

TABLE 16
STUDENTS BY ACADEMIC UNIT, MAJOR AND PROGRAMS
FALL SEMESTERS, 2008-2012, continued

Description	Degr	Major	Prog	Conct	Uni	2008	2009	2010	2011	2012
					v					
Computer Science	BA	CS	CSBA		P			7	10	13
Computer Science	BS	CS	CSCB		P	92	149	175	182	198
Computer Science, Non-Deg.	ND	CSND	CSCN		P	1	3	2	2	0
Information Systems	AS	INSY	ISYA		P	39	54	71	58	43
Information Systems	BS	INSY	ISYB		P	25	17	22	37	34
CS Total						264	298	336	329	314
Computer, Electrical, & Information Technology (TECH)										
Adv. Microprocessors	CERT	AMPC	AMPC		P	0	0	0	0	0
Computer Controlled Systems	CERT	CCSC	CCSC		P	0	0	1	1	0
Computer Engineering Tech.	BS	CPET	CGTB		P	77	92	100	92	85
Computer Networking	CERT	CNWC	CNWC		P	0	1	1	1	0
Elec. Engr. Tech.	AS	EET	EETA		P	91	101	104	82	59
Electrical Engr. Tech.	BS	EET	EETB		P	32	30	25	47	49
Electronic Communications	CERT	ELCC	ELCC		P	0	0	0	0	0
Information Technology BS	BS	INFT	IFTB		P	--	--	--	--	39
ECET Total						200	224	231	223	232
Engineering (ENGR)										
Aeronaut. & Astro. Engr.	ND	PAAE	ETPX		P	0	0	0	0	0
Agricultural Engr.	ND	PAGE	ETPX		P	0	0	0	0	0
Chemical Engineering	ND	PCHE	ETPX		P	0	0	0	0	0
Civil Engineering	ND	PCE	ETPX		P	0	0	0	0	0
Civil Engineering	BSCE	CE	ECEB		P	14	21	27	42	44
Computer Engineering	BSCPE	CPE	ENCB		P	14	17	13	11	18
Electrical Engineering	BSEE	EE	ENEB		P	40	39	37	42	47
Engineering, Non-Deg.	ND	ENND	ENRN		P	0	0	0	0	0
Pre-Engineering	ND	ENGP	ENRP		P	12	18	30	20	9
Freshman Engineering	ND	FENR	ENRP		P	162	192	211	182	203
Industrial Engr.	ND	PIE	ETPX		P	0	0	0	1	0
Interdisciplinary Engineering	MSE	ENGR	ENRM		P	13	2	4	0	0
Interdisciplinary Engr - Computer	MSE	ENGR	ENRM	CPEN	P	0	0	3	3	3
Interdisciplinary Engr - Electrical	MSE	ENGR	ENRM	ECEN	P	1	8	14	14	15
Interdisciplinary Engr - Mechanical	MSE	ENGR	ENRM	MCEN	P	2	4	3	3	3
Interdisciplinary Engr - Systems	MSE	ENGR	ENRM	SYEN	P	7	19	14	15	11
Pre-Interdisciplinary Engineering	ND	ENRN	ENMP		P	2	7	10	3	4
Materials Engr.	ND	PMSE	ETPX		P	0	0	0	0	0
Mechanical Engr.	BSME	ME	ENMB		P	66	87	87	98	111
Systems Engr., Grad Cert	CERT	SYEC	ENRC		P	--	0	0	0	0
ENGR Total						333	414	453	434	468
Engineering, Technology, and Computer Science Special Students (ENTS)										
Technology, MS-Facilities/Cnst Mgt	MS	TECH	ETUM	FCMG	P	0	1	1	0	1
Technology, MS- Indus. Tech/Mnuf.	MS	TECH	ETUM	INTM	P	7	13	11	7	3
Tech, MS-Info Tech/Adv Comp App	MS	TECH	ETUM	ITCA	P	8	8	5	8	6
Tech, MS-Undeclared Conc.	MS	TECH	ETUM		P	2	2	1	4	6
Pre-Technology, MS	NDG	TECN	ETUP		P	2	2	1	1	2
Technology, Undecided	ND	UND	ETUN		P	40	39	37	29	26
ENTS Total						59	65	56	49	44
Manufacturing and Construction Engineering Technology and Interior Design (MCET)										
Advanced Manuf Mgmt Cert	CERT	ADMF	MFTC		P		0	0	0	0
Architectural Engr. Tech.	AS	ARET	ARTA		P	70	74	95	89	52

TABLE 16
STUDENTS BY ACADEMIC UNIT, MAJOR AND PROGRAMS
FALL SEMESTERS, 2008-2012, continued

Description	Degr	Major	Prog	Conct	Uni	2008	2009	2010	2011	2012
					v					
Civil Engr. Tech.	AS	CVET	CETA		P	52	56	45	50	33
Construction Engr. Tech.	BS	CNET	CNTB		P	28	26	26	24	44
Indus. Engr. Tech. AS	AS	IET	IETA		P	23	15	26	25	18
Indus. Engr. Tech.	BS	IET	IETB		P	7	7	11	12	13
Interior Design	AS	INTR	INTA		P	80	80	69	60	30
Interior Design	BS	INTR	INTB		P	12	17	24	20	23
Mech. Engr. Tech.	AS	MET	META		P	148	156	158	175	138
Mech. Engr. Tech.	BS	MET	METB		P	35	45	40	52	75
Quality , Cert.	CERT	QLTC	QLTC		P	<u>1</u>	<u>2</u>	<u>0</u>	<u>1</u>	<u>0</u>
MCET Total						456	478	494	508	426
Organizational Leadership and Supervision (OLS)										
Org. Leadership & Spv.	AS	OLS	OLA		P	77	47	36	30	19
Org. Leadership & Spv.	BS	OLS	OLB		P	202	248	271	286	281
Org. Leadership & Spv.	MS	OLS	OLM		P	18	25	1	2	10
Org. Leadership & Spv. - HR	MS	OLS	OLM	HMRS	P	2	4	13	10	4
Org. Leadership & Spv. - Leadership	MS	OLS	OLM	LDRS	P	2	5	23	24	13
Org. Leadership Grad Cert.	CERT	OLGC	OLG		P	0	0	0	0	0
Pre-Org. Leadership & Spv. MS	NDG	OLSN	OLP		P	4	1	0	0	1
Supervisory Ldrshp. Cert.	CERT	OLSC	OLC		P	<u>9</u>	<u>3</u>	<u>4</u>	<u>1</u>	<u>2</u>
OLS Total						314	333	348	353	330
<i>COLLEGE OF ENGINEERING, TECHNOLOGY AND COMPUTER SCIENCE</i>						<i>1,626</i>	<i>1,812</i>	<i>1,918</i>	<i>1,896</i>	<i>1,814</i>
COLLEGE OF HEALTH AND HUMAN SERVICES (HS)										
Allied Health and IU Nursing (AHLT)										
Health Sciences Ed.-Grad.	NDG	HSG	HSMN		I	0	0	0	0	0
Nursing-IU Transfer	ND	NURS	HSIX		I	0	0	0	0	1
Pre-Cytotechnology	ND	PCYT	HSIX		I	1	2	1	1	0
Pre-Health Info. Admin.	ND	PHIA	HSIX		I	2	2	3	2	3
Pre-Medical Imaging Tech.	ND	PMIT	HSIX		I	1	3	2	2	2
Pre-Medical Tech	ND	MT	HSIX		I	0	0	0	0	0
Pre-Nuclear Med. Tech.	ND	PNMT	HSIX		I	3	2	1	0	2
Pre-Occupational Therapy	ND	POCT	HSIX		I	0	1	0	0	0
Pre-Paramedic Science	ND	PPAR	HSIX		I	0	1	3	0	3
Pre-Radiation Therapy	ND	PRAD	HSIX		I	7	2	4	2	2
Pre-Respiratory Thpy. Bach.	ND	PRTB	HSIX		I	3	6	5	4	2
Undecided Allied Health	ND	UND	HSIX		I	<u>4</u>	<u>3</u>	<u>0</u>	<u>1</u>	<u>1</u>
AHLT Total						21	22	19	12	16
Consumer and Family Sciences (CFS)										
Home Econ-PU Transfer	ND	HEC	CFPX		P	7	9	12	11	4
Hospitality Management	BS	HTM	CFSB		P	130	152	111	80	65
Pre-Hospitality Management	ND	HTM	CFSP		P			31	74	63
# Hotel, Rest. & Trsm. Mgt. AS	AS	HTM	CFSA		P	<u>16</u>	<u>17</u>	<u>5</u>	<u>1</u>	<u>0</u>
CFS Total						153	178	159	166	132
Dental Education (DAE)										
Dental Assisting, Cert.	CERT	DNAC	DNAC		I	24	27	26	24	23
Dental Hygiene	ASDH	DHYG	DNTA		I	58	59	58	57	56
Dental Lab. Tech.	ASDL	DLTP	DNLA		I	33	46	44	42	40
Pre-Dental Assisting	ND	DNAC	DNTP		I	25	22	21	21	17
Pre-Dental Hygiene	ND	DHYG	DNTP		I	101	115	95	109	77
Pre-Dental Lab Tech	ND	DLTP	DNLP		I	<u>3</u>	<u>4</u>	<u>11</u>	<u>12</u>	<u>5</u>

TABLE 16
STUDENTS BY ACADEMIC UNIT, MAJOR AND PROGRAMS
FALL SEMESTERS, 2008-2012, continued

Description	Degr	Major	Prog	Conct	Uni v	2008	2009	2010	2011	2012
DAE Total						244	273	255	265	218
Health Sciences (HSC)										
Health Sciences/Undecided	ND	UND	HSIN		I	56	68	52	55	59
Health Sciences/Undecided	ND	UND	HSPN		P	28	22	17	31	20
Pre-Radiography	ND	RAD	HSRP		I	127	158	176	134	106
Radiography	ASR	RAD	HSRA		I	<u>30</u>	<u>26</u>	<u>31</u>	<u>38</u>	<u>39</u>
HSC Total						241	274	276	258	224
Human Services (HSRV)										
Human Services	BS	HSV	HSVB		P	53	158	134	128	118
Human Svcs Actvty Rec Ther	BS	HSV	HSVB	HSAT	P	0	0	0	0	0
Human Svcs Addictions	BS	HSV	HSVB	HSAD	P	0	0	0	0	0
Human Svcs AgencyLdrshp	BS	HSV	HSVB	HSAL	P	0	0	0	0	0
Human Svcs Child Adol Svcs	BS	HSV	HSVB	HSCS	P	2	0	0	0	0
Human Svcs Devel Disabil.	BS	HSV	HSVB	HSDD	P	0	0	0	0	0
Human Serv Psych Rehab	BS	HSV	HSVB	HSPR	P	0	0	0	0	0
Pre-Human Services	ND	HSV	HSVP		P	<u>80</u>	<u>15</u>	<u>88</u>	<u>140</u>	<u>130</u>
HSRV Total						135	173	222	268	248
Nursing (NUR)										
Acute Care Clincl Nurse Spec	ND	NURC	NUMN		P	0	0	0	0	0
Critical Care Nursing, Cert.	CERT	CCNC	CCNC		P	1	0	0	0	0
Family Nurse Practitioner	ND	NURP	NUMN		P	0	0	0	0	0
Nursing Admn, Cert.	CERT	NUAC	NUAC		P	0	0	0	0	0
Nursing Admn/Calumet/MS	MS	NURL	NURM		P	0	0	0	0	0
Pre-Nursg Admn/Calumet/	NDG	NUCN	NUMP		P	0	0	0	0	0
Nursing Admin,	MS	NURS	NURM		P	1	0	0	0	0
Nursing Admin - Administration	MS	NURS	NURM	ADIM	P	9	14	5	0	0
Nursing Admin - Adult Nursing Prac	MS	NURS	NURM	ADNP	P	3	14	19	20	42
Nursing Admin - Nursing Education	MS	NURS	NURM	NUED	P	4	5	8	9	8
Nursing Admin - Nurse Executive	MS	NURS	NURM	NEXE	P				2	2
Nursing Admin - Women's Health	MS	NURS	NURM	WHNP	P	4	6	9	5	4
Pre-Nursng Admin, MS	NDG	NURN	NUMP		P	3	0	0	0	0
#Nursing	AS	NURS	NURA		P	185	107	33	4	0
Nursing	BS	NURS	NURB		P	68	40	34	40	36
Nursing Generic	BS	NURS	NURG		P	132	211	275	295	301
Nursing, Conditional Bach.	ND	NURS	NURN		P	3	28	20	3	2
Pre-Nursing	ND	NURS	NURP		P	<u>439</u>	<u>429</u>	<u>448</u>	<u>424</u>	<u>377</u>
NUR Total						852	854	851	802	772
COLLEGE OF HEALTH AND HUMAN SERVICES TOTAL						1,646	1,774	1,782	1,771	1,610
DIVISION OF LABOR STUDIES (LS)										
Labor Studies (LBS)										
Labor Studies,	ASLS	LS	LSTA		I	2	5	2	3	2
Labor Studies,	BSLS	LS	LSTB		I	3	2	0	2	4
Labor Studies, Cert.	CLBS	LSTC	LSTC		I	0	0	0	0	0
Labor Studies, Non-Deg.	ND	LSN	LSTN		I	<u>0</u>	<u>1</u>	<u>0</u>	<u>0</u>	<u>0</u>
DIVISION OF LABOR STUDIES TOTAL						5	8	2	5	6
UNIT OF AFFILIATED PROGRAMS (UA)										
Conditional Admissions (CNAD)										
High School Student - Non-Degree	ND	HSN	IHSN		I		949	1,407	1,899	2,438

TABLE 16
STUDENTS BY ACADEMIC UNIT, MAJOR AND PROGRAMS
FALL SEMESTERS, 2008-2012, continued

Description	Degr	Major	Prog	Conct	Uni	2008	2009	2010	2011	2012
					v					
High School Student - Non-Degree	ND	HSN	PHSN		P		309	72	4	0
Non-Degree Conditional	ND	CDN	ICDN		I	566	1	1	0	0
Non-Degree Conditional	ND	CDN	PCDN		P	<u>163</u>	<u>2</u>	<u>0</u>	<u>1</u>	<u>0</u>
CNAD Total						729	1,261	1,480	1,904	2,438
Mastodon Advising Center (MAC)										
Business-Conditional	ND	BCND	INDN		I	11	2	1	2	1
Conditional/Exploring-IU	ND	CADM	UACI		I					207
Conditional/Exploring-PU	ND	CADM	UACP		P					186
English as a Second Language	ND	ESL	ESIP		I	21	15	13	38	36
English as a Second Language	ND	ESL	ESPP		P	37	26	24	46	46
Exploring Agriculture	ND	XAGR	PEXN		P	3	5	3	3	0
Exploring Anthropology	ND	XANT	IEXN		I	0	2	1	3	0
Exploring Arch Engr Tech	ND	XARE	PEXN		P	5	5	8	4	0
Exploring Art Education	ND	XFAE	IEXN		I	5	4	2	5	0
Exploring AS Undecided-IU	ND	XASI	IEXN		I	8	4	3	3	0
Exploring AS Undecided-PU	ND	XASP	PEXN		P	3	4	4	2	1
Exploring Biology	ND	XBIO	PEXN		P	19	23	23	20	1
Exploring Business	ND	XPBS	IEXN		I	107	98	79	60	6
Exploring Chemistry	ND	XCHM	PEXN		P	7	6	7	7	0
Exploring Civil Engr Tech	ND	XCVT	PEXN		P	3	0	4	4	0
Exploring Communication	ND	XCOM	PEXN		P	12	14	16	23	5
Exploring Comp Engr Tech	ND	XCPT	PEXN		P	6	5	7	6	0
Exploring Computer Science	ND	XCS	PEXN		P	9	16	11	17	3
Exploring Communication Sci Dis	ND	XCSD	PEXN		P	6	11	3	1	0
Exploring Dental Assisting	ND	XDNA	IEXN		I	4	9	4	4	0
Exploring Dental Hygiene	ND	XDHY	IEXN		I	23	29	19	29	4
Exploring Dental Lab Tech	ND	XDLT	IEXN		I	4	3	2	0	0
Exploring Early Childhood Educ	ND	XECE	IEXN		I	7	10	1	0	0
Exploring Economics	ND	XECO	IEXN		I			1	0	0
Exploring Electrical Engr Tech	ND	XEET	PEXN		P	3	2	3	5	0
Exploring Elementary Educ	ND	XELE	IEXN		I	55	53	71	40	6
Exploring Engineering	ND	XENR	PEXN		P	48	51	61	36	1
Exploring English	ND	XENG	IEXN		I	8	12	8	3	2
Exploring English Teaching	ND	XENT	IEXN		I	0	0	1	1	1
Exploring Fine Arts	ND	XFIN	IEXN		I	8	8	9	10	3
Exploring French	ND	XFRE	IEXN		I	0	0	0	0	0
Exploring General Studies	ND	XGNS	IEXN		I	2	2	1	3	0
Exploring Geology	ND	XGEO	IEXN		I	1	2	0	0	0
Exploring German	ND	XGER	IEXN		I	0	0	0	0	0
Exploring Health, P.E. & Rec	ND	XHPR	IEXN		I	0	1	1	2	0
Exploring HS Undecided-IU	ND	XHSI	IEXN		I	12	9	6	14	0
Exploring HS Undecided-PU	ND	XHSP	PEXN		P	9	3	6	2	0
Exploring History	ND	XHIS	IEXN		I	3	9	9	5	3
Exploring Home Economics	ND	XHEC	PEXN		P	1	0	0	0	0
Exploring Hospitality Mgmt	ND	XHTM	PEXN		P	7	7	2	9	1
Exploring Human Services	ND	XHSV	PEXN		P	6	6	9	13	8
Exploring Indust. Eng. Tech.	ND	XIET	PEXN		P	2	0	1	2	0
Exploring Information Systems	ND	XINS	PEXN		P	2	4	4	4	1

TABLE 16
STUDENTS BY ACADEMIC UNIT, MAJOR AND PROGRAMS
FALL SEMESTERS, 2008-2012, continued

Description	Degr	Major	Prog	Conct	Uni	2008	2009	2010	2011	2012
					v					
Exploring Interior Design	ND	XINT	PEXN		P	5	5	7	2	1
Exploring Journalism	ND	XJOU	IEXN		I	5	3	7	3	0
Exploring Labor Studies	ND	XLST	IEXN		I	0	0	0	0	0
Exploring Mathematics	ND	XMA	PEXN		P	0	3	1	0	1
Exploring Math Teaching	ND	XMTT	PEXN		P	2	2	4	0	0
Exploring Mech Engr Tech	ND	XMET	PEXN		P	8	5	7	5	0
Exploring Music	ND	XMUS	IEXN		I	7	8	18	9	0
Exploring Music Teaching	ND	XMUE	IEXN		I		2	0	0	0
Exploring Nursing	ND	XNUR	PEXN		P	80	87	99	93	3
Exploring Org Leadership & Spv	ND	XOLS	PEXN		P	4	7	4	2	3
Exploring Philosophy	ND	XPHI	PEXN		P		1	3	0	0
Exploring Physics	ND	XPHY	PEXN		P	1	1	1	0	0
Exploring Political Science	ND	XPOL	IEXN		I	4	4	4	4	0
Exploring Pre-Forestry	ND	XPFR	PEXN		P	2	2	1	1	1
Exploring Pre-Occupational Therapy	ND	XOCT	IEXN		I	0	0	0	0	0
Exploring Pre-Pharmacy	ND	XPPH	PEXN		P	4	7	2	0	0
Exploring Pre-Radiation Therapy	ND	XPRT	IEXN		I	0	1	0	0	0
Exploring Pre-Respiratory Therapy	ND	XPRS	IEXN		I	0	0	1	0	0
Exploring Pre-Vet Science	ND	XPVT	PEXN		P	9	7	5	9	0
Exploring Pre-Vet Tech	ND	XVTT	PEXN		P	0	0	1	1	0
Exploring Psychology	ND	XPSY	PEXN		P	28	27	40	37	3
Exploring Public Affairs	ND	XPAF	IEXN		I	29	45	45	41	11
Exploring Radiography	ND	XRAD	IEXN		I	16	13	12	9	2
Exploring Secondary Educ	ND	XSED	IEXN		I	19	18	22	13	2
Exploring Sociology	ND	XSOC	IEXN		I	1	3	3	1	0
Exploring Spanish	ND	XSPA	IEXN		I	2	1	0	0	0
Exploring Spanish Teaching	ND	XSPT	IEXN		I	0	1	1	1	1
Exploring Theatre	ND	XTHR	PEXN		P	6	8	5	5	1
Exploring Undecided IU	ND	XUNI	IEXN		I	50	70	81	91	20
Exploring Undecided PU	ND	XUNP	PEXN		P	81	73	88	73	25
Exploring VPA Undecided	ND	XVPA	IEXN		I	4	2	3	2	0
Exploring Visual Comm & Design	ND	XVCD	IEXN		I	24	29	26	17	4
Exploring Women's Studies (IU)	ND	XWSI	IEXN		I	0	0	0	0	0
Exploring Women's Studies (PU)	ND	XWSP	PEXN		P	1	0	1	0	0
# Guided Studies	ND	GST	INDN		I	1	0	0	0	0
# Guided Studies	ND	GST	PURN		P	2	0	0	0	0
Industrial Tech.-Transfer	ND	PITT	UAPX		P	0	0	0	0	0
Management-Transfer	ND	PMGT	UAPX		P	5	4	5	1	0
Non-Degree No Option	ND	NDN	INDN		I	25	24	9	12	16
Non-Degree No Option	ND	NDN	PURN		P	20	23	20	13	13
# Pre-Business Assoc.	ND	PBSA	INDP		I	10	5	3	0	0
# Pre-Business Bach.	ND	PBSB	INDP		I	82	34	48	26	47
Pre-Education	ND	PEDU	INDP		I	33	31	51	33	36
Pre-Org. Leadership & SPV	ND	OLSP	PURP		P	3	1	1	3	4
Undecided Exploratory	ND	UND	INDN		I	255	340	420	404	390
Undecided Exploratory	ND	UND	PURN		P	323	327	324	325	282
ACCS Total						1,618	1,684	1,801	1,662	1,388
<i>UNIT OF AFFILIATED PROGRAMS TOTAL</i>						2,347	2,945	3,281	3,566	3,826

TABLE 16
STUDENTS BY ACADEMIC UNIT, MAJOR AND PROGRAMS
FALL SEMESTERS, 2008-2012, continued

Description	Degr	Major	Prog	Conct	Uni v	2008	2009	2010	2011	2012
COLLEGE OF VISUAL AND PERFORMING ARTS (VP)										
Visual and Performing Arts Special Students (VPAS)										
Undecided Fine & Per. Arts	ND	VPAU	VPAN		I	<u>1</u>	<u>3</u>	<u>4</u>	<u>2</u>	<u>1</u>
VPAS Total						1	3	4	2	1
Fine Arts (FINA)										
F.A., Ceramics	BFA	FINA	FARB	CRMC	I	2	2	1	1	3
# F.A., Crafts	BFA	FINA	FARB	CRFT	I	1	0	0	0	0
F.A., Drawing	BFA	FINA	FARB	DRAW	I	0	0	0	0	1
F.A., Metals	BFA	FINA	FARB	METL	I	0	1	1	1	0
F.A., Painting	BFA	FINA	FARB	PNTG	I	7	4	4	5	3
F.A., Printmaking	BFA	FINA	FARB	PRNT	I	2	1	1	2	4
F.A., Sculpture	BFA	FINA	FARB	SCLP	I	3	2	2	0	0
Fine Arts	BA	FINA	FAAB		I	45	72	75	81	82
Fine Arts, Undeclared	BFA	FINA	FARB		I	1	2	1	0	4
Art Education	BA	FINE	FAAB		I	73	62	45	44	43
Fine Arts, Pre-BFA	ND	FINA	FARP		I	34	14	0	0	0
Fine Arts, Special	ND	FINA	FARN		I	<u>0</u>	<u>0</u>	<u>0</u>	<u>0</u>	<u>1</u>
FINA Total						168	160	130	134	141
Music (MUS)										
Choral Teaching	BME	MUED	MMEB	TCHC	I	15	12	6	6	11
Instrumental Teaching	BME	MUED	MMEB	TCHI	I	18	30	22	22	23
Music and an Outside Field	BSM	MUS	MUSB		I	22	18	25	35	43
Music Therapy	BSMT	MTHP	MTHB		I	22	24	24	22	40
Music Therapy Equiv.	ND	MTE	MTHN		I	0	0	0	0	0
Non-Degree Music	ND	MUSN	MUSN		I	0	1	1	0	0
Music	BM	MUS	MBMB		I	5	3	3	1	1
Music, Undeclared	BME	MUED	MMEB		I	12	13	22	19	5
Orchestral Inst.	BM	MUS	MBMB	ORCH	I	3	3	4	6	8
Piano	BM	MUS	MBMB	PIAN	I	4	5	4	4	4
Piano Accompanying	BM	MUS	MBMB	PIAC	I	0	0	0	0	0
Piano Pedagogy, Cert.	CERT	MPPC	MPPC		I	0	0	0	0	0
Pre-Music	ND	MUS	MUSP		I	19	28	51	57	35
Pre-Music Therapy	ND	MTHP	MTHP		I	0	0	1	1	2
Teaching Area	BME	MUED	MMEB	TCHA	I	1	0	0	0	0
Undecided Music	ND	UND	MUSN		I	0	0	0	0	0
Voice	BM	MUS	MBMB	VOIC	I	<u>4</u>	<u>4</u>	<u>4</u>	<u>7</u>	<u>7</u>
MUS Total						125	141	167	180	179
Theatre (THTR)										
Theatre	BA	THTR	THTB		P	54	62	50	48	41
Theatre-Acting	BA	THTR	THTB	ACTG	P	0	0	0	0	0
Theatre-Design Tech.	BA	THTR	THTB	DSGT	P	0	0	0	0	0
Theatre-Directing	BA	THTR	THTB	DRCT	P	0	0	0	0	0
Theatre-Indiv. Conc.	BA	THTR	THTB	INDV	P	0	0	0	0	0
Theatre-Special	ND	THTS	THTN		P	0	0	1	0	0
Theatre Teaching	BA	THTT	THTB		P	<u>0</u>	<u>0</u>	<u>0</u>	<u>0</u>	<u>0</u>
THTR Total						54	62	51	48	41
Visual Communication and Design (VCD)										
Commercial Art	ASCA	COMA	COMA		I	22	20	18	12	7
F.A., Computer Art	BFA	VCD	VCDB	CMPA	I	41	39	47	47	46
F.A., Graphic Design	BFA	VCD	VCDB	GRPH	I	151	172	177	195	196

TABLE 16
STUDENTS BY ACADEMIC UNIT, MAJOR AND PROGRAMS
FALL SEMESTERS, 2008-2012, continued

Description	Degr	Major	Prog	Conct	Uni v	2008	2009	2010	2011	2012
F.A., Photography	BFA	VCD	VCDB	PHOT	I	44	46	60	76	76
F.A., VCD Undeclared Conct	BFA	VCD	VCDB		I	<u>25</u>	<u>33</u>	<u>42</u>	<u>26</u>	<u>13</u>
VCD Total						283	310	344	356	338
<i>COLLEGE OF VISUAL AND PERFORMING ARTS TOTAL</i>						631	676	696	720	700
 <i>IPFW TOTAL</i>						 12,338	 13,675	 14,192	 14,326	 13,771

Closed to New Students

TABLE 17
SUMMER SESSION ENROLLMENT
BY CLASS STANDING and BY RESIDENCY
SUMMER SESSIONS, 2011 AND 2012

<u>Class Standing</u>	-----2011-----			-----2012-----		
	<u>Summer 1</u>	<u>Summer 2</u>	<u>Total</u>	<u>Summer 1</u>	<u>Summer 2</u>	<u>Total</u>
Freshman	620	527	1,147	487	417	904
Sophomore	735	482	1,217	592	347	939
Junior	544	418	962	464	351	815
Senior	950	728	1,678	979	640	1,619
Undergraduate, Non-Degree	76	128	204	90	88	178
Graduate	249	213	462	249	186	435
Graduate, Non-Degree	<u>25</u>	<u>72</u>	<u>97</u>	<u>14</u>	<u>15</u>	<u>29</u>
TOTAL	3,199	2,568	5,767	2,875	2,044	4,919
Undergraduate, Resident	2,748	2,127	4,875	2,429	1,706	4,135
Undergraduate, Non-Resident	177	156	333	183	137	320
Graduate, Resident	263	277	540	256	189	445
Graduate, Non-Resident	<u>11</u>	<u>8</u>	<u>19</u>	<u>7</u>	<u>12</u>	<u>19</u>
TOTAL	3,199	2,568	5,767	2,875	2,044	4,919

TABLE 18
ENROLLMENT BY SEX AND STATUS
FALL SEMESTERS, 1982-2012

<u>Year</u>	<u>Full-Time Men</u>	<u>Full-Time Women</u>	<u>Part-Time Men</u>	<u>Part-Time Women</u>	<u>Total Men</u>	<u>Total Women</u>	<u>Married %</u>	<u>Single %</u>	<u>Total</u>
1982	2,123	2,006	2,609	3,420	4,732	5,426	37.4%	62.6%	10,158
1983	2,176	2,119	2,657	3,524	4,833	5,643	37.3%	62.7%	10,476
1984	1,972	1,989	2,710	3,514	4,682	5,503	37.4%	62.6%	10,185
1985	1,811	1,931	2,905	3,687	4,716	5,618	38.0%	62.0%	10,334
1986	1,730	1,884	2,814	3,754	4,544	5,638	38.5%	61.5%	10,182
1987	1,801	1,957	2,946	3,877	4,747	5,834	39.1%	60.9%	10,581
1988	1,906	2,170	3,013	3,984	4,919	6,154	38.2%	61.8%	11,073
1989	2,019	2,336	3,129	3,938	5,148	6,274	36.8%	63.2%	11,422
1990	2,135	2,489	3,125	4,130	5,260	6,619	36.4%	63.6%	11,879
1991	2,287	2,699	3,048	4,043	5,335	6,742	35.3%	64.7%	12,077
1992	2,312	2,754	2,921	4,103	5,233	6,857	34.8%	65.2%	12,090
1993	2,261	2,768	2,722	3,950	4,983	6,718	34.1%	65.9%	11,701
1994	2,288	2,775	2,698	3,752	4,986	6,527	32.8%	67.2%	11,513
1995	2,113	2,669	2,678	3,551	4,791	6,220	30.1%	69.9%	11,011
1996	2,178	2,703	2,487	3,381	4,665	6,084	28.5%	71.5%	10,749
1997	2,147	2,732	2,504	3,286	4,651	6,018	26.7%	73.3%	10,669
1998	2,289	2,804	2,432	3,128	4,721	5,932	24.1%	75.9%	10,653
1999	2,314	2,899	2,310	3,033	4,624	5,932	21.4%	78.6%	10,556
2000	2,275	3,031	2,245	2,981	4,520	6,012	17.8%	82.2%	10,532
2001	2,540	3,246	2,229	3,114	4,769	6,360	14.5%	85.5%	11,129
2002	2,703	3,577	2,223	3,254	4,926	6,831	13.2%	86.8%	11,757
2003	2,764	3,668	2,162	3,212	4,926	6,880	13.0%	87.0%	11,806
2004	2,963	3,775	2,007	3,065	4,970	6,840	12.6%	87.4%	11,810
2005	3,071	3,845	1,989	2,890	5,060	6,735	11.3%	88.7%	11,795
2006	3,185	3,899	1,865	2,723	5,050	6,622	10.8%	89.2%	11,672
2007	3,269	4,138	1,874	2,662	5,143	6,800	10.3%	89.7%	11,943
2008	3,445	4,227	1,969	2,697	5,414	6,924	9.3%	90.7%	12,338
2009	3,877	4,663	2,218	2,917	6,095	7,580	8.0%	92.0%	13,675
2010	4,164	4,843	2,183	3,002	6,347	7,845	8.4%	91.6%	14,192
2011	3,943	4,767	2,447	3,169	6,390	7,936	8.0%	92.0%	14,326
2012	3,653	4,355	2,468	3,295	6,121	7,650	7.5%	92.5%	13,771

TABLE 19
ENROLLMENT HISTORY
1971-72 through 2012-13

<u>Year</u>	<u>Fall</u>	<u>Spring</u>	<u>Summer I</u>	<u>Summer II</u>	<u>Summer Total</u>	<u>TOTAL</u>
1971-72	7,156	6,896			3,097	17,149
1972-73	7,443	7,391			3,443	18,277
1973-74	7,821	7,441			3,592	18,854
1974-75	8,128	7,878			3,736	19,742
1975-76	8,961	8,418			3,676	21,055
1976-77	9,193	8,660	2,119	2,017	4,136	21,989
1977-78	9,357	8,377	2,246	2,045	4,291	22,025
1978-79	9,015	8,191	2,127	2,073	4,200	21,406
1979-80	9,191	8,689	2,461	2,278	4,739	22,619
1980-81	10,182	9,465	2,794	2,202	4,996	24,643
1981-82	10,383	9,572	2,573	2,292	4,865	24,820
1982-83	10,158	9,746	2,525	2,380	4,905	24,809
1983-84	10,476	9,628	2,406	2,267	4,673	24,777
1984-85	10,185	9,380	2,474	2,270	4,744	24,309
1985-86	10,334	9,334	2,416	2,313	4,729	24,397
1986-87	10,182	9,626	2,548	2,189	4,737	24,545
1987-88	10,581	10,086	2,908	2,378	5,286	25,953
1988-89	11,073	10,340	2,846	2,460	5,306	26,719
1989-90	11,422	10,751	3,084	2,389	5,473	27,646
1990-91	11,879	11,092	2,954	2,614	5,568	28,539
1991-92	12,077	11,216	3,133	2,524	5,657	28,950
1992-93	12,090	11,267	3,030	2,561	5,591	28,948
1993-94	11,701	10,934	2,979	2,270	5,249	27,884
1994-95	11,513	10,550	3,010	2,186	5,196	27,259
1995-96	11,011	10,120	2,956	2,088	5,044	26,175
1996-97	10,749	10,077	2,910	2,314	5,224	26,050
1997-98	10,669	9,920	3,121	2,058	5,179	25,768
1998-99	10,653	9,897	3,193	2,140	5,333	25,883
1999-2000	10,556	9,793	3,119	2,133	5,252	25,601
2000-01	10,532	9,841	3,378	2,351	5,729	26,102
2001-02	11,129	10,625	3,495	2,610	6,105	27,859
2002-03	11,757	11,056	3,646	2,537	6,183	28,996
2003-04	11,806	11,126	3,440	2,582	6,022	28,954
2004-05	11,810	11,072	3,294	2,460	5,754	28,636
2005-06	11,795	10,740	3,363	2,437	5,800	28,335
2006-07	11,672	10,963	3,257	2,308	5,565	28,200
2007-08	11,943	11,239	3,176	2,395	5,571	28,753
2008-09	12,338	11,615	3,284	2,713	5,997	29,950
2009-10	13,675	12,636	3,359	2,727	6,086	32,397
2010-11	14,192	12,434	3,199	2,568	5,767	32,393
2011-12	14,326	13,646	2,875	2,044	4,919	32,891
2012-13	13,771					

TABLE 20
CREDIT HOUR HISTORY
1971-72 through 2012-13

<u>Year</u>	<u>Fall</u>	<u>Spring</u>	<u>Summer I</u>	<u>Summer II</u>	<u>Summer Total</u>	<u>TOTAL</u>
1971-72	68,546	63,258			14,004	145,808
1972-73	69,201	65,048			15,163	149,412
1973-74	71,269	66,103			17,730	155,102
1974-75	72,476	70,223			18,017	160,716
1975-76	81,680	76,693			18,271	176,644
1976-77	81,219	75,194	8,069	8,914	16,983	173,396
1977-78	81,820	72,283	8,465	8,584	17,049	171,152
1978-79	76,640	67,603	7,840	8,350	16,190	160,433
1979-80	77,653	72,980	9,192	9,282	18,474	169,107
1980-81	86,440	80,318	10,349	8,938	19,287	186,045
1981-82	88,580	81,790	9,569	9,277	18,846	189,216
1982-83	88,066	83,361	9,252	9,321	18,573	190,000
1983-84	92,070	83,132	8,707	8,729	17,436	192,638
1984-85	86,699	77,324	8,896	8,651	17,547	181,570
1985-86	84,599	76,010	8,488	8,877	17,365	177,974
1986-87	82,895	76,542	9,066	8,058	17,124	176,561
1987-88	85,976	79,910	10,385	8,754	19,139	185,025
1988-89	90,299	83,480	9,983	8,996	18,979	192,758
1989-90	94,661	88,002	10,885	8,594	19,479	202,142
1990-91	99,568	91,892	10,459	9,398	19,857	211,317
1991-92	103,404	94,552	11,015	9,050	20,065	218,021
1992-93	103,961	94,896	10,754	9,066	19,820	218,677
1993-94	102,142	93,770	10,612	7,956	18,568	214,480
1994-95	100,735	90,168	10,643	7,679	18,322	209,225
1995-96	96,348	87,435	10,670	7,354	18,024	201,807
1996-97	95,812	87,263	10,580	8,140	18,720	201,795
1997-98	95,509	87,411	11,501	7,424	18,925	201,845
1998-99	97,569	89,264	11,857	7,751	19,608	206,441
1999-00	98,500	89,337	11,594	7,787	19,381	207,218
2000-01	99,775	91,630	12,662	8,573	21,235	212,640
2001-02	107,751	101,249	13,062	9,697	22,759	231,759
2002-03	116,126	105,788	14,112	9,607	23,719	245,633
2003-04	117,833	108,236	13,211	9,686	22,897	248,966
2004-05	120,114	110,120	12,583	9,315	21,898	252,132
2005-06	121,470	108,802	13,280	8,944	22,224	252,496
2006-07	122,818	112,117	13,061	8,716	21,777	256,712
2007-08	126,230	115,934	12,757	9,259	22,016	264,180
2008-09	130,040	122,405	13,210	10,512	23,722	276,167
2009-10	143,374	133,016	13,905	10,840	24,745	301,135
2010-11	150,235	134,820	13,448	10,116	23,564	308,619
2011-12	148,737	134,335	11,853	7,915	19,768	302,840
2012-13	139,611					

TABLE 21
FULL-TIME EQUIVALENT ENROLLMENT
FALL SEMESTERS, 1981 - 2012

<u>FALL</u>	UNDERGRADUATE		GRADUATE		TOTAL
	<u>HOURS</u>	<u>FTE</u>	<u>HOURS</u>	<u>FTE</u>	<u>FTE</u>
1981	83693	5,580	4,887	407	5,987
1982	83966	5,598	4,100	342	5,940
1983	88208	5,881	3,862	322	6,203
1984	83089	5,539	3,610	301	5,840
1985	80033	5,336	4,566	381	5,717
1986	78693	5,246	4,202	350	5,596
1987	81676	5,445	4,300	358	5,803
1988	85998	5,733	4,301	358	6,091
1989	90577	6,038	4,084	340	6,378
1990	95772	6,385	3,796	316	6,701
1991	99686	6,646	3,718	310	6,956
1992	100378	6,692	3,583	299	6,991
1993	98614	6,574	3,528	294	6,868
1994	97123	6,475	3,612	301	6,776
1995	92573	6,172	3,775	315	6,487
1996	92028	6,135	3,784	315	6,450
1997	91726	6,115	3,793	316	6,431
1998	93765	6,251	3,804	317	6,568
1999	94810	6,321	3,690	308	6,629
2000	96287	6,419	3,488	291	6,710
2001	103,689	6,913	4,062	339	7,252
2002	111,700	7,447	4,426	369	7,816
2003	113,999	7,600	3,834	320	7,920
2004	116,423	7,762	3,691	308	8,070
2005	117,332	7,822	4,138	345	8,167
2006	118,573	7,905	4,245	354	8,259
2007	121,824	8,122	4,406	367	8,489
2008	125,984	8,399	4,056	338	8,737
2009	138,594	9,240	4,780	398	9,638
2010	145,664	9,711	4,571	381	10,092
2011	144,507	9,634	4,230	353	9,987
2012	135,469	9,031	4,142	345	9,376

TABLE 22
CONTINUING EDUCATION ENROLLMENTS AND COURSES OFFERED
1986-2012

<u>YEAR</u>	<u>STUDENT ENROLLMENT</u>		<u>COURSES OFFERED</u>	
	<u>Non-credit</u>	<u>Credit</u>	<u>Non-credit</u>	<u>Credit</u>
1986-87	10,772	611	485	14
1987-88	9,207	855	527	31
1988-89	11,363	1,019	557	49
1989-90	12,033	3,661*	536	148*
1990-91	12,828	3,956*	585	171*
1991-92	11,352	4,381*	612	171*
1992-93	10,484	3,901*	522	158*
1993-94	9,587	1,546	503	90
1994-95	9,476	1,593	514	111
1995-96	9,496	2,005	510	124
1996-97	8,577	2,987	383	148
1997-98	8,940	2,699	465	178
1998-99	8,454	3,083	598	195
1999-00	8,002	3,124	602	241
2000-01	8,829	3,658	590	275
2001-02	8,022	5,773	614	371
2002-03	9,355	9,920	781	483
2003-04	7,121	11,263	695	541
2004-05	7,510	12,782	668	584
2005-06	7,747	14,746	691	668
2006-07	8,909	16,116	801	798
2007-08	11,176	16,897	885	839
2008-09	18,997	20,091	1,055	1,004
2009-10	20,221	23,552	1,145	1,188
2010-11	20,321	25,216	1,160	1,256
2011-12	20,068	26,136	1,112	1,320

*Weekend College credit enrollments and courses were included in the years 1989-93. 1999-00 through 2001-02 statistics updated by Continuing Education. Weekend College included beginning in 2002-03.

TABLE 23
CERTIFICATES AND DEGREES CONFERRED
SINCE JUNE, 1968

<u>Year Ending</u>	<u>Certificates*</u>	<u>Associate</u>	<u>Bachelor's</u>	<u>Master's</u>	<u>Total</u>
June, 1968	0	137	126	9	272
June, 1969	0	199	209	8	416
June, 1970	0	261	307	101	669
June, 1971	0	247	347	152	746
June, 1972	1	334	407	203	945
June, 1973	5	364	430	208	1,007
June, 1974	0	383	417	302	1,102
June, 1975	13	426	456	293	1,188
June, 1976	0	444	427	277	1,148
June, 1977	0	438	473	321	1,232
June, 1978	0	424	457	322	1,203
June, 1979	11	392	448	308	1,159
June, 1980	24	502	439	246	1,211
June, 1981	32	491	475	274	1,272
June, 1982	35	623	502	288	1,448
June, 1983	33	598	499	278	1,408
June, 1984	32	668	485	199	1,384
June, 1985	38	661	512	199	1,410
June, 1986	37	569	571	188	1,365
June, 1987	41	530	525	216	1,312
June, 1988	49	484	542	217	1,292
June, 1989	37	494	586	267	1,384
June, 1990	68	526	669	275	1,538
June, 1991	69	574	679	145	1,467
June, 1992	84	559	717	147	1,507
June, 1993	79	557	704	162	1,502
June, 1994	113	530	747	170	1,560
June, 1995	96	508	755	146	1,505
June, 1996	88	473	802	181	1,544
June, 1997	86	470	687	189	1,432
June, 1998	84	470	766	187	1,507
June, 1999	82	444	765	200	1,491
June, 2000	91	444	782	205	1,522
June, 2001	75	435	713	173	1,396
June, 2002	58	490	831	181	1,560
June, 2003	70	525	854	213	1,662
June, 2004	81	566	869	201	1,717
June, 2005	83	572	907	163	1,725
June, 2006	113	522	1,025	213	1,873
June, 2007	88	479	995	187	1,749
June, 2008	68	457	999	215	1,739
June, 2009	73	466	1,009	207	1,755
June, 2010	85	452	1,157	225	1,919
June, 2011	91	377	1,144	243	1,855
June, 2012	<u>82</u>	<u>330</u>	<u>1,293</u>	<u>257</u>	<u>1,962</u>
TOTAL	2,295	20,895	29,509	9,361	62,060

* Certificates were awarded prior to 1980, but accurate counts are not available.

TABLE 24
RESIDENCE OF ALUMNI* As of November, 2012

<u>Location</u>	<u>Total</u>	<u>Location</u>	<u>Total</u>
INDIANA	38,273	Montana	33
Alabama	116	Nebraska	47
Alaska	19	Nevada	84
Arizona	482	New Hampshire	33
Arkansas	61	New Jersey	68
California	646	New Mexico	75
Colorado	323	New York	159
Connecticut	77	North Carolina	466
Delaware	12	North Dakota	11
District of Columbia	16	Ohio	1,619
Florida	1,353	Oklahoma	64
Georgia	378	Oregon	109
Hawaii	27	Pennsylvania	194
Idaho	23	Rhode Island	16
Illinois	833	South Carolina	229
Iowa	69	South Dakota	13
Kansas	71	Tennessee	358
Kentucky	254	Texas	758
Louisiana	43	Utah	39
Maine	22	Vermont	19
Maryland	105	Virginia	274
Massachusetts	137	Washington	153
Michigan	972	West Virginia	26
Minnesota	135	Wisconsin	214
Mississippi	32	Wyoming	13
Missouri	233	Overseas Military	12
		U.S. SUBTOTAL	49,798
		Foreign Nations/U.S. Territories	<u>85</u>
		TOTAL	49,883

* Includes only those living alumni for whom valid addresses are known.

PART III
FACULTY AND STAFF

TABLE 25
INSTITUTIONAL STAFF DATA COMPARISON
FALL SEMESTERS, 2008 - 2012

	<u>2008</u>	<u>2009</u>	<u>2010</u>	<u>2011</u>	<u>2012</u>
FACULTY					
A. Regularly Appointed Teaching Faculty by Rank					
Professor	75	82	82	80	84
Associate Professor	117	124	127	133	138
Assistant Professor	135	133	135	125	112
Instructor	19	20	24	28	30
Lecturer	<u>47</u>	<u>48</u>	<u>58</u>	<u>64</u>	<u>64</u>
TOTAL	393	407	426	430	428
B. Associate Faculty	378	405	401	450	432
Graduate Assistants/Aides	85	106	113	109	94
ADMINISTRATIVE	313	325	327	344	329
CLERICAL	199	203	200	202	192
SERVICE	<u>199</u>	<u>230</u>	<u>235</u>	<u>230</u>	<u>242</u>
TOTAL	1,567	1,676	1,702	1,765	1,717

Notes:

Faculty Counts

1. Include librarians who hold faculty rank
2. Exclude administrators who hold faculty rank and have administrative FTE greater than .50 in a school or administrative office
3. Exclude open positions approved for recruitment
4. Include faculty on leave and visiting faculty
5. Exclude undergraduate assistants, temporary part-time staff, adjunct and affiliate faculty, and visiting scholars
6. Exclude Medical Education

Administrative Counts

8. Include faculty who have greater than .50 FTE administrative responsibilities in a school or administrative office
9. Include positions less than .50 FTE
10. Include positions funded by external sources
11. Exclude vacant positions
12. Include Medical Education

Clerical/Service Counts

13. Include positions funded by external sources
14. Exclude vacant positions
15. Include Medical Education
16. Include temporary staff

TABLE 26
REGULAR MINORITY EMPLOYEES
FALL SEMESTER, 2012

<u>Category</u>	<u>Total Regular Employees</u>	<u>Total Minority Employees</u>	<u>Percent Minority</u>
Faculty	428	64	15.0%
Administration	329	36	10.9%
Clerical	192	19	9.9%
Service	<u>242</u>	<u>34</u>	<u>14.1%</u>
TOTAL	1191	153	12.8%

TABLE 27
MINORITY EMPLOYEES BY ETHNIC CATEGORY
FALL SEMESTER, 2012

	American Indian/Alaskan Native			Asian or Pacific Islander			Black			Hispanic			Multiracial			Total		
	<u>M</u>	<u>F</u>	<u>TOT</u>	<u>M</u>	<u>F</u>	<u>TOT</u>	<u>M</u>	<u>F</u>	<u>TOT</u>	<u>M</u>	<u>F</u>	<u>TOT</u>	<u>M</u>	<u>F</u>	<u>TOT</u>	<u>M</u>	<u>F</u>	<u>TOT</u>
Faculty	3	1	4	21	18	39	8	3	11	3	5	8	2	0	2	37	27	64
Admin.	1	0	1	7	1	8	12	6	18	1	8	9	0	0	0	21	15	36
Clerical	0	4	4	1	1	2	0	12	12	0	1	1	0	0	0	1	18	19
Service	<u>3</u>	<u>3</u>	<u>6</u>	<u>4</u>	<u>1</u>	<u>5</u>	<u>11</u>	<u>1</u>	<u>12</u>	<u>6</u>	<u>5</u>	<u>11</u>	<u>0</u>	<u>0</u>	<u>0</u>	<u>24</u>	<u>10</u>	<u>34</u>
TOTAL	7	8	15	33	21	54	31	22	53	10	19	29	2	0	2	83	70	153

TABLE 28
REGULAR EMPLOYEES BY GENDER
FALL SEMESTER, 2012

<u>Category</u>	<u>Male</u>	<u>Female</u>	<u>Total</u>	<u>% Female</u>
Professor	63	21	84	25.0%
Associate Professor	85	53	138	38.4%
Assistant Professor	49	63	112	56.3%
Instructor & Lecturer	<u>44</u>	<u>50</u>	<u>94</u>	<u>53.2%</u>
FACULTY	241	187	428	43.7%
ADMINISTRATION	150	179	329	54.4%
CLERICAL	14	178	192	92.7%
SERVICE	<u>159</u>	<u>83</u>	<u>242</u>	<u>34.3%</u>
TOTAL	564	627	1191	52.6%

TABLE 29
FULL-TIME FACULTY SALARIES BY RANK
2008 - 2012

Category	Average <u>2008-09</u>	Average <u>2009-10</u>	Average <u>2010-11</u>	Average <u>2011-12</u>	Average <u>2012-13</u>
Professor	\$77,969	\$79,167	\$80,526	\$84,741	\$86,393
Associate Professor	\$62,519	\$62,191	\$63,017	\$68,026	\$69,086
Assistant Professor	\$56,808	\$56,218	\$56,782	\$61,955	\$63,001
Instructor	\$41,320	\$41,598	\$48,718	\$48,857	\$51,437
Lecturer	\$42,214	\$41,565	\$42,626	\$45,472	\$45,638

Salaries do not include fringe benefits. Averages do not include deans, librarians, or administrative staff with faculty rank. Full-time faculty is defined as any faculty holding one of the above ranks with 0.5 or greater FTE. All positions equated to 1.0 FTE for salary computation. All salaries are stated as 10-month salaries. Adjustments have been made to reflect computation differences in converting IU or Purdue salaries from 12 to 10-month basis.

TABLE 30
SABBATICAL LEAVES BY DEPARTMENT/DIVISION
by Academic Year, 2008-2012

Year of Leave	<u>Department/Division</u>	<u>Fall</u>	<u>Spring</u>
2008-09	Accounting & Finance	0	1
	Biology	0	2
	Communication	0	1
	Engineering	2	0
	English & Linguistics	0	1
	Library	1	0
	Management & Marketing	1	2
	Mathematical Sciences	1	0
	Organizational Leadership & Supervision	1	0
	Philosophy	1	1
	Physics	1	0
	Political Science	2	1
	Psychology	1	1
	Sociology	<u>0</u>	<u>1</u>
	TOTAL	11	11
	2009-10	Biology	1
Communication		1	0
Consumer & Family Sciences		1	0
English & Linguistics		1	2
Fine Arts		1	0
Mathematical Sciences		4	3
Organizational Leadership & Supervision		2	1
Philosophy		1	0
Political Science		1	1
Public & Environmental Affairs		1	0
Psychology		<u>1</u>	<u>0</u>
TOTAL		15	7
2010-11	Biology	1	1
	Comp & Elect Engr Tech & Information Systems & Tech	0	2
	Engineering	0	1
	Geosciences	1	0
	History	0	1
	Management & Marketing	1	0
	Mathematical Sciences	2	0
	Music	0	1
	Organizational Leadership & Supervision	0	1
	Philosophy	0	1
	Physics	1	0
	Professional Studies	0	1
	Psychology	1	1
	Sociology	0	1

TABLE 30
SABBATICAL LEAVES BY DEPARTMENT/DIVISION
by Academic Year, 2008-2012

<u>Year of Leave</u>	<u>Department/Division</u>	<u>Fall</u>	<u>Spring</u>
2010-11 Continued...	Theatre	<u>0</u>	<u>1</u>
	TOTAL	7	12
2011-12	Accounting & Finance	0	1
	Biology	0	1
	Comp & Elect Engr Tech & Information Systems & Tech	0	1
	Computer Science	1	0
	Engineering	1	3
	English & Linguistics	2	1
	History	0	1
	International Language & Culture Studies	1	0
	Mathematical Sciences	1	0
	Manufacturing & Construction Engr Tech & Int Design	1	2
	Philosophy	0	1
	Psychology	1	1
	Public Policy	0	1
	Sociology	<u>3</u>	<u>1</u>
	TOTAL	11	14
2012-13	Accounting & Finance	0	1
	Anthropology	1	1
	Chemistry	1	2
	Computer Science	1	0
	Economics	1	0
	Educational Studies	1	0
	English & Linguistics	0	1
	Engineering	2	1
	Fine Arts	1	0
	History	1	1
	International Language & Culture Studies	1	1
	Mathematical Sciences	0	1
	Organizational Leadership & Supervision	1	0
	Philosophy	1	0
	Psychology	<u>2</u>	<u>1</u>
TOTAL	14	10	

TABLE 31
TENURED FACULTY* BY DEPARTMENT/DIVISION
FALL SEMESTER, 2012

	Number of Faculty*	Number Tenured	Percent Tenured
ARTS AND SCIENCES			
Anthropology	6	2	33%
Biology	19	11	58%
Chemistry	12	8	67%
Communication	14	3	21%
Communication Sciences & Disorders	3	1	33%
English and Linguistics	30	15	50%
Geosciences	6	3	50%
Gerontology	1	0	0%
History	9	4	44%
International Language & Culture Studies	16	5	31%
Mathematical Sciences	27	21	78%
Philosophy	12	6	50%
Physics	7	5	71%
Political Science	8	6	75%
Psychology	18	13	72%
Sociology	9	6	67%
Women's Studies	<u>1</u>	<u>1</u>	<u>100%</u>
TOTAL	198	110	56%
BUSINESS			
Accounting and Finance	12	6	50%
Economics	6	4	67%
Management and Marketing	<u>12</u>	<u>6</u>	<u>50%</u>
TOTAL	30	16	53%
EDUCATION AND PUBLIC POLICY			
Educational Studies	14	9	64%
Professional Studies	8	3	38%
Public Policy	<u>9</u>	<u>4</u>	<u>44%</u>
TOTAL	31	16	52%
ENGINEERING, TECHNOLOGY, AND COMPUTER SCIENCE			
Computer Science	14	7	50%
Computer, Electrical, & Information Technology	8	5	63%
Engineering	20	18	90%
Manufacturing & Construction Engineering Tech & Interior Design	11	7	64%
Military Science	4	0	0%
Organizational Leadership & Supervision	<u>10</u>	<u>4</u>	<u>40%</u>
TOTAL	67	41	61%
HEALTH AND HUMAN SERVICES			
Consumer and Family Sciences	5	3	60%
Dental Education	10	2	20%
Human Services	4	1	25%
Nursing	22	4	18%
Radiography	<u>5</u>	<u>0</u>	<u>0%</u>
TOTAL	46	10	22%

Table 31 continued on next page

TABLE 31
TENURED FACULTY* BY DEPARTMENT/DIVISION, continued
FALL SEMESTER, 2012

	Number of Faculty*	Number Tenured	Percent Tenured
LABOR STUDIES			
Labor Studies	1	1	100%
LIBRARY			
Library	10	4	40%
VISUAL AND PERFORMING ARTS			
Fine Arts	7	5	71%
Music	22	8	36%
Theatre	6	2	33%
Visual Communication & Design	<u>10</u>	<u>2</u>	<u>20%</u>
TOTAL	45	17	38%
TOTAL CAMPUS	428	215	50%

* Excludes members of the administrative staff who hold faculty rank.

TABLE 32
TENURED FACULTY* BY RANK AND SEX
FALL SEMESTER, 2012

		<u>Professor</u>	<u>Associate</u>	<u>Assistant</u>	<u>Instructor/ Lecturer</u>	<u>TOTAL</u>
MALE	TENURED	63	80	1	1	145
	NONTENURED	<u>0</u>	<u>5</u>	<u>48</u>	<u>43</u>	<u>96</u>
	TOTAL	63	85	49	44	241
	% of Males Tenured	100%	94%	2%	2%	60%
FEMALE	TENURED	21	45	2	2	70
	NONTENURED	<u>0</u>	<u>8</u>	<u>61</u>	<u>48</u>	<u>117</u>
	TOTAL	21	53	63	50	187
	% of Females Tenured	100%	85%	3%	4%	37%

* Excludes members of the administrative staff who hold faculty rank.

PART IV
SOURCES OF SUPPORT

TABLE 33
GENERAL FUNDS OPERATING BUDGET INCOME ESTIMATES
2008-09 through 2012-13

<u>Category</u>	<u>2008-09</u>	<u>2009-10</u>	<u>2010-11</u>	<u>2011-12</u>	<u>2012-13</u>
Student Fee Income	50,176,032	54,606,817	61,641,277	64,886,333	64,836,333
Facilities & Administrative Recovery	80,000	150,000	150,000	175,000	175,000
Interest Income	900,000	1,000,000	1,000,000	1,600,000	1,700,000
Other Income	<u>572,912</u>	<u>1,327,682</u>	<u>1,327,682</u>	<u>1,626,764</u>	<u>1,672,411</u>
TOTAL	\$51,728,944	\$57,084,499	\$64,118,959	\$68,288,097	\$68,383,744
STATE APPROPRIATIONS					
General Operating	\$38,449,705	\$37,378,801	\$37,816,896	\$38,563,050	\$38,563,050
General Oper. - Non-Rec.		\$1,070,904			
Fee Replacement	<u>5,352,031</u>	<u>5,995,241</u>	<u>5,980,642</u>	<u>5,412,164</u>	<u>5,420,037</u>
TOTAL	\$43,801,736	\$44,444,946	\$43,797,538	\$43,975,214	\$43,983,087
TOTAL FUNDS AVAILABLE	\$95,530,680	\$101,529,445	\$107,916,497	\$112,263,311	\$112,366,831

TABLE 34
STATE APPROPRIATION* AS A PERCENT
OF BUDGETED GENERAL UNRESTRICTED FUNDS**
1975-76 through 2012-13

	<u>Total Income</u> <u>Budget</u>	<u>Budgeted State</u> <u>Appropriation</u>	<u>Percent of</u> <u>Total</u>	<u>Percent Change In</u> <u>State Appropriation</u>
1975-76***	\$10,633,598	\$7,780,210	73.2%	n.a.
1976-77	11,690,723	8,473,751	72.5%	8.9%
1977-78	12,585,626	8,768,897	69.7%	3.5%
1978-79	13,539,842	9,607,584	71.0%	9.6%
1979-80	14,213,160	10,779,305	75.8%	12.2%
1980-81	15,829,120	11,962,379	75.6%	11.0%
1981-82	18,411,187	13,463,390	73.1%	12.5%
1982-83	19,379,995	13,370,377	69.0%	- 0.7%
1983-84	20,881,207	14,275,459	68.4%	6.8%
1984-85	22,479,239	15,079,473	67.1%	5.6%
1985-86	24,284,306	16,853,082	69.4%	11.8%
1986-87	28,436,119	18,408,554	64.7%	9.2%
1987-88	29,644,275	18,864,730	63.6%	2.5%
1988-89	32,755,275	21,003,637	64.1%	11.3%
1989-90	35,278,893	22,412,220	63.5%	6.7%
1990-91	38,208,192	23,891,417	62.5%	6.6%
1991-92	42,431,873	26,520,748	62.5%	11.0%
1992-93	43,651,789	26,013,589	59.6%	- 1.9%
1993-94	45,345,131	26,888,666	59.3%	3.4%
1994-95	46,263,898	26,807,798	57.9%	- 0.3%
1995-96	47,966,014	27,551,784	57.4%	2.8%
1996-97	49,120,991	28,378,696	57.8%	3.0%
1997-98	51,982,158	30,205,479	58.1%	6.4%
1998-99	53,224,315	30,760,175	57.8%	1.8%
1999-2000	56,680,056	32,112,054	56.7%	4.4%
2000-01	59,419,950	33,665,568	56.7%	4.8%
2001-02	62,684,188	34,308,150	54.7%	1.9%
2002-03	67,526,791	34,530,384	51.1%	0.6%
2003-04	72,900,789	36,067,055	49.5%	4.5%
2004-05	77,359,427	37,483,968	48.5%	3.9%
2005-06	81,177,694	38,295,900	47.2%	2.2%
2006-07	84,387,437	39,283,957	46.6%	2.6%
2007-08	89,675,816	41,340,282	46.1%	5.2%
2008-09	95,530,680	43,801,736	45.9%	6.0%
2009-10	101,529,445	44,444,946	43.8%	1.5%
2010-11	107,916,497	43,797,538	40.6%	-1.5%
2011-12	112,263,311	43,975,214	39.2%	0.4%
2012-13	112,366,831	43,983,087	39.1%	0.0%

* Includes Fee Replacement Appropriation

** Using budget data

*** First year of combined Indiana and Purdue operations

TABLE 35
STUDENT FINANCIAL AID BY TYPE OF AID
1976-77 through 2011-12

	<u>Scholarships and Grants</u>	<u>Loans</u>	<u>All Employment</u>	<u>TOTAL</u>
1976-77	978,679	320,589	159,673	1,458,941
1977-78	925,198	393,836	123,973	1,443,007
1978-79	917,814	487,134	152,805	1,557,753
1979-80	1,464,768	746,284	165,545	2,376,597
1980-81	1,625,858	1,302,951	513,673	3,442,482
1981-82	1,747,630	1,961,328	433,227	4,142,185
1982-83	2,113,758	2,293,424	619,854	5,027,036
1983-84	2,457,014	2,708,963	1,117,775	6,283,752
1984-85	2,520,201	2,672,332	941,048	6,133,581
1985-86	2,550,234	2,630,427	1,175,405	6,356,066
1986-87	2,461,548	2,222,278	1,057,820	5,741,646
1987-88	2,816,082	2,503,969	924,177	6,244,228
1988-89	3,271,178	3,444,215	1,218,931	7,934,324
1989-90	4,128,093	3,072,032	828,023	8,028,148
1990-91	4,151,073	4,010,242	787,022	8,948,337
1991-92	5,189,303	4,504,399	166,775	*9,860,477
1992-93	6,237,330	4,643,142	158,295	11,038,767
1993-94	5,231,889	7,639,649	144,040	13,015,578
1994-95	5,377,367	9,606,031	131,618	15,115,016
1995-96	5,595,853	12,327,329	136,831	18,060,013
1996-97	6,403,831	13,569,997	141,970	**20,115,798
1997-98	6,788,954	13,183,114	120,464	20,092,532
1998-99	7,436,817	13,076,024	199,001	20,711,842
1999-2000	8,388,999	13,626,749	203,438	22,219,186
2000-01	9,178,934	15,379,866	181,848	24,740,648
2001-02	12,784,601	18,763,313	***1,647,740	***33,195,654
2002-03	14,773,872	22,745,691	2,161,684	39,681,247
2003-04	17,420,382	28,239,317	2,432,846	48,092,545
2004-05	****19,440,249	****32,236,129	****2,743,831	****54,420,209
2005-06	20,233,098	34,237,381	****2,921,729	****57,392,208
2006-07	23,477,317	37,766,366	3,109,062	64,352,745
2007-08	26,179,354	43,274,966	3,027,924	72,482,244
2008-09	27,913,628	53,987,666	3,452,159	85,353,453
2009-10	41,194,013	60,611,379	4,179,138	105,984,530
2010-11	42,625,692	65,070,710	5,094,759	112,791,161
2011-12	41,184,405	63,663,887	4,765,285	114,057,851

* Beginning with 1991-92 excludes off-campus employment not administered by the Financial Aid office

** Beginning with 1996-97 includes external billings not previously reported.

*** 2001-02 restated to reflect new format required by the Board of Trustees; all on-campus student employment included

**** 2004-05 and 2005-06 data revised.

TABLE 36
STUDENT FEES PER CREDIT HOUR
1979-80 through 2012-13

	Undergraduate <u>Resident</u>	Undergraduate <u>Non-Resident</u>	Graduate <u>Resident</u>	Graduate <u>Non-Resident</u>
1979-80	\$26.25	\$58.50	\$34.25	\$69.00
1980-81	\$28.25	\$63.50	\$37.00	\$75.00
1981-82	\$32.45	\$76.15	\$42.45	\$89.95
1982-83	\$37.30	\$91.50	\$48.80	\$108.00
1983-84	\$39.65	\$98.60	\$52.00	\$116.90
1984-85	\$42.45	\$105.50	\$55.65	\$125.00
1985-86	\$45.00	\$111.75	\$59.00	\$132.50
1986-87	\$47.75	\$118.50	\$62.50	\$140.50
1987-88	\$50.25	\$124.50	\$66.00	\$147.50
1988-89	\$53.00	\$131.25	\$69.50	\$155.50
1989-90	\$56.20	\$139.15	\$73.65	\$164.85
1990-91	\$59.55	\$147.50	\$78.05	\$174.75
1991-92	\$64.30	\$159.30	\$84.30	\$188.75
1992-93	\$69.45	\$172.05	\$91.05	\$203.85
1993-94	\$74.30	\$184.10	\$97.40	\$218.10
1994-95	\$80.25	\$198.85	\$105.20	\$235.55
1995-96	\$84.25	\$208.80	\$110.45	\$247.35
1996-97*	\$93.85	\$224.65	\$121.00	\$264.75
1997-98	\$97.60	\$235.85	\$125.85	\$277.95
1998-99	\$101.50	\$247.65	\$130.90	\$291.85
1999-00	\$106.30	\$260.50	\$137.30	\$307.10
2000-01**	\$114.85	\$277.85	\$147.10	\$326.60
2001-02	\$123.35	\$298.70	\$158.05	\$351.30
2002-03 New ***	\$152.70	\$345.55	\$190.85	\$403.45
2002-03 Continuing	\$135.70	\$328.55	\$173.85	\$386.45
2003-04 New	\$170.25	\$385.20	\$210.35	\$448.00
2003-04 Continuing	\$152.40	\$366.75	\$192.50	\$429.55
2004-05 New	\$177.05	\$408.30	\$218.75	\$474.90
2004-05 Continuing	\$158.50	\$388.75	\$200.20	\$455.30
2005-06 New	\$187.65	\$432.80	\$231.90	\$503.40
2005-06 Continuing	\$168.00	\$412.10	\$212.20	\$482.60
2006-07 New	\$201.35	\$461.20	\$248.25	\$536.05
2006-07 Continuing	\$198.90	\$458.75	\$245.80	\$533.60
2007-08 New	\$210.40	\$488.85	\$259.40	\$568.20
2007-08 Continuing	\$207.85	\$486.30	\$256.85	\$565.65
2008-09 New	\$219.85	\$518.15	\$271.05	\$602.25
2008-09 Continuing	\$217.20	\$515.50	\$268.40	\$599.60
2009-10 New	\$230.85	\$549.25	\$284.60	\$638.40
2009-10 Continuing	\$228.05	\$546.45	\$281.80	\$635.60
2010-11 New	\$242.40	\$582.20	\$298.85	\$676.70
2010-11 Continuing	\$239.45	\$579.25	\$295.90	\$673.75
2011-12****	\$248.45	\$596.75	\$306.30	\$693.60
2012-13	\$254.65	\$611.65	\$313.95	\$710.95

* Laboratory and special fees included in basic fee beginning this year.

** Technology fee assessed separately from 1996-97 to 2000-01, then included in basic fees. Student Service and parking fees assessed separately.

*** Two-tier fee schedule beginning 2002-03.

****Two-tier fee schedule discontinued in 2011-12.

TABLE 37
SOURCES AND MAJOR DISTRIBUTION OF BUDGETED FUNDS
2007-08 through 2012-13

<u>Sources of Funds</u>	<u>2008-09</u>	<u>2009-10</u>	<u>2010-11</u>	<u>2011-12</u>	<u>2012-13</u>
State Appropriations	45.9%	43.2%	40.6%	39.2%	39.1%
Student Fees	52.5%	54.4%	57.1%	57.8%	57.7%
Other	<u>1.6%</u>	<u>2.4%</u>	<u>2.3%</u>	<u>3.0%</u>	<u>3.2%</u>
TOTAL	100.0%	100.0%	100.0%	100.0%	100.0%
<u>Major Distribution Areas</u>					
Instruction/Dept. Research	35.9%	34.1%	32.4%	34.0%	33.7%
Physical Plant	11.3%	12.1%	11.6%	12.3%	12.8%
Staff Welfare	19.9%	19.9%	20.8%	20.3%	21.4%
Support Areas	17.5%	17.0%	18.6%	17.2%	15.7%
Student Services	4.8%	5.6%	5.4%	5.5%	5.5%
Central Services	1.1%	1.2%	1.3%	1.3%	1.5%
Fee Remissions	4.0%	4.2%	4.4%	4.6%	4.6%
Debt Service	<u>5.6%</u>	<u>6.0%</u>	<u>5.5%</u>	<u>4.8%</u>	<u>4.8%</u>
TOTAL	100.1%	100.1%	100.0%	100.0%	100.0%

TABLE 38
GRANTS AND CONTRACTS BY FUNDING SOURCE
2007-08 through 2011-12

	<u>2007-08</u>	<u>2008-09</u>	<u>2009-10</u>	<u>2010-11</u>	<u>2011-12</u>
Private & Area Organizations	\$1,111,521	\$736,522	\$806,406	\$1,255,657	\$770,367
Federal Agencies	1,685,018	1,944,857	2,974,585	3,021,793	2,855,694
State Agencies	1,571,858	886,936	758,673	1,105,175	1,139,764
University Support and Other	<u>955,697</u>	<u>1,059,515</u>	<u>1,885,659</u>	<u>1,190,600</u>	<u>1,466,146</u>
TOTAL	\$5,324,094	\$4,627,830	\$6,425,323	\$6,573,225	\$6,231,971

TABLE 39
SOURCES OF GIFTS TO IPFW
2007-08 through 2011-12

Source of Funds	<u>2007-08</u>	<u>2008-09</u>	<u>2009-10</u>	<u>2010-11</u>	<u>2011-12</u>
IPFW Graduates	\$200,753	\$175,512	\$225,271	\$176,332	\$528,471
Corporations	1,101,921	1,047,944	4,066,063	3,365,903	1,370,845
Corporate Matching Gifts	26,748	34,159	29,008	27,985	25,834
Community Organizations and Foundations	865,462	2,192,314	2,640,629	1,666,908	2,091,246
Community (Friends)	<u>1,487,487</u>	<u>1,426,973</u>	<u>1,386,506</u>	<u>1,508,121</u>	<u>875,660</u>
TOTAL	\$3,682,371	\$4,876,902	\$8,347,477	\$6,745,249	\$4,892,056

Note: 2007-08, and 2009-10 data revised.

TABLE 40
SUMMARY OF GIFTS TO IPFW
1986-87 through 2011-12

<u>Year</u>	<u>Total Amount</u>	<u>Year</u>	<u>Total Amount</u>
1985-86	\$326,748	1998-99	\$1,539,041
1986-87	\$409,462	1999-00	\$1,731,624
1987-88	\$491,034	2000-01	\$2,113,185
1988-89	\$1,376,754	2001-02	\$1,823,931
1989-90	\$783,577	2002-03	\$2,410,924
1990-91	\$2,137,795	2003-04	\$7,027,356
1991-92	\$3,169,993	2004-05	\$3,389,411
1992-93	\$1,001,186	2005-06	\$8,295,478
1993-94	\$1,141,748	2006-07	\$6,255,795
1994-95	\$1,008,213	2007-08	\$3,682,371
1995-96	\$2,823,270	2008-09	\$4,876,902
1996-97	\$1,300,781	2009-10	\$8,347,477
1997-98	\$2,449,810	2010-11	\$6,745,249
		2011-12	\$4,892,056

Note: 2001-02, 2004-05, 2006-07, 2007-08, and 2009-10 data revised.

PART V
FACILITIES

TABLE 41
HELMKE LIBRARY HOLDINGS
1972 through 2012

	<u>Volumes**</u>	<u>Government Publications***</u>	<u>Microfilm Reels</u>	<u>Other Microforms****</u>	<u>TOTAL*****</u>
1972	120,069		1,293	6,064	127,426
1973	136,426		1,573	6,137	144,136
1974	147,160		1,844	8,256	157,260
1975	161,490		2,769	8,398	172,657
1976	156,516		4,275	7,589	168,380
1977*	175,789	26,079	4,330	9,680	215,878
1978	182,132	33,969	5,815	30,112	252,028
1979	198,391	42,052	6,060	43,530	290,033
1980	217,270	50,858	6,849	53,545	328,522
1981	228,151	58,904	7,477	86,995	381,527
1982	234,431	63,055	8,352	107,542	413,380
1983	235,617	67,712	8,895	123,103	435,327
1984	240,874	72,980	9,039	150,805	473,698
1985	246,885	75,070	9,635	172,419	504,009
1986	252,887	78,911	10,595	194,440	536,833
1987	259,309	82,632	10,830	211,313	564,084
1988	265,611	87,041	11,033	231,021	594,706
1989	273,941	91,416	11,156	245,173	621,686
1990	277,545	94,522	11,253	273,435	656,755
1991	281,344	96,823	11,359	321,561	711,087
1992	284,904	102,431	11,477	359,040	757,852
1993	290,562	106,677	11,575	395,762	804,576
1994	295,115	110,697	11,672	416,898	834,382
1995	299,235	113,974	11,777	444,128	869,114
1996	305,090	116,721	11,823	469,714	903,348
1997	311,070	119,638	11,879	489,819	932,406
1998	316,528	121,587	12,101	502,167	952,383
1999	314,929	116,936	12,648	510,827	955,340
2000	333,323	118,646	13,049	521,048	986,066
2001	338,113	120,586	13,203	520,916	992,818
2002	346,015	133,977	13,367	523,152	1,016,511
2003	346,295	114,693	13,455	524,714	999,157
2004	352,023	122,928	13,551	528,541	1,017,043
2005	359,036	115,766	13,654	528,372	1,016,828
2006	363,536	114,555	13,631	531,097	1,022,819
2007	356,536	114,864	13,689	532,104	1,017,193
2008	343,731	111,289	13,744	535,538	1,004,302
2009	335,017	106,630	13,583	521,634	976,864
2010	327,181	106,463	13,578	522,213	969,435
2011	311,094	106,114	13,469	524,309	954,986
2012	263,285	105,816	12,462	524,786	906,349

* In accord with ACRL standards, bound serial volumes counted in volume count.

** Does not include government documents; net of retirement of obsolete materials.

*** Does not include microforms or maps.

**** Includes government documents.

***** Total does not include computer disks, videotapes, art slides, cd rom's and other media.

**TABLE 42
CAPITAL HOLDINGS**

	<u>Date Acquired/ Constructed</u>	<u>Gross Square Feet</u>	<u>Original Cost</u>
Campus Structures - Main Campus Area			
Child Care Center (Hobson Road) (closed)	1956	5,135	***\$20,000
Alfred W. Kettler Hall	1963	232,002	\$5,600,000
Support Services Building (formerly Physical Plant Bldg.)	1963	9,411	*
Extension Service Building	1963	5,525	*
Greenhouse	1964	709	***\$1,500
Walter E. Helmke Library	1970	116,535	\$4,200,000
Floyd R. Neff Hall	1970	111,890	\$4,415,000
Chiller Plant	1970	8,541	\$742,000
Walter W. Walb Student Union	1971	92,231	\$4,000,000
Equipment Material & Storage Building	1978	581	\$295,000
Fleet Auto Storage Building	1978	2,188	**
Liberal Arts Building (formerly Classroom-Medical Building)	1981	94,508	\$5,990,000
Hilliard Gates Sports Center	1981	76,167	\$4,117,000
Life Sciences Resource Center	1986	9,543	\$1,200,000
Printing Services/Warehouse	1990	13,368	\$1,089,500
Visual Arts Building (formerly Fine Arts Bldg.)	1991	62,265	\$4,870,000
Parking Garage #1	1991	235,294	\$4,500,000
Ernest E. Williams Theatre	1992	51,631	\$4,650,000
Engineering, Technology, and Computer Science Building	1992	78,933	\$10,500,000
Science Building	1997	130,696	\$20,700,000
Parking Garage #2	1997	286,231	\$7,200,000
Fleet Wash Bay	1999	501	\$50,000
Sand Salt Storage	1999	2,095	\$45,000
Press Box	2002	856	\$48,000
Willis Family Bridge	2003	3,581	\$2,300,000
Hobson Center	2004	2,856	\$375,000
Rhinehart Music Center	2007	103,301	\$28,000,000
Venderly Family Bridge	2009	5,500	\$4,300,000
Parking Garage #3	2011	358,393	\$16,800,000
Student Services Complex	2011	176,311	\$42,400,000

Table 42 continued on next page

**TABLE 42
CAPITAL HOLDINGS**

	<u>Date Acquired/ Constructed</u>	<u>Gross Square Feet</u>	<u>Original Cost</u>
Campus Structures - West Campus Area			
West Campus Storage	1895	6,000	Unknown
Soccer Support Facility	2002	5,870	\$740,000
Steel Dynamics Keith E. Busse Alumni Center	2011	8,007	\$1,581,482
Campus Structures - Northeast Campus Area			
Ginsberg Center (in honor of S. T. Ginsberg, former Commissioner of Mental Health)	1965	96,339	Unknown
Biggs Hall (in honor of Byron Biggs, former Superintendent)	1965	11,308	Unknown
Craig Hall (in honor of George N. Craig, former Governor)	1965	11,348	Unknown
McGonagle Hall (in honor of Charles S. McGonagle, former Superintendent)	1965	11,350	Unknown
Dunham Hall (in honor of W. F. Dunham, former Superintendent)	1965	11,510	Unknown
Handley Hall (in honor of Harold W. Handley, former Governor)	1965	20,602	Unknown
Gates Hall (closed) (in honor of Ralph F. Gates, former Governor)	1965	11,454	Unknown
Dolnick Center (in honor of Bernard Dolnick, former Superintendent)	1965	20,055	Unknown
Campus Structures - Student Housing			
Building A	2004	26,457	\$3.5 M
Building B	2004	26,457	\$3.5 M
Building C	2004	26,384	\$3.5 M
Building D	2004	26,638	\$3.5 M
Building E	2004	26,509	\$3.5 M
Building F	2004	26,598	\$3.5 M
Building G	2004	26,509	\$3.5 M
Building H	2007	35,337	Ph. II - \$5.75 M
Building I	2007	26,453	Ph. II - \$4.75 M
WHCM M - Cole Commons	2004	5,233	\$750,000

Table 42 continued on next page

**TABLE 42
CAPITAL HOLDINGS**

	<u>Date Acquired/ Constructed</u>	<u>Gross Square Feet</u>	<u>Original Cost</u>
Campus Structures - Student Housing continued			
Building J	2010	49,155	Ph. III - \$3.6 M
Building K	2010	49,155	Ph. III - \$3.6 M
Building L	2010	49,155	Ph. III - \$3.6 M
Building M	2010	49,155	Ph. III - \$3.6 M
Clubhouse	2010	13,130	\$1,833,000
Maintenance Building	2010	2,160	\$280,000
Off Campus Structures			
Child Care Facility (Reed Road)	1988	11,243	\$515,000
Crooked Lake Biological Station	1975	6,261	Unknown

* Included in cost of Alfred W. Kettler Hall

** Included in cost of Equipment Material & Storage Building

*** Estimate of original cost. Exact cost unknown.

Acreage

<u>Land Area</u>	<u>Acreage</u>
Main Campus	661.92
Crooked Lake	20.57
Child Care (Reed Road)	<u>0.86</u>
	683.35