



BUSINESS AND INNOVATION

From Student to Educator, Boylan Brings Perspective from Different Eras

When accepting a Greater Fort Wayne Inc. Women's Network **Champions of Change Award** in May, Daniel Boylan, assistant professor of accounting at the Doermer School of Business, took some time during a group Q&A with the other honorees to help those attending the ceremony better understand one way Purdue University Fort Wayne has changed in recent years.

Discussing the kind of things he does to provide inspiration in the classroom, Boylan mentioned the positive impact international students have had on the PFW campus—and more specifically—on students from this region.

"To me, [international students] add a lot because, for a person from Allen County who hasn't been able to travel that much or hasn't been able to travel to so many countries, they have access to those countries right here on campus," Boylan said. "One of my favorite things to say is, if you've never been to Korea, you can go to Korea over lunch by talking to an international student."

[READ STORY](#)

City Utilities Website Helps Extinguish Concerns Over Seasonal Changes to Fort Wayne Water

If you've lived in town for a while, or caught any of the local news stories on the topic over the past three weeks, you probably know that the taste of Fort Wayne's water can occasionally be impacted by seasonal changes. It's a phenomenon that may be more common when melting snow quickly drains into the St. Joseph River, but this most recent occurrence that was first reported in mid-May has led some to notice a less than optimal smell and taste to water on the PFW campus too. Rest assured, the water is completely safe, and adjustments being made by City Utilities are beginning to turn the tide in its pursuit of a return to the award-winning taste Fort Wayne water is known for.

While the result of treatment adjustments can take some time to flow through the entire system, current water conditions, additional information, and recent examples of how Fort Wayne water is rated by independent sources can be viewed by [clicking here](#).

Summer Hours Reminder for Some Key Services

Mastodon Campus Store

- Monday–Thursday, 10 a.m.–4 p.m.
- Friday, 10 a.m.–3 p.m.
- Closing at 5:30 p.m. on scheduled New Student Orientation dates
- Open 10 a.m.–5:30 p.m. June 26–30

Dining

- Don's at Walb | Monday–Friday, 10:30 a.m.–1 p.m.
- Einstein Bros Bagels and Java Spot will be closed throughout the summer

Fitness Center

- Monday–Thursday | 7 a.m.–8 p.m.
- Friday | 7 a.m.–7 p.m.
- Saturday | 8 a.m.–2 p.m.
- Sunday | Noon–5 p.m.

The Pantry

- Monday, 2–4 p.m. | Student Housing Clubhouse
- Thursday, 10 a.m.–2 p.m. | Walb Union, Room G36

Mastodon Memories

This summer series explores the campus experiences of current Purdue Fort Wayne faculty and staff who are also alumni.



Adam Dirksen

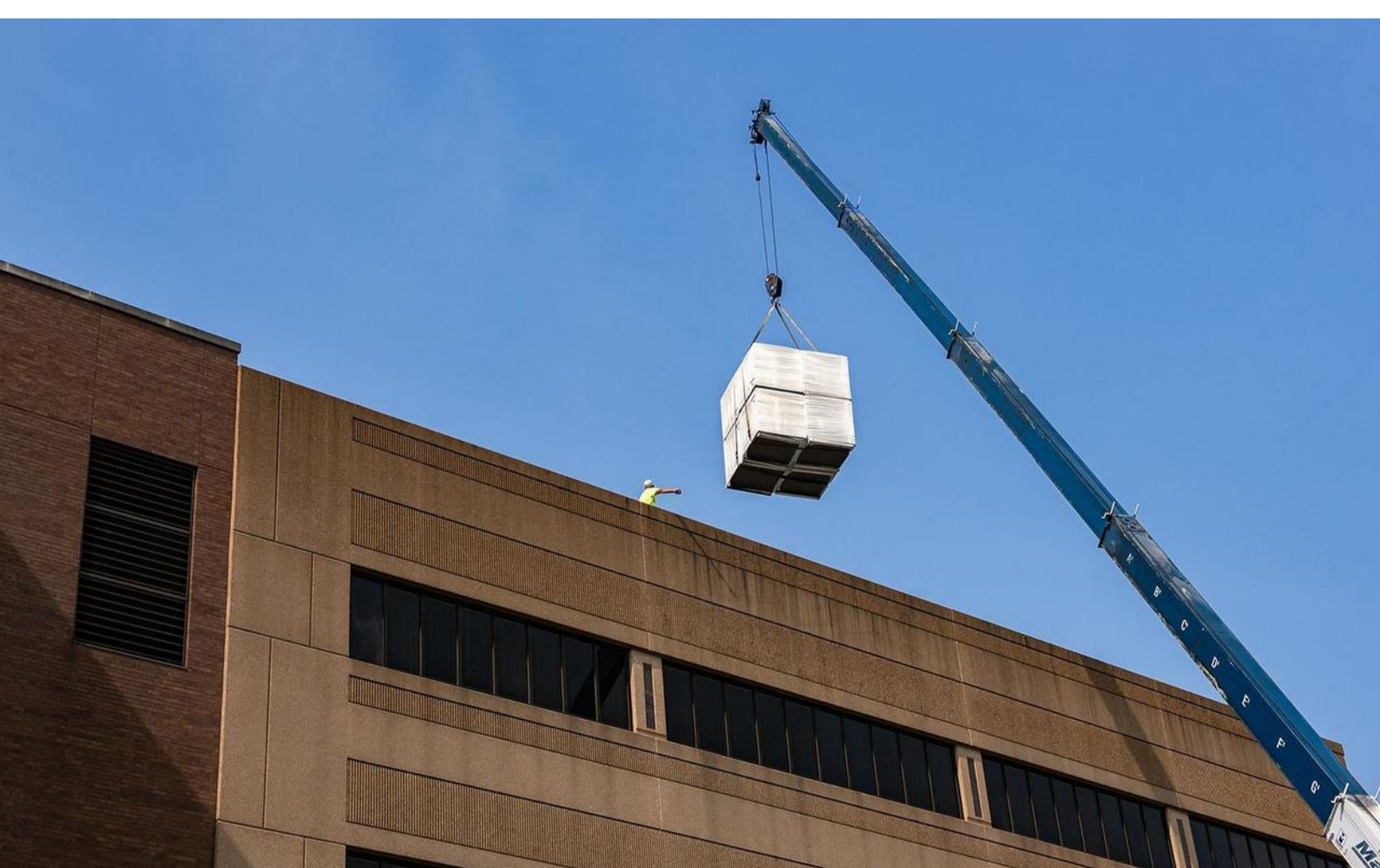
*Director of the Center for the Enhancement of Learning and Teaching
Senior Lecturer in the Department of Communication*

Adam Dirksen came to campus as an undergrad in 1996—and never left—graduating in 2000 with a degree in media and public communication and a minor in media production. He earned a master's degree in professional communication in 2002, while at the same time serving as a graduate teaching assistant and a peer advisor. Now he leads a CELT team of six who work with faculty and programs, providing teaching support and development, a position he's held for six years.

[READ STORY](#)

In a Snap

Seen and noted around campus. Monitor our university social feeds for more great moments of Mastodon life.



Summer projects are looking up. There's lots of activity around the Science Building this week as the old roof is removed and an improved version installed.

News Center



Events Calendar



Athletics



Ripples



Inside PFW is an official university communication for faculty and staff. All submissions should be sent to inside@pfw.edu no later than 2 p.m. on the day prior to the next edition to be considered for inclusion. Newsletter guidelines can be accessed in the PFW News Center by [clicking here](#).

Inside PFW is produced twice weekly on Tuesday and Thursday by the Office of Communications and Marketing. *Inside PFW Special Edition* is a supplement to the regularly scheduled newsletter. It covers breaking news and time-sensitive information directly related to university operations.

PURDUE UNIVERSITY.
FORT WAYNE

