

donlife



For Students

October 9, 2024



Nowak Loves Using NISTEM Center of Excellence to Spark Learning

Every few days, Jeff Nowak opens an email from someone asking for help, and he seems almost incapable of saying no. That's because he loves what he does, invigorating and inspiring others and himself.

Nowak, a professor of education at Purdue University Fort Wayne, is director of the Northeast Indiana Science, Technology, Engineering, and Math Education Resource Center, which he founded in 2006. NISTEM was established in partnership with several regional stakeholders. The center's mission is to encourage active engagement with science, technology, engineering, and mathematics-related activities, working with children, youth, and educators of all ages.

His work over the years has included facilitating events in schools, parks, and other area locations

such as Science Central, the Fort Wayne Children’s Zoo, the Foellinger-Freimann Botanical Conservatory, McMillen Health Education Center, Fox Island, Allen County public libraries, and the Boys & Girls Clubs of Fort Wayne. He’s set up displays in classrooms, hallways, yards, athletic fields, parking lots, living rooms, and stages. He’s also partnered with many others to host STEAM—the “A” added to the familiar STEM acronym to include the arts—festivals on campus and via outreach on wheels.

[READ MORE](#)

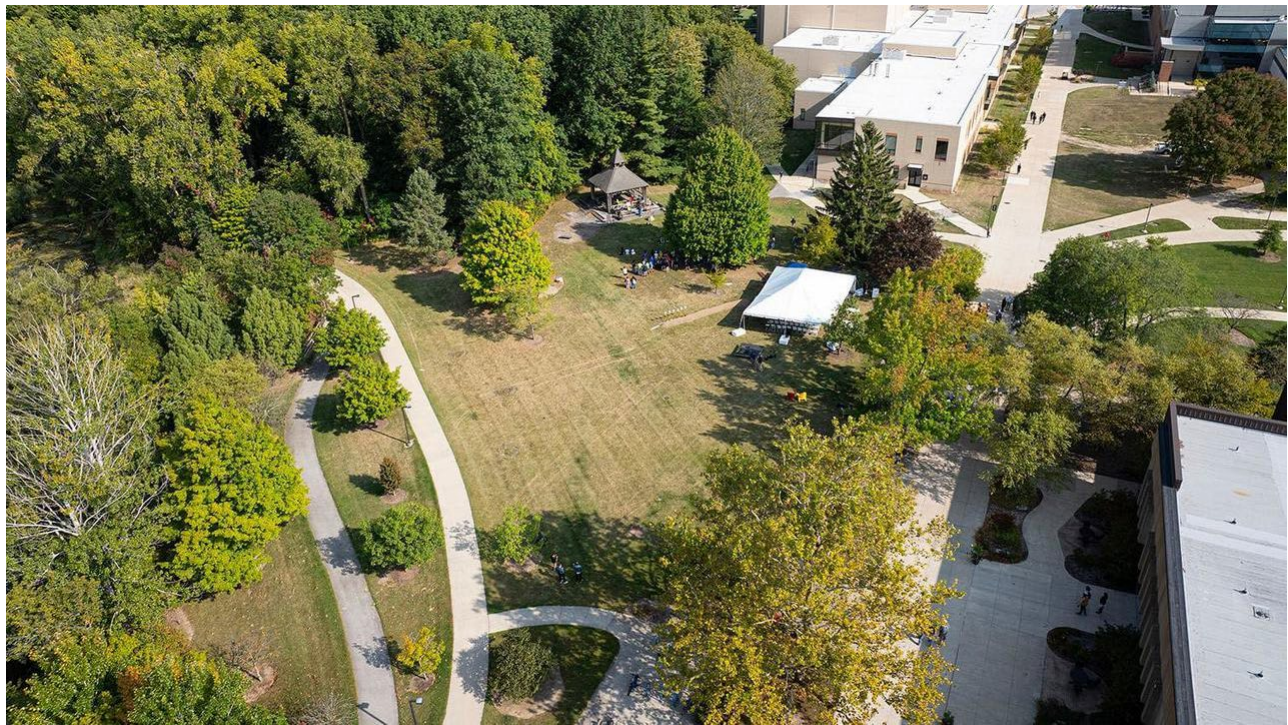


Turning Anecdotes into Art

A member of the faculty in the Department of Art and Design at Purdue University Fort Wayne since 1989, John Hrehov’s paintings and drawings are being featured in the Visual Arts Gallery until Oct. 20. The gallery is open weekdays from 8 a.m. to 9 p.m., and on weekends from 10 a.m. to 5 p.m.

In 2022, Hrehov was named the recipient of the Recharge New Surrealist Prize presented by the New York Foundation for the Arts.

[WATCH VIDEO](#)



Next Phase of Music Industry Building Construction to Start Monday

With progress comes the likelihood of a few detours. The official start of construction of the Surack–Sweetwater Music Industry Building on the north side of PFW's Main Campus is set to begin Monday. Members of the campus community and visitors who use a few of the sidewalks and trails in this area will need to begin adjusting their routes accordingly.

The first changes will include the installation of construction fencing. That will necessitate the closure of several sidewalks. [Click here](#) to view a map of the worksite and recommended detours.

Herd That

The student experience is a big part of who we are as Mastodons. Here's one of our stories.



Tabletop RPG Club Rolls the Dice With First MastodonCon

The purpose behind Purdue University Fort Wayne's Tabletop RPG Club is to play games, but its members are always finding ways to invite fellow students into their community. It revolves around having fun, but also making connections.

"It's a 'meeting people and meeting your friends' kind of deal," said Therin Coyne, senior biology major and club president. "A lot of people struggle with getting out there and meeting people. We're not forcing people to interact with each other, but we're encouraging them to at least say something. It does start with a single word, 'Like what is your favorite class? What is your favorite game system?'"

Or how about, "What is your favorite game convention?"

Tabletop RPG is throwing its dice on the board by partnering with the Department of Organizational Leadership to present the first-ever MastodonCon on Oct. 19 in the Classic Ballroom at Walb Student Union. Play starts at 8 a.m. when the building opens and continues until 10 p.m. This is a club fundraiser with tickets purchased at the door costing \$5 for members, PFW, and Indiana University Fort Wayne students, and \$20 for community members. Each ticket includes a \$5 snack voucher.

[READ MORE](#)



Gurevich Awarded Featured Faculty for Research Excellence

Naomi Gurevich, an associate professor in the Department of Communication Sciences and Disorders, was recently awarded Purdue University Fort Wayne's 2024 Featured Faculty for Research Excellence. The honor recognizes Gurevich's groundbreaking work, particularly her innovative research on phonological aspects of speech intelligibility and the development of the functional importance to intelligibility, or FITI, framework. Her contributions have significantly advanced the understanding and clinical assessment of speech disorders, particularly dysarthria, and have been instrumental in advancing speech production and perception studies.

Teaching at PFW since 2014, Gurevich's research has consistently attracted support and recognition, including grants from the Lilly Endowment and multiple PFW University Research and Innovation grants. She has also received numerous awards, such as an American Speech-Language Hearing Association innovator award, the Indiana Speech-Language Hearing Association's professional achievement award, and the Pippert Science Research Award.

Good to Know

Friday's 'Eat to the Beats' Scheduled to Coincide with National

Hispanic Heritage Month

The Multicultural Center's now semiannual "Eat to the Beats" dinner will be held on Friday from 7 to 10 p.m. in the Classic Ballroom at Walb Student Union. This year's fall date and title, "Comer Al Ritmo," which means "eat to the rhythm" in English, were selected to coincide with National Hispanic Heritage Month, Sept. 15–Oct. 15. The cuisine will be provided by La Catrina Food Truck, with dance instruction and music by Unify Ballroom Dancesport Center. Free tickets may be picked up in the Multicultural Center at Walb Student Union, Room 118. Anyone wanting to observe or even learn Latin dancing at Friday's event can do so without a ticket starting at 9 p.m.

Eventful

There's always plenty to do at Purdue Fort Wayne. To find your favorites—or discover new activities—check the full [events calendar](#) often to see what's happening on campus.

OCTOBER

9

Today., 6:30–8:30
p.m.

Friendly Financial Feud

Financial Feud plays just like Family Feud, but the questions are financial topics. Drop by to play or be in the audience! There will be food and prizes...

OCTOBER

14

Mon., noon–1 p.m.

The Study Abroad Advantage—Strategies for Résumé and Interview Success

Learn the value of including study abroad experiences on résumés, and how that might improve your professional profile. Receive guidance on how to showcase study abroad experiences by emphasizing the language skills, cultural insights, and important lessons you learned while overseas...

OCTOBER

16

Wed., 7–9 p.m.

Student Life Bingo Night

Don't be late for Bingo Night! Only the first 200 get cards/seats, and people usually have to be turned away...

Mastodon Moments

Seen and noted around campus. Monitor our university social feeds for more great moments of Mastodon life.



The Chancellor's Chili Fest on Tuesday featured a photo booth with fun props, including a giant inflatable chili pepper. The popular annual event took place in the International Ballroom at Walb Student Union, where attendees could choose from three kinds of chili and listen to live bluegrass and country music.

[Athletics](#)



[Events Calendar](#)



[News Center](#)



[Don Life Archive](#)



Don Life is an official university communication sent weekly on Wednesday to all currently enrolled students. Don Life Special Edition is a supplement to the regularly scheduled newsletter. It covers breaking news and time-sensitive information directly related to university operations.

PURDUE UNIVERSITY
FORT WAYNE

