

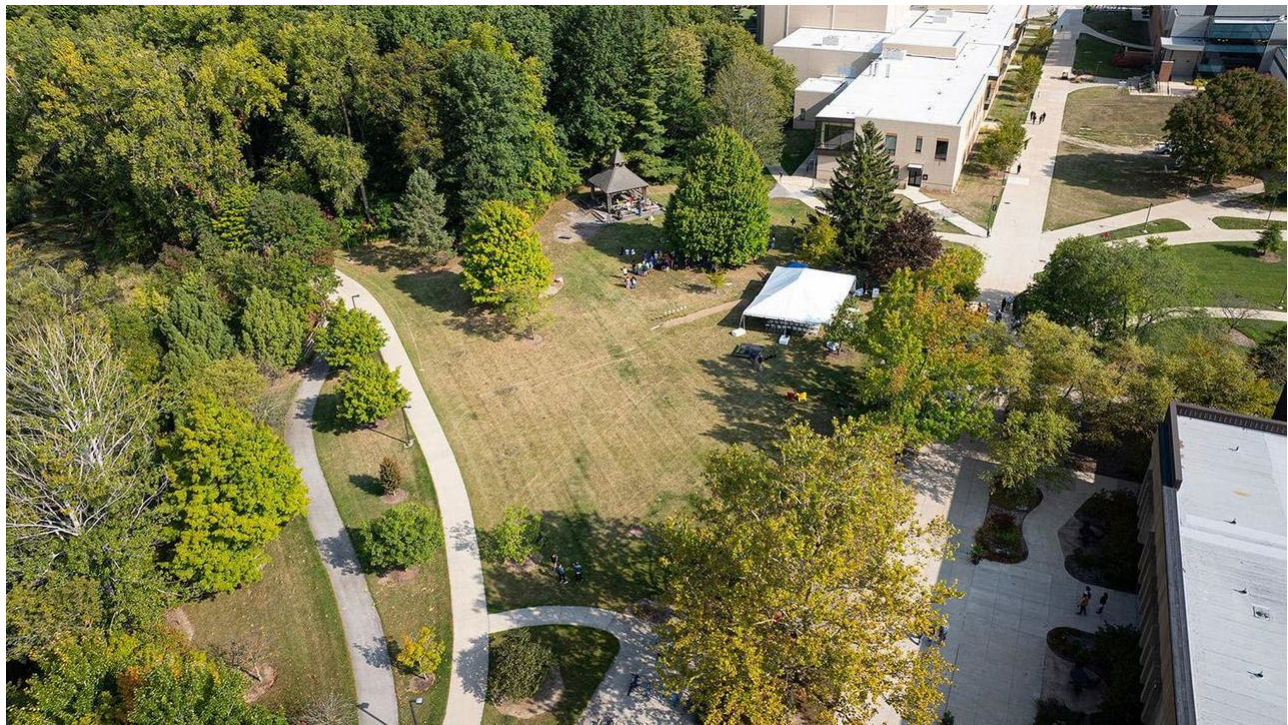


Turning Anecdotes into Art

A member of the faculty in the Department of Art and Design at Purdue University Fort Wayne since 1989, John Hrehov's paintings and drawings are being featured in the **Visual Arts Gallery** until Oct. 20. The gallery is open weekdays from 8 a.m. to 9 p.m., and on weekends from 10 a.m. to 5 p.m.

In 2022, Hrehov was named the recipient of the Recharge New Surrealist Prize presented by the New York Foundation for the Arts.

[WATCH VIDEO](#)



Next Phase of Music Industry Building Construction to Start Monday

With progress comes the likelihood of a few detours. The official start of construction of the Surack–Sweetwater Music Industry Building on the north side of PFW's Main Campus is set to begin Monday. Members of the campus community and visitors who use a few of the sidewalks and trails in this area will need to begin adjusting their routes accordingly.

The first changes will include the installation of construction fencing. That will necessitate the closure of several sidewalks. [Click here](#) to view a map of the worksite and recommended detours.



Gurevich Awarded Featured Faculty for Research Excellence

Naomi Gurevich, an associate professor in the Department of Communication Sciences and Disorders, was recently awarded Purdue University Fort Wayne's 2024 Featured Faculty for Research Excellence. The honor recognizes Gurevich's groundbreaking work, particularly her innovative research on phonological aspects of speech intelligibility and the development of the functional importance to intelligibility, or FITI, framework. Her contributions have significantly advanced the understanding and clinical assessment of speech disorders, particularly dysarthria, and have been instrumental in advancing speech production and perception studies.

Teaching at PFW since 2014, Gurevich's research has consistently attracted support and recognition, including grants from the Lilly Endowment and multiple PFW University Research and Innovation grants. She has also received numerous awards, such as an American Speech-Language Hearing Association innovator award, the Indiana Speech-Language Hearing Association's professional achievement award, and the Pippert Science Research Award.

How We Work

How much do you really know about Purdue Fort Wayne? The "How We Work" series explores some of the untold stories about the university's daily operations, its support for students and employees, its engagement in the community, and its various achievements.



Nowak Loves Using NISTEM Center of Excellence to Spark Learning

Every few days, Jeff Nowak opens an email from someone asking for help, and he seems almost incapable of saying no. That's because he loves what he does, invigorating and inspiring others and himself.

Nowak, a professor of education at Purdue University Fort Wayne, is director of the Northeast Indiana Science, Technology, Engineering, and Math Education Resource Center, which he founded in 2006. NISTEM was established in partnership with several regional stakeholders. The center's mission is to encourage active engagement with science, technology, engineering, and mathematics-related activities, working with children, youth, and educators of all ages.

His work over the years has included facilitating events in schools, parks, and other area locations such as Science Central, the Fort Wayne Children's Zoo, the Foellinger-Freimann Botanical Conservatory, McMillen Health Education Center, Fox Island, Allen County public libraries, and the Boys & Girls Clubs of Fort Wayne. He's set up displays in classrooms, hallways, yards, athletic fields, parking lots, living rooms, and stages. He's also partnered with many others to host STEAM—the "A" added to the familiar STEM acronym to include the arts—festivals on campus and via outreach on wheels.

[READ MORE](#)

Good to Know

Friday's 'Eat to the Beats' Scheduled to Coincide with National Hispanic Heritage Month

The Multicultural Center's now semiannual "Eat to the Beats" dinner will be held on Friday from 7 to 10 p.m. in the Classic Ballroom at Walb Student Union. This year's fall date and title, "Comer Al Ritmo," which means "eat to the rhythm" in English, were selected to coincide with National Hispanic Heritage Month, Sept. 15–Oct. 15. The cuisine will be provided by La Catrina Food Truck, with dance instruction and music by Unify Ballroom Dancesport Center. Free tickets may be picked up in the Multicultural Center at Walb Student Union, Room 118. Anyone wanting to observe or even learn Latin dancing at Friday's event can do so without a ticket starting at 9 p.m.

2025 Open Enrollment Is Oct. 29–Nov. 12; Info Sessions Scheduled

As announced in an email sent by Human Resources on Thursday, Purdue's **Benefits Enrollment** website is a valuable resource for information. Presentations in Kettler Hall, Room 148, will be held today at 11 a.m.; Oct. 16 at 3 p.m.; and Oct. 21 at noon. An online session will be offered Oct. 18 at 3 p.m., via **Zoom**. One-on-one sessions are also available virtually and in-person by appointment with Amy Jagger, benefits director, or Tiffany Davis, HR generalist. **Click here** to schedule with Jagger, or email **davis444@pfw.edu**.

Eventful

There's always plenty to do at Purdue Fort Wayne. To find your favorites—or discover new activities—check the full [events calendar](#) often to see what's happening on campus.

OCTOBER

9

Wed., 7:30–9:30 p.m.

The Beatles Meet Big Band Jazz: A Musical Fusion

Join the Jazz Ensemble for an evening where the timeless tunes of the Beatles meet the exhilarating sounds of big band jazz. The performance will blend these two iconic genres into a vibrant and captivating musical experience...

OCTOBER

10

Thurs., noon–1:30
p.m.

SAPP: No More! Stand up Against DV

Domestic violence is a pervasive issue that affects people of all genders, races, and socioeconomic backgrounds. It can take many forms, including physical abuse, emotional manipulation, financial control, and psychological intimidation. Hear from speakers and student leaders on how we can all stand against DV...

OCTOBER

10

Thurs., 7:30–9:30
p.m.

Bands and Choral Ensemble Concert

Ten-time Emmy Award-winning composer Bruce Broughton will join the Symphonic Wind Ensemble and choral ensemble as they perform the world premiere of his monumental work for wind ensemble and choir, "The Two Sermons." The other ensembles performing include the University Singers and Choral Union...

On the Job

Check out the new faces in new places.

New Hires

- Scotty Meeks, custodian | Building Services

In a Snap

Seen and noted around campus. Monitor our university social feeds for more great moments of Mastodon life.



Paula Ashe, program assistant for the Multicultural Center, talks to a prospective student during Sunday's Fall Campus Visit Day.

News Center



Inside PFW Archive



Athletics



Ripples



Inside PFW is an official university communication for faculty and staff. All submissions should be sent to inside@pfw.edu no later than 2 p.m. on the day prior to the next edition to be considered for inclusion. Newsletter guidelines can be accessed in the PFW **News Center**.

Inside PFW is produced twice weekly on Tuesday and Thursday by the Office of Communications and Marketing. *Inside PFW Special Edition* is a supplement to the regularly scheduled newsletter. It covers breaking news and time-sensitive information directly related to university operations.

PURDUE UNIVERSITY
FORT WAYNE



